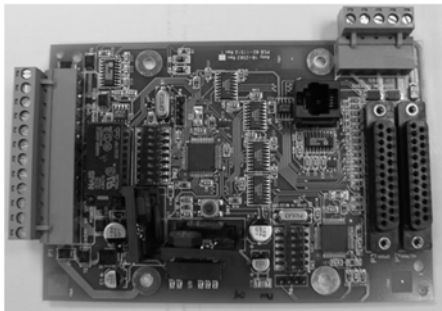


MULTI-INTERFACE MODULE (MIM)



The Fike MIM (P/N 10-2583) is used with a Cheetah® Xi or CyberCat® control panel to facilitate any one of the following interface functions:

- Interface between the Cheetah Xi and CyberCat panels and Precise Vision PC (MIM firmware V4.0 or higher). As system events occur, they are routed to the Precise Vision PC and are annunciated on the display. The MIM allows panel command and control functions (i.e., Reset, Silence, Acknowledge, and Drill) to be initiated from the Precise Vision PC.
 - Connection of a serial (Keltron 90 series) or parallel (IEEE 1284 standard) printer to a Cheetah Xi or CyberCat panel. Facilitates printing of real-time logs of system events and event histories. For applications that require a UL listing, the Keltron printer must be used.
 - Gateway interface between Cheetah Xi and CyberCat panels to Cheetah classic panels. This connection facilitates Cheetah classic network communication of system event/state information for zones 1-100 across the gateway (bi-directional). Allows command and control functions (i.e., Reset, Silence, Acknowledge, and Drill) to be shared between panels.
- NOTE:** Gateway operation is not available with panel firmware V7.00 or higher or MIM firmware V4.40 or higher.
- Fieldserver interface between networked Cheetah Xi and CyberCat panels to building management systems. Fieldserver converts Fike protocol to various building management protocols. This connection has no listings or approvals.

The MIM can interface to a parallel printer and provide gateway interface functions at the same time. All other connection options are standalone use only.

The MIM can be mounted within the control panel enclosure onto the standoffs provided for the supplemental power supply transformer (if unused) or it can be externally mounted in a custom MIM enclosure. See Ordering Options.



MIM Assembly, P/N 10-069

Approvals

Underwriters Laboratories (UL)
 Factory Mutual (FM)
 California State Fire Marshal (CSFM)
 New York Certificate of Approval (COA)

For exact certification listings, please reference the respective agency web site.

Specifications

Operating Voltage	24 VDC regulated ¹
MIM Current	200 mA (standby and alarm)
Keltron Printer Current	60 mA (standby) 1 A (during printing)
Operating Temp	32°F to 120°F (0°C to 49°C)
Relative Humidity	93%, non-condensing
Panel Connection	- RS-485 peripheral bus circuit - Max 4,000 ft. (1219 m) - Power-limited and supervised - 100Ω termination resistor if last device on circuit.
Printer Connection	DB-25 Cable
Precise Vision or Field Server Connection	- RS-232 Connection (RJ11) - Non-supervised and power-limited

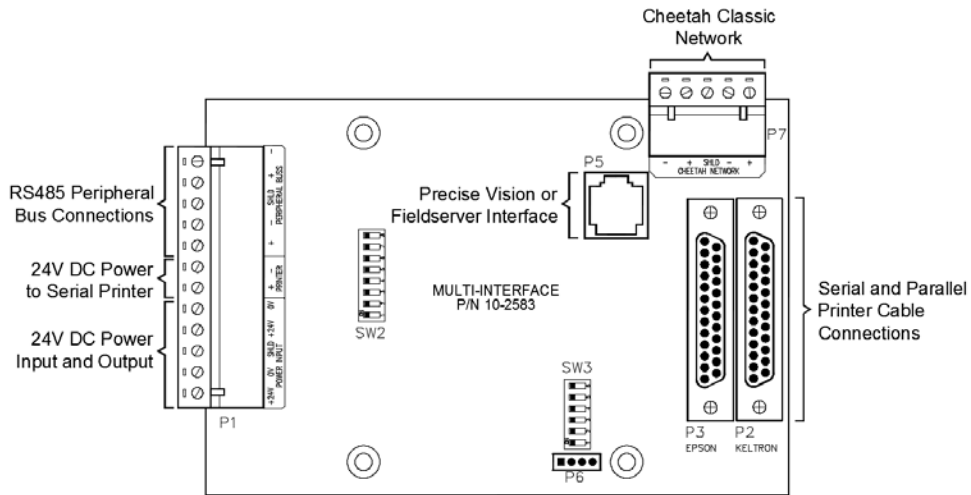
¹Power provided by host control panel or battery backed remote power supply listed for fire protective signaling use. Remote power supply must be capable of being disconnected from earth ground allowing the Fike panel to perform ground fault detection for the MIM; otherwise a ground fault may occur on the Fike panel.

This document is only intended to be a guideline and is not applicable to all situations. Information is subject to Fike's full disclaimer at <http://www.fike.com/disclaimer>.

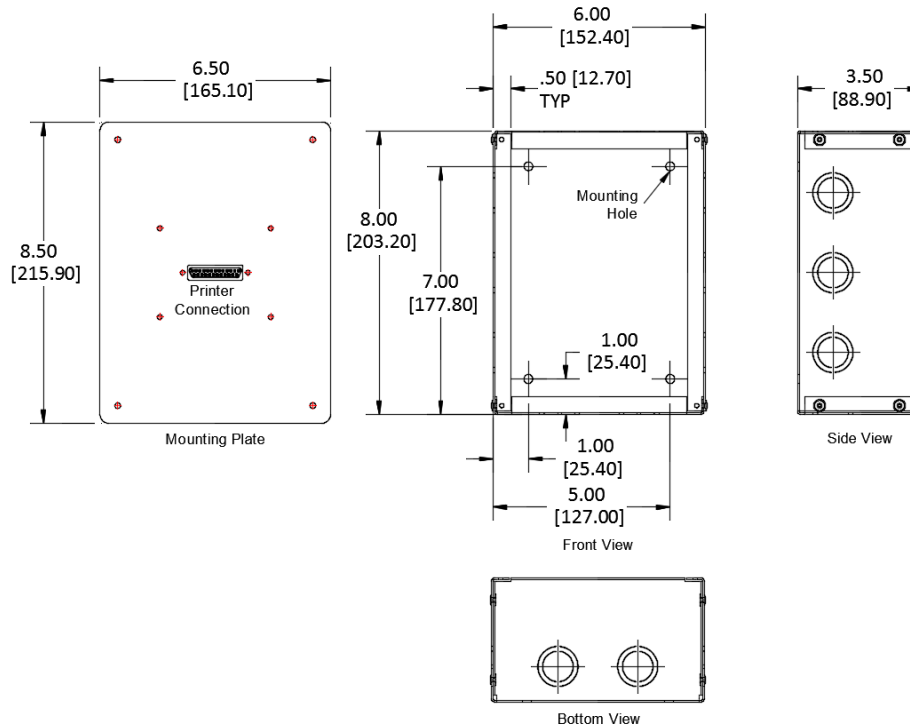
Ordering Options

Part Number	Description
10-069	Multi-Interface Module (MIM) assembly, includes enclosure
10-2583	Multi-Interface Module (MIM), included in 10-069
10-2616	Keltron 90 Series (VS4095/5) Serial Printer, UL listed
10-2617	Red Keltron Printer Enclosure (VS ENCREG)
10-2618	Gray Keltron Printer Enclosure (VS ENCGRY)
FX-890ii	Epson FX-890ii Parallel Printer
10-1874A	Serial Communication Cable, 14 ft. (4.28 m) long

MIM Terminal Assignments



MIM Enclosure Dimensions (inches[mm])



This document is only intended to be a guideline and is not applicable to all situations. Information is subject to Fike's full disclaimer at <http://www.fike.com/disclaimer>.