

PRECISE VISION® - GRAPHIC FIRE SYSTEM MONITORING SOFTWARE



Precise Vision is a licensed, windows-based event management software package that can be downloaded for free and installed on most Windows-based laptops and PCs. Once licensed the software can be used to create a graphical workstation capable of displaying system events generated by Fike's CyberCat® Fire Alarm control panels. The software allows the operator to view and manage multiple, local device networks and remote sites on one or more monitoring computers.

Features

- See alarm information in real time, color-coded by status – Trouble, Supervisory, or Alarm.
- Pinpoint alarms on maps and floor plans.
- See instant “Take Action” instructions.
- Zoom in and out of maps and floor plans with focus on devices.
- Touch screen options available.
- Automatic e-mail notification option.
- Hear audible warnings and alerts, and use Precise Vision for mass notification.
- Network your Precise Vision system and log in wherever you are.
- Include data from any device that has an RS-232 port.
- Field configurable.
- Air Sampling interface option.

- Print full reports and records.
- Use the Windows-based laptops, PCs, and touch screen devices of your choice.
- Command/Control features (UL version only)

Basic System Requirements

Precise Vision is easy to install and run on most readily available PCs, laptops, flat-panels, and touch screen computers.

If you would like to know if Precise Vision will work with a computer you already own, use this checklist to base system requirements:

- Windows-based PCs and Laptops (Pentium 4 recommended)
- RS232/RS485 or TCP/IP connection – one for each control panel or network interface port
- 1 GB hard drive
- Sound card with speakers (optional)
- 19-inch monitor or larger recommended (touch screen optional)
- XGA or WXGA video card
- Microsoft Windows Professional 7, 8.1, 10 or Microsoft Server 2003 or 2008
- Minimum 4 GB RAM
- Mouse, touch screen, or other pointer device
- Rewritable CD-RW drive or Portable USB thumb drive to transfer and store files

For best results, include:

- Internet access
- Email server information
- A serial server to connect the RS232 port to Ethernet
- Architect's CAD drawings or custom digital images for maps, floor plans, and background images

Approvals

Underwriters Laboratories (UL)

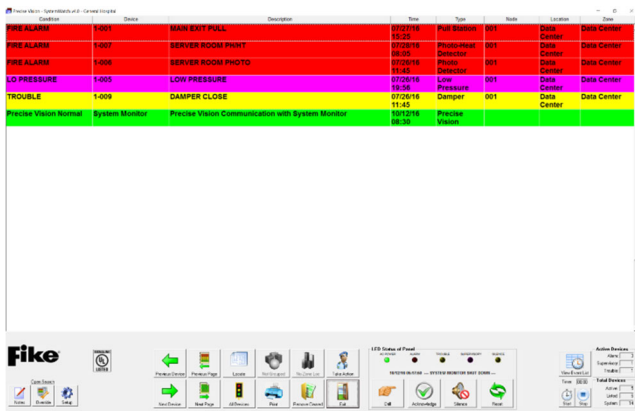
This document is only intended to be a guideline and is not applicable to all situations. Information is subject to Fike's full disclaimer at <http://www.fike.com/disclaimer>.

User Interface

Precise Visions intuitive graphical user interface displays real-time information about each system event on color coded lists and with just a few clicks, the user can pinpoint the location of the event on maps and floor plans and view device and event details. This enables facility managers and emergency personnel to quickly assess and react to alarm, supervisory, and trouble situations initiated by the system.

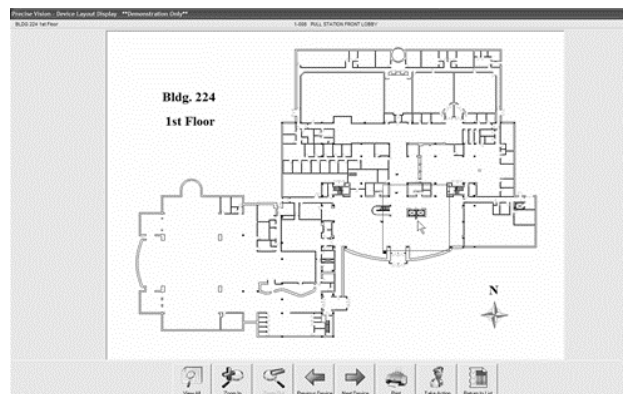
Command and Control

An Underwriters Laboratories (UL) listed version of Precise Vision is available that enables command and control functions for Fike CyberCat panels and Air Sampling devices to be initiated by the software. The software must be installed on a Fike UL listed touch screen computer and a Fike Multi-Interface Module (MIM) must be used to interface between the Precise Vision PC and the Fike panel.

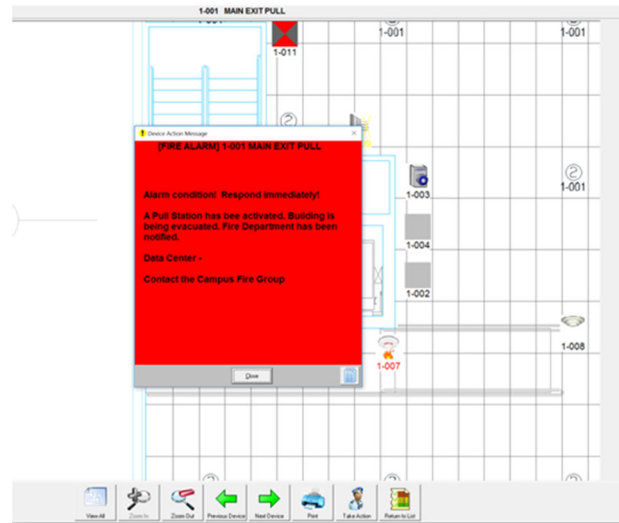


Event	Date	Description	Time	Type	Node	Location
FIRE ALARM	1-001	MAIN EXIT PULL	07:27:16	Pull Station	001	Data Center
FIRE ALARM	1-007	SERVER ROOM PHOTO	07:28:16	Photo-head	001	Data Center
FIRE ALARM	1-008	SERVER ROOM PHOTO	08:28:16	Photo-head	001	Data Center
LD PRESSURE	1-005	LOW PRESSURE	07:26:16	Low Pressure	001	Data Center
TROUBLE	1-009	DAMPER CLOSE	07:26:16	Damper	001	Data Center
Precise Vision Monitor	System Monitor	Precise Vision Communication with System Monitor	07:12:16	Precise Vision	001	Data Center

System Watch Screen (non UL)



Floor Plan Screen



Take Action Message

Connection Methods

Direct Connection – The Precise Vision monitoring computer is connected directly to the host control panels RS485 peripheral bus. If monitoring computer is not equipped with an RS485 port, an RS485 to USB converter must be installed. With this method, the software can only be used for monitoring purposes only.

Ethernet Connection - The facilities existing Ethernet LAN/WAN network or a private LAN just for fire panel use can be used to provide the necessary communication path between the host control panel and the Precise Vision monitoring computer(s). This way of connecting easily facilitates host control panel monitoring from multiple Precise Vision computers located throughout the facility, but is not UL listed.

Multi-Interface Module Connection – A MIM Assembly (P/N 10-2583) is used to connect each Precise Vision computer to the host control panel's RS485 peripheral bus. Each monitoring computer that is running the full UL Precise Vision software package must have its own MIM to properly communicate system events. This connection method allows UL-listed command-and-control functions to be initiated from the monitoring computer(s).

Refer to the Precise Vision Application Guide, P/N 06-536 for additional details.

This document is only intended to be a guideline and is not applicable to all situations. Information is subject to Fike's full disclaimer at <http://www.fike.com/disclaimer>.

Ordering Information

Fike P/N	Description
Software (Non-UL Listed)	
06-459 ^[1]	Package D, Precise Vision Management Software, CyberCat Panels, Max of 1016 Points (Monitoring Capability Only. No Command & Control Functionality)
06-459-R ^[1]	Package D, Remote User Precise Vision Management Software, CyberCat Panels, Max of 1016 Points (Monitoring Capability Only. No Command & Control Functionality)
06-460 ^[1]	Package E, Precise Vision Management Software, CyberCat Panels, Max of 3048 Points (Monitoring Capability Only. No Command & Control Functionality)
06-460-R ^[1]	Package E, Remote User Precise Vision Management Software, CyberCat Panels, Max of 3048 Points (Monitoring Capability Only. No Command & Control Functionality)
06-461 ^[1]	Package F, Precise Vision Management Software, CyberCat Panels, Max of 130,047 Points (Monitoring Capability Only. No Command & Control Functionality)
06-461-R ^[1]	Package F, Remote User Precise Vision Management Software, CyberCat Panels, Max of 130,047 Points (Monitoring Capability Only. No Command & Control Functionality)
Software (UL Listed Command/Control Functionality)^[2]	
06-456 ^[1]	Package A, Precise Vision Management Software, CyberCat Panels, Max of 1016 Points (UL Listed Command/Control Functionality)
06-457 ^[1]	Package B, Precise Vision Management Software, CyberCat Panels, Max of 3048 Points (UL Listed Command/Control Functionality)
06-458 ^[1]	Package C, Precise Vision Management Software, CyberCat Panels, Max of 130,048 Points (UL Listed Command/Control Functionality)
Software Add-Ons	
06-510	Precise Vision Email Capability
06-834	Precise Vision Aspirator Program (UL Listed Command/Control Functionality) ^[2]
06-888	Precise Vision Software Upgrade to Current Version
06-509 ^[3]	Fike Configuration of Precise Software (priced per floor)
Hardware	
02-14223	Touchscreen ALL-IN-ONE Computer includes: 21.5" LCD, i5 2.4Ghz, 4 GB of RAM, 500 GB SATA hard drive, Windows 7 Pro, 32 Bit, Wall Mount Unit
02-14224	Touchscreen ALL-IN-ONE Computer includes: 42" LCD, i5 2.4Ghz, 4 GB of RAM, 500 GB SATA hard drive, Windows 7 Pro 32 Bit (does not include wall mount bracket)
02-12553	Industrial, UL 864 Recognized Desktop Computer includes: Chassis, Mini-itx motherboard, i5 2.4Ghz, 24 VDC, fan, (2) RS-232 serial ports, 2 gigabit Ethernet port, audio port, 7 USB ports, video port, keyboard and mouse ports, 4 GB of system RAM, 500 GB SATA hard drive, Microsoft 7 Professional 32 Bit.
02-14287	COMARK Power Brick for 02-12553 Industrial PC
02-14366	Dual Quad Core, Xeon System, UL 864/ULC-S527-11/UL 2572 Recognized, Rack Mount
02-14232	TEK 420T ALL-IN-ONE Computer, 42" Touchscreen LCD (non UL)
WLM1013	MSA Universal Wall Mount for TEK Computers (non UL)

^[1]Precise Vision Pricing for CyberCat is based on a maximum number of points.

^[2]Where UL Listing is required, a UL Listed PC and MIM must be used.

^[3]Customer must provide CAD drawings of building floor plans and C-Linx panel configuration to Fike for configuration of Precise Vision.

This document is only intended to be a guideline and is not applicable to all situations. Information is subject to Fike's full disclaimer at <http://www.fike.com/disclaimer>.

Ordering Information

Accessories	
02-14256	LCD, 19" Widescreen, 1366x768 Desktop Display (no touchscreen)
02-14257	LCD, 19" Widescreen, 1366x768 Desktop Display (touchscreen)
02-14258	LCD, 22" Widescreen, 1920x1080 Desktop LED Backlit Display (no touchscreen)
02-14259	LCD, 22" Widescreen, 1920x1080 Desktop LED Backlit Display (touchscreen)
13-0190	RS-485 to USB Converter, U-Linx USOPTL4 (<i>control panel direct to computer</i>)
10-2583	Multi-Interface Module (<i>required with UL command/control systems</i>)
10-069	Multi-Interface Module with Enclosure (<i>required with UL command/control systems</i>)
02-15314	MOXA®, NPORT Server 5100A
DK35A	MOXA®, DIN Rail Mounting Clips
02-15315	MOXA®, DB9 Mini Female to Terminal Block Adapter

This document is only intended to be a guideline and is not applicable to all situations.
Information is subject to Fike's full disclaimer at <http://www.fike.com/disclaimer>.
