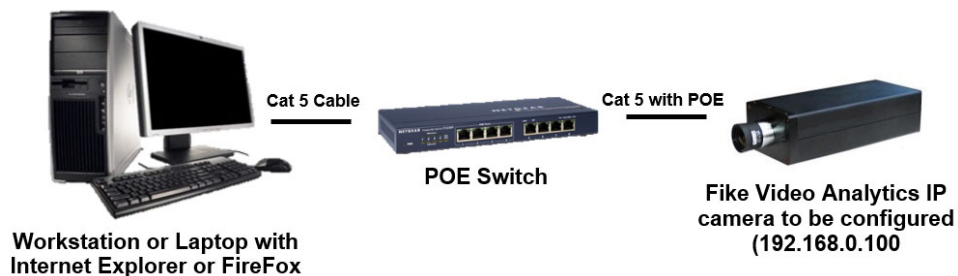


Connecting to a FVA-IP Camera

Step 1 – Ensure the connection to the fire alarm control panel (FACP) has been disabled while the camera is being replaced and reconfigured. Whenever work is done on a camera or within 2-3 meters of a camera, the camera should be detached from the FACP to prevent false alarms.

Step 2 –To access the cameras web interface, a small system will be set up with a laptop and the camera connected to a network switch with Cat5 cable. The camera can be powered with Power over Ethernet (PoE) using a PoE switch, or with 12 or 24 VDC on the rear of the camera.



Step 3- Once a laptop, the camera, and switch are connected and powered, the user can access the web interface with an internet browser such as Internet Explorer or Firefox by typing <http://192.168.0.100/admin> in the address bar. **192.168.0.100** is the default address of the camera. If the camera IP address has been changed, you will need to use the new IP address. You will be prompted for a user name (admin) and password (axonx), see Fig 1.

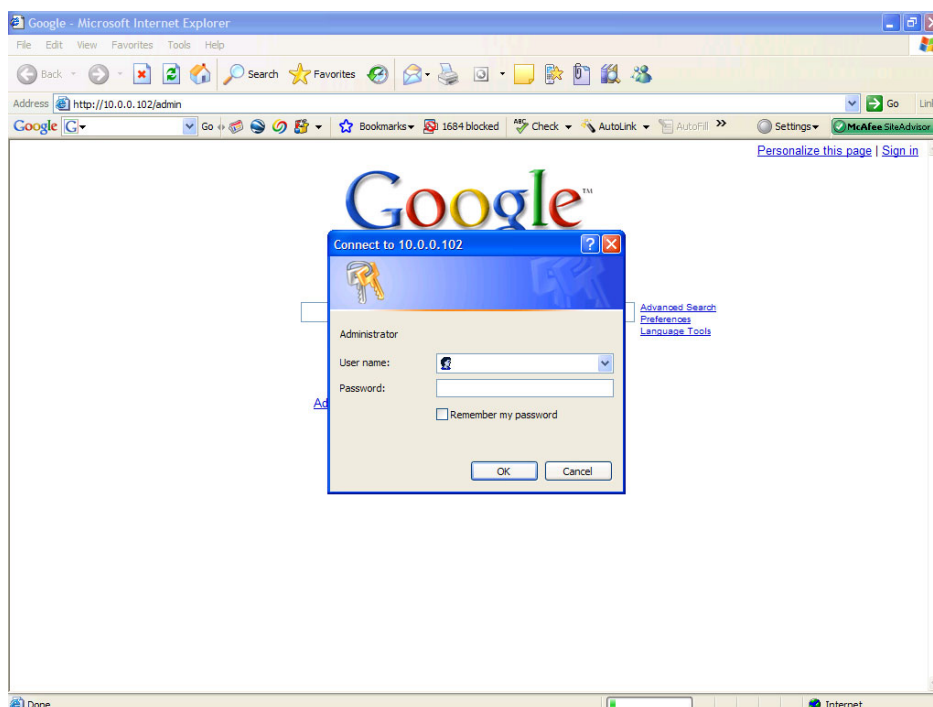


Fig 1 – User name and Password Screen

Step 4 - Once you have entered in the user name and password, the Administration Home page will appear, Figure 2. You are now connected to the IP camera and configuration of the settings can start. The page is broken into two sections: one for an operator and the other for the administrator. Although the operator features are present, it is suggested that all monitoring by the operator be done using the Fike Video Analytics video management software. Both sections, administrator and operator, are secured from the other by a user name and password. The factory default user name and password for each section is:

Operator section: User Name: operator
 Password: axonx

Administrator section: User Name: admin
 Password: axonx

These passwords can be changed by the administrator in the administration section under **configure>access control**.

You've now successfully connected to the camera; please refer to the Fike Video Analytics IP Camera Manual P/N 06-523 for more detail on changing settings.



Fig 2 – Administration Home page

For further assistance please call Fike Video Analytics Corporation technical support at (844-345-3843).