



FIKE SINGLE LOOP ADDRESSABLE FIRE ALARM SYSTEM

CIE-A-200

The CIE-A-200 intelligent fire alarm system offers both a cost-effective and reliable solution for a wide variety of fire detection applications. The innovative technology built into the CIE-A-200 panel is designed to significantly reduce false alarms.



The Reliable Fire Protection System You Can Count On

The CIE-A-200 system is an analogue addressable system, but with the processing power distributed across the entire system. This dramatically reduces the complexity of the control panel and the data traffic, and improves the efficiency of the system.

The system addressing is carried out automatically upon initialisation from the control panel, and does not need to be programmed manually at each device.

Each device has a built in isolator. When the loop is initialising, the panel addresses each device on the loop starting with the first device connected to Loop End 1. When the first device has been addressed it will close its isolator and allow the second device to be addressed. This process will carry on and finish with the last device connected to Loop End 2. When the last device is addressed and closes its isolator, power is applied to Loop End 2, the panel detects this and reports Loop Complete.

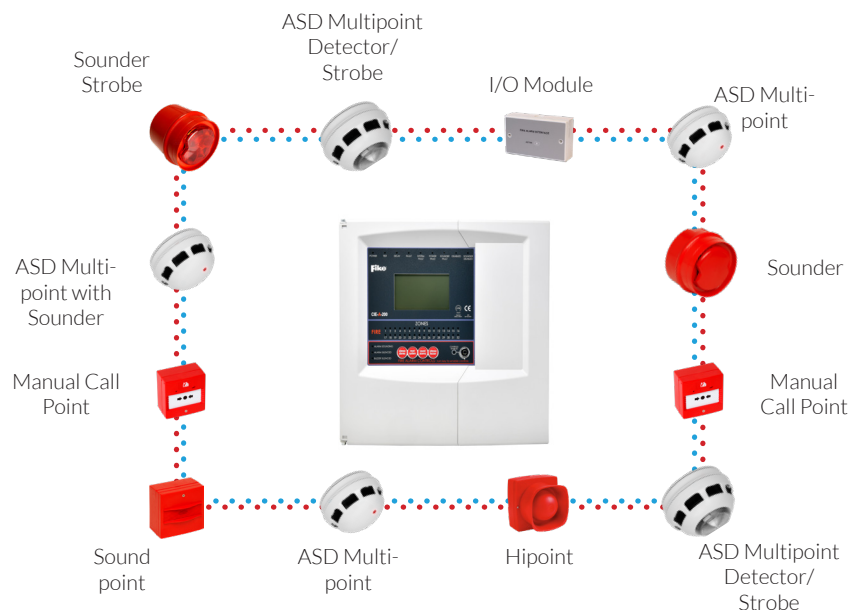


Applications

- Schools
- Nursing Homes
- Bed & Breakfasts
- Museums
- Apartments / Flats
- Restaurants
- Retail Stores
- Office Buildings

Features

- Loop length up to 2km long
- Loop capacity up to 200 devices
- 32 Fire Zones and 32 I/O Zones
- Alarm confirmation verification feature
- 1000 event history buffer
- Soft addressing
- 2 Monitored Inputs
- 2 Monitored Outputs
- 3 Relays
- Up to 8 repeaters
- 7Ah Max battery capacity (or 12 Ah with separate enclosure)

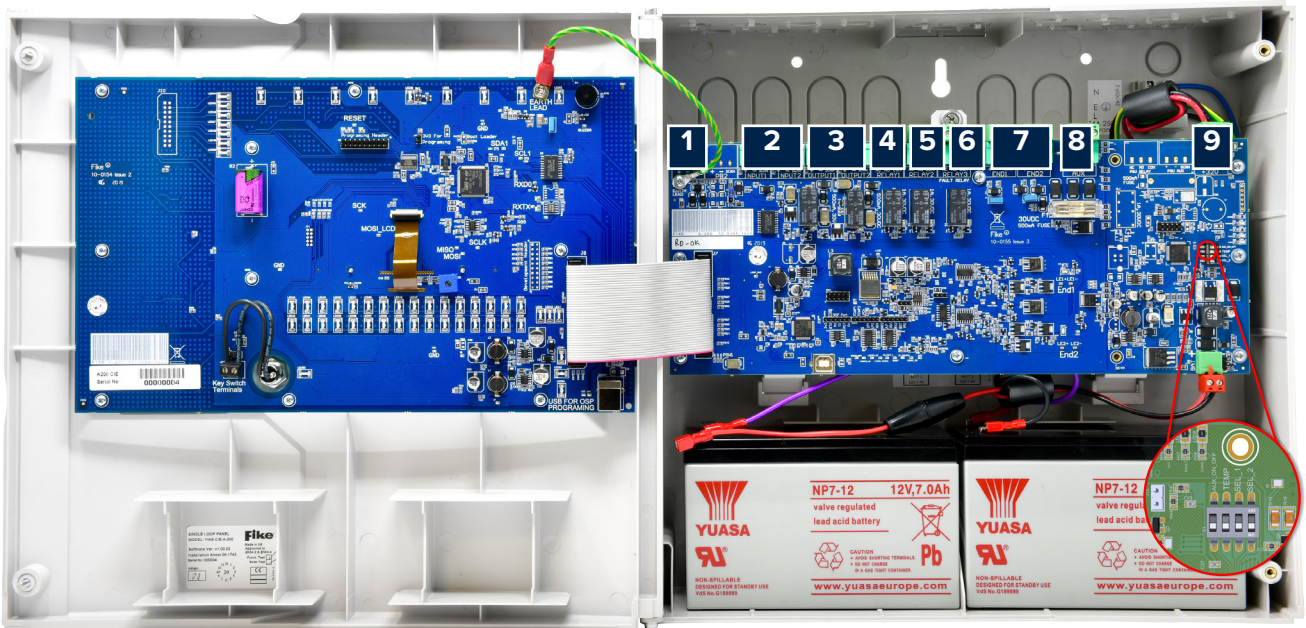


LOOK INSIDE



Panel connections from left to right:

- | | | | |
|-----------------|---|---------------|---|
| 1 = PB_1&2 | Peripheral bus 1 for repeater connection | 6 = RELAY_3 | Fault output general panel fault |
| 2 = MON_IN 1&2 | 2 x monitored inputs (can be configured) | 7 = END_1 &2 | Loop In and Loop Out |
| 3 = MON_OUT 1&2 | 2 x monitored outputs (can be configured) | 8 = AUX_OUT | Auxiliary power output, 30V DC 450mA |
| 4 = RELAY_1 | Fire output Relay 1 (can be configured) | 9 = 32V_INPUT | Main power input from internal power supply |
| 5 = RELAY_2 | Fire output Relay 2 (can be configured) | | |



7 or 12Ah Batteries

2 x 12V 7Ah housed in the bottom part of the back box or 2 x 12V 12Ah housed in an external battery box, (battery box sold separately)

Training

The OSP software is licensed.

Only available on the successful completion of the CIE-A-200 training course, please contact:

FST.Training@Fike.com
Tel: +44 (0) 1633 865 558

This document is not to be used for installation purposes and is subject to Fike's full disclaimer at fike.com/disclaimer. Fike reserves the right to change product designs or specifications without obligation and without further notice.

PANELS AND ACCESSORIES



520-0001

CIE-A-200 Single Loop Addressable Panel

A single loop addressable panel capable of supporting up to 200* devices with a maximum loop length of 2km. Requires 2 x 7Ah 12V Sealed Lead Acid batteries (2 x 12Ah with extended battery box). *Please use DLU calculation sheet for loop loading.*



520-0010

CIE-A-200 Repeater Panel

Repeater panel with inbuilt PSU, requires mains supply and batteries – connects to the CIE-A-200 single loop panel. Requires 2 x 12V 12Ah sealed lead acid batteries.



23-0239

CIE-A-200 Panel Surround

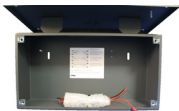
To allow flush mounting of CIE-A-200 panel.



23-0253

Duonet to CIE-A-200 Panel Surround

To allow flush mounting of CIE-A-200 pane after removing Duonet/Quadnet panel.



550-0020

CIE-A-200 Battery Box

Holds 2 x 12V 12Ah batteries allowing for additional standby capacity of up to 72 hrs.



803-0006

Sita Loop I/O Module

Addressable multifunction auxiliary I/O unit mounted within a standard double gang box. Relay output to provide shutdown facilities with 230V AC 3A rated DPCO relay contacts and monitored input facility. Connects to the addressable loop.



803-0010

Sita Conventional Zone Module

Addressable conventional zone module mounted within a standard double gang box. Provides the facility to connect 1 zone of conventional resistance monitored devices to the addressable system, up to a maximum of 20mA. EOL capacitors included. Connects to the addressable loop.



803-0022

Sita Loop Control Module

Addressable monitored output unit mounted with a standard double gang box. Provides a single 24vdc monitored output suitable for the control of conventional sounders and visual alarm devices. Connects to the addressable loop. Requires a 24vdc EN54 PSU.



803-0005

Sita Multipoint / ASD I/O Interface Boxed

Multifunction auxiliary I/O unit mounted within a single gang box for local use at the detector. Relay output to provide shutdown facilities with 30V DC 0.5A rated SPCO relay contacts and monitored input facility. Connects to the Multipoint ASD Detector.



600-0092

Remote LED

A multifunction LED for connection to most common detectors. Includes inbuilt 10K resistor suitable for the Addressable Multipoint ASD Detector. Requires single gang back box.



Sita Multipoint ASD Detector

Using the Sita Multipoint ASD as part of the CIE-A-200 system means that when a detector is wired to the system, a sounder and strobe can also be connected without extra installation time or cost. This greatly reduces the number of points that need to be installed and the time it takes to install.

As the detector offers 15 different modes of detection, the installation is made even simpler since one device suits all applications. whatever type of detection is required.

Using patented, advanced optical scatter sensor design and sophisticated electronic technology, Fike delivers reliable smoke and/or heat detection using our Sita Multipoint ASD significantly reducing the risk of nuisance fire alarms.

- Flexible options/modes of fire detection
- Optional built-in sounder or a sounder strobe in a single device
- Self-calibrates every 6 hours
- Continuously monitors for dust contamination



Detectors and sounders - installation

The Sita Multipoint ASD is available with or without a full specification integral 90dBA sounder, no extra devices need to be purchased when audible warning is required. If extra sound is required or for areas that do not require detection, then a choice of several different stand alone sounders or sounder beacons can be used on the same two wires.

- 15 modes of detection
- SitaMultipoint ASD saves the cost of a sounder
- Warning of head contamination, before going into false alarm
- Easily removable for maintenance at height

Detection Modes

SMOKE 1

Used where ionization detectors are normally fitted, especially when there are high ceilings or a risk of free burning fires (chemical stores etc), or fires that need to be detected extremely quickly.

SMOKE 2

Used where optical detectors are normally fitted, when there is a risk of a smouldering fire and for escape routes.

SMOKE 3

Designed for use in areas that are prone to nuisance alarms. The reduced sensitivity linked with a time delay feature means that a higher concentration of smoke needs to be present for a constant time period before a fire decision is made.

HEAT 1

(Rate-of-Rise) – Used where a standard rate-of-rise detector would normally be used.

HEAT 2

(Standard Fixed Temperature – 58°C /136°F approximately)
A standard fixed temperature heat detector, suitable for domestic kitchens, etc.

HEAT 3

(High Fixed Temperature – 90°C / 194°F approximately) – High fixed temperature heat detector suitable for boiler rooms, commercial kitchens, etc.

This document is not to be used for installation purposes and is subject to Fike's full disclaimer at fike.com/disclaimer. Fike reserves the right to change product designs or specifications without obligation and without further notice.



ALARM CONFIRMATION FEATURE

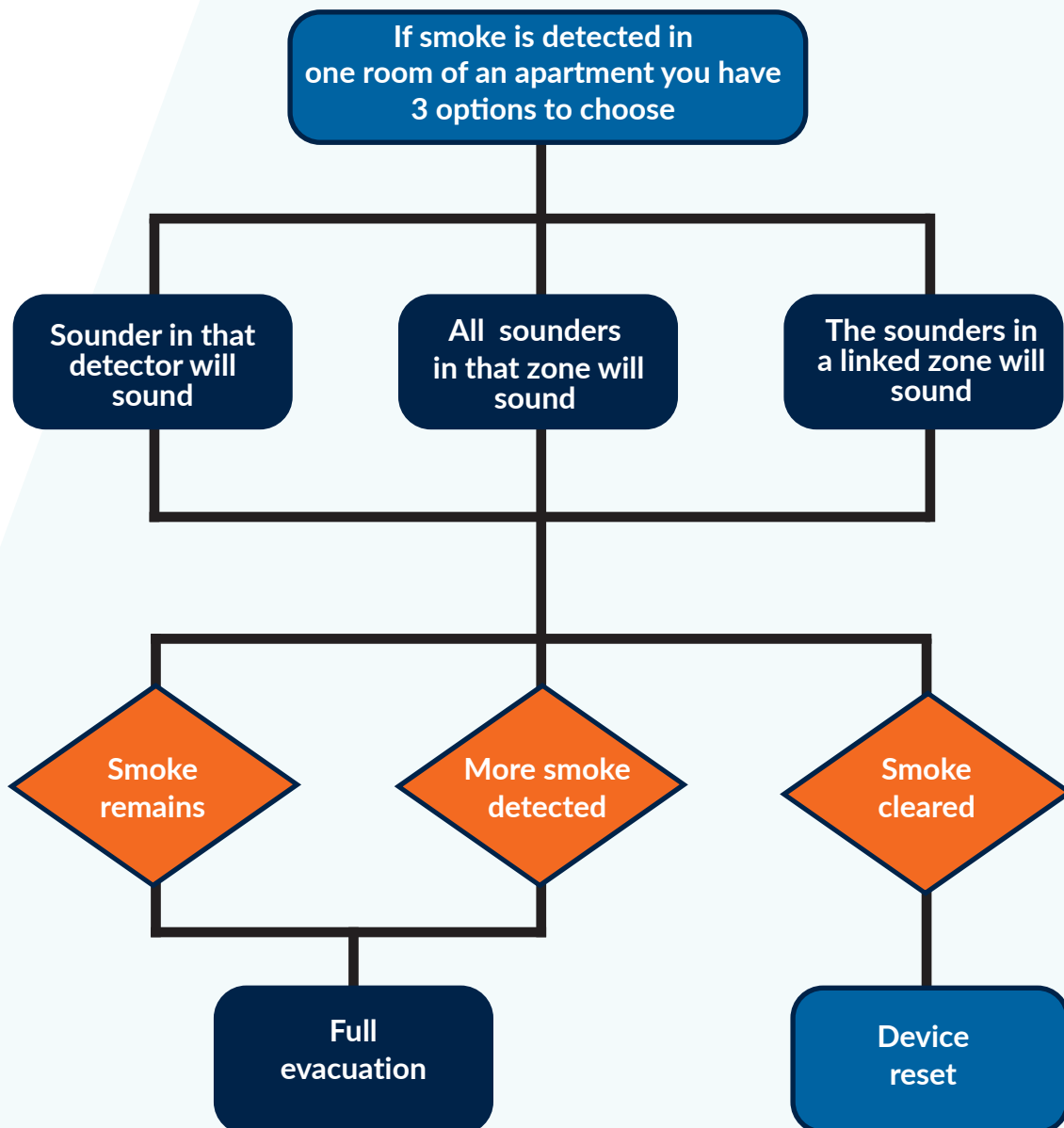
Early warning fire alarm verification is often crucial. The disruption to business and costs associated with responding to false alarms can be enormous. The CIE-A-200 offers alarm confirmation technology, which can help eliminate nuisance or false alarms.

Using the built-in alarm confirmation feature, until an alarm has been confirmed within an individual area, only that area is evacuated. At the same time, if an alarm is triggered in a common area, the device initiates a full alarm evacuating all surrounding areas. This unique panel feature is vital where two-stage alarms are required.

For example - when an alarm is indicated by an individual detector, the sounder for that device is activated and the control panel carries out the configured number of confirmation checks on that specific zone.

If the alarm is confirmed, the control panel enters the fire state and all additional notification devices are activated throughout the facility. If the detector alarm is rejected, the sounder in the device is silenced, and the detector in alarm is reset.

For safety, activating a call point will override any delays or confirmation settings.



This document is not to be used for installation purposes and is subject to Fike's full disclaimer at fike.com/disclaimer. Fike reserves the right to change product designs or specifications without obligation and without further notice.

DETECTORS AND ACCESSORIES

	205-0003	Sita Multipoint ASD Detector Multifunction smoke and heat detector with three smoke detection modes and three heat detection modes. Inbuilt short circuit isolator. These options are set by PC or control panel depending on the system type. Supplied complete with dust cover (includes mounting base).
	205-0001	Sita Multipoint ASD Detector with Sounder as above but complete with inbuilt sounder featuring seven sound patterns and three volume levels. Inbuilt short circuit isolator (includes mounting base).
	205-0012	Sita Multipoint ASD Detector with Sounder / Strobe as above but complete with inbuilt sounder / strobe featuring seven sound patterns and three volume levels and LED strobe array. Inbuilt short circuit isolator (includes mounting base).
	403-0006	Sita Manual Call Point Manual call point with re-settable element, reset key, back box, adaptor plate for flush mount and inbuilt short circuit isolator (includes call point cover).
	403-0007	Sita Manual Call Point Weatherproof IP65 weatherproof manual call point with re-settable element, reset key, back box, adaptor plate for flush mount and inbuilt short circuit isolator (includes call point cover).
	313-0001 313-0002	Sita Sound Point: Red/ White Sounder with 90dB output, seven sound patterns and inbuilt short circuit isolator. Supplied complete with back box and flush adaptor plate.
	323-0001	Sita Hi Point Sounder with 87dB output, seven sound patterns and inbuilt short circuit isolator. Supplied complete with back box and flush adaptor plate. Suitable for indoor (IP21) and outdoor (IP55) applications.
	326-0001 326-0003	Sita Sounder: Low Profile/ Deep Base Sounder with 88dB output, three sound patterns and inbuilt short circuit isolator. Supplied complete with red mounting base.
	326-0021R	Sita Sounder/Strobe: Low Profile Sounder and LED visual indication beacon (strobe) with 88dB output, three sound patterns and inbuilt short circuit isolator. Supplied complete with red mounting base and red lens.
	326-0032-R	Sita Sounder/Strobe Deep Base, stand-alone sounder and LED visual indication beacon (strobe) with 88dB output, three sound patterns and inbuilt short circuit isolator. Supplied complete with red mounting base and red lens.
	326-0015-R	Sita Strobe: Weatherproof LED visual indication beacon (strobe) with inbuilt short circuit isolator. Supplied complete with red mounting base and red lens. Note: This item does not include a sounder.
	25-0046-201	ASD Head Removal Tool To remove the optical chamber of Multipoint ASD detectors. The tool may be mounted onto a pole for high level access. This tool fits directly onto the solo poles range of detector test equipment.