

MANUAL RELEASE/ABORT SWITCH

Replacement Parts

| Part Number | Description |
|-------------------------|--------------------------------------|
| 10-2975 | Manual Release/Abort Switch Assembly |
| 10-2982 ¹ | Manual Release Switch |
| 10-2981 ¹ | Abort Switch |
| 10-2976 ¹ | 304 Stainless Steel Faceplate |
| 02-16365 ^{2,3} | Contact Block, Normally Open (NO) |
| 02-16366 ³ | Contact Block, Normally Closed (NC) |
| 02-16367 ² | Dummy Contact Block |
| 02-2213 ² | Security Tie (beaded cable) |
| 02-16376 ² | Safety Clip |
| 02-2316 ^{2,3} | Mounting Screws (4 required) |
| 02-13170 ² | Key, #0 |
| 02-4780 ^{2,3} | Contact Block Adapter |
| 02-16401 ^{2,3} | Anti-Rotation Ring |
| 02-16402 ^{2,3} | Locking Lever Cap |
| 02-12318 | Locking Ring Wrench |
| 02-16369 ⁴ | 30mm to 22mm Trim Ring |
| 02-2123 | 4-Gang Masonry Box, RACO 693 |

¹Included in 10-2975 switch assembly.

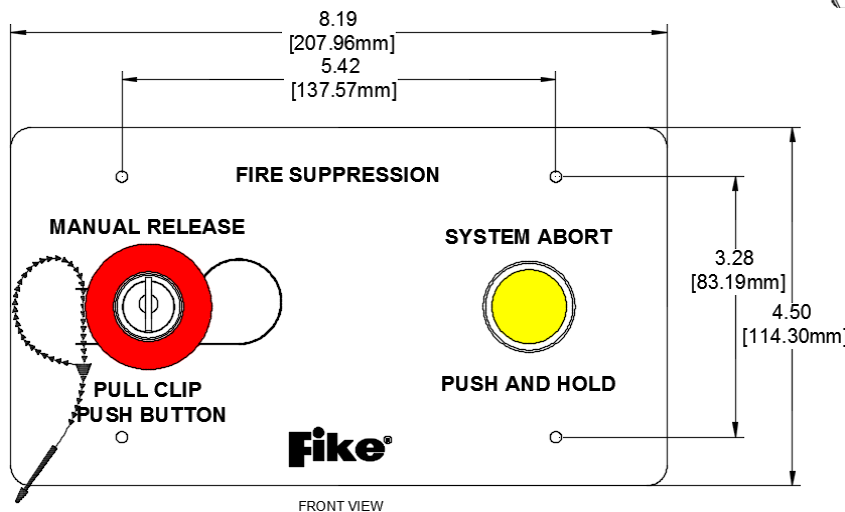
²Included in 10-2982 switch assembly.

³Included in 10-2981 switch assembly.

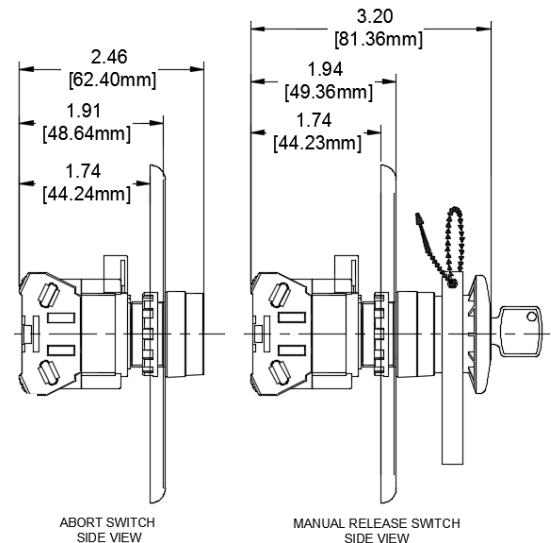
⁴Allows 22mm switch to be mounted to a 30mm switch face plate.

Specifications

| | |
|-------------------------------|---|
| Operating Temperature: | 0°C to 49°C (32°F to 120°F) |
| Operating Humidity: | 93% RH, non-condensing |
| Weight: | 0.60 lb. (272 grams) |
| Mounting: | 4-gang masonry box (RACO 693) or equivalent. For indoor use only. |
| Contact Block Rating: | 30VDC @ 5 AMPS |
| Applicable Wire Size: | Minimum 1 x 22 AWG, max 2 x 14 AWG or 1 x 12 AWG |
| Approvals: | Underwriters Laboratories (UL) Factory Mutual (FM) California State Fire Marshal (CSFM) |
| Compliance: | Restriction of Hazardous Substances (RoHS) |



Switch Front View

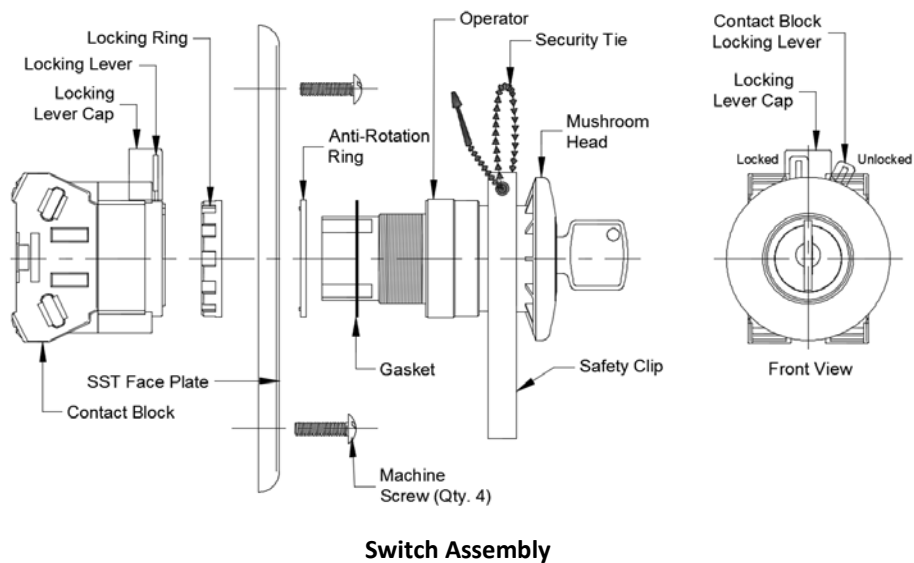


Switch Side Views

Manual Release Switch Assembly

The manual release switch components are shipped disassembled and must be assembled prior to installation using the following instructions.

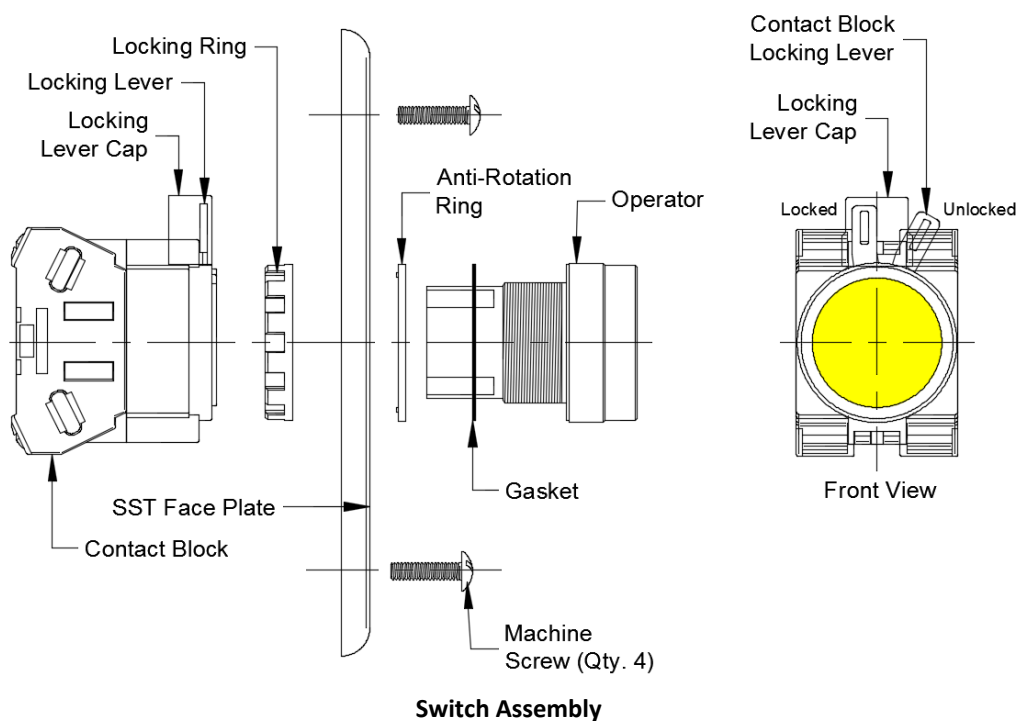
1. Remove the protective plastic film from the stainless steel face plate.
2. Remove the locking ring from the switch operator.
3. Verify that the TOP mark on the operator and the triangle mark (▲) on the anti-rotation ring are alligned.
4. Insert the switch operator through the hole provided in the switch face plate making sure the TOP mark on the operator is facing up and is alligned with the anti-rotation notch provided in the face plate.
5. Install the locking ring onto the switch operator. Tighten using locking ring wrench. Do not over tighten if using pliers. Maximum torque should not exceed 2N-m (20.4 Kgf cm). Do not excessively tighten the locking ring.
6. Remove the locking lever cap from the contact block locking lever.
7. Turn the locking lever to the unlocked position.
8. Mount the contact block to the switch operator.
9. Turn the locking lever to the locked position.
10. Install the locking lever cap onto the locking lever.
11. Switch assembly is complete.



Abort Switch Assembly

The abort switch components are shipped disassembled and must be assembled prior to installation using the following instructions.

1. Remove the protective plastic film from the stainless steel face plate.
2. Remove the locking ring from the switch operator.
3. Verify that the TOP mark on the operator and the triangle mark (▲) on the anti-rotation ring are aligned.
4. Insert the switch operator through the hole provided in the switch face plate making sure the TOP mark on the operator is facing up and is aligned with the anti-rotation notch provided in the face plate.
5. Install the locking ring onto the switch operator. Tighten using locking ring wrench. Do not over tighten if using pliers. Maximum torque should not exceed 2N-m (20.4 Kgf cm). Do not excessively tighten the locking ring.
6. Remove the safety lever lock from the contact block locking lever.
7. Turn the locking lever to the unlocked position.
8. Mount the contact block to the switch operator.
9. Turn the locking lever to the locked position.
10. Install the locking lever cap onto the locking lever.
11. Switch assembly is complete.



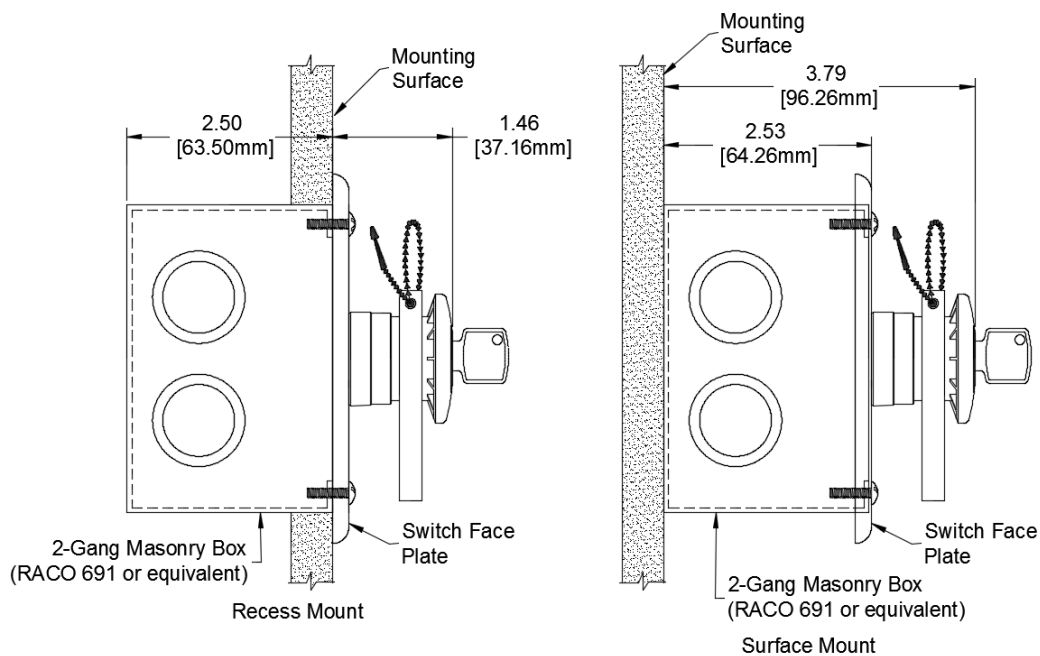
Switch Installation

WARNING: If installing the switch in an operational system:

- 1) Disconnect the releasing mechanism from all suppression cylinders/containers prior to installation to prevent accidental system discharge.
- 2) Power down the system by removing all power sources feeding the control unit (AC and DC).

NOTE: The mounting location for the switch should be free from excessive vibration, dust, and moisture.

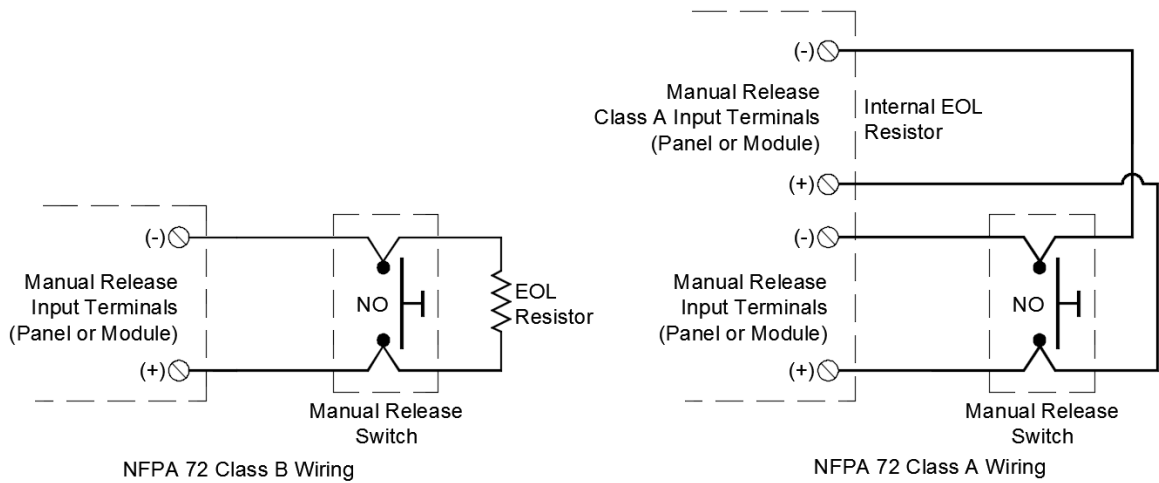
1. Install the electrical box (recess or surface mount).
2. Pull field wiring into electrical box.
3. Connect field wiring to switch contact blocks. Maximum 8mm (0.31 in.) recommended wire insulation stripping length.
4. Secure stainless steel faceplate to mounting box with supplied machine screws.
5. Reapply power to the system and test switch operation prior to reconnecting releasing mechanism to all suppression cylinders/containers.
6. Install the safety clip to the back of the manual release switch mushroom head.
7. Install beaded security tie through holes provided in safety clip. Pull tight making sure the safety clip is held firmly in place preventing the red mushroom head from being pressed without removal of the safety clip.
8. Store switch keys in a secure location.



Switch Mounting

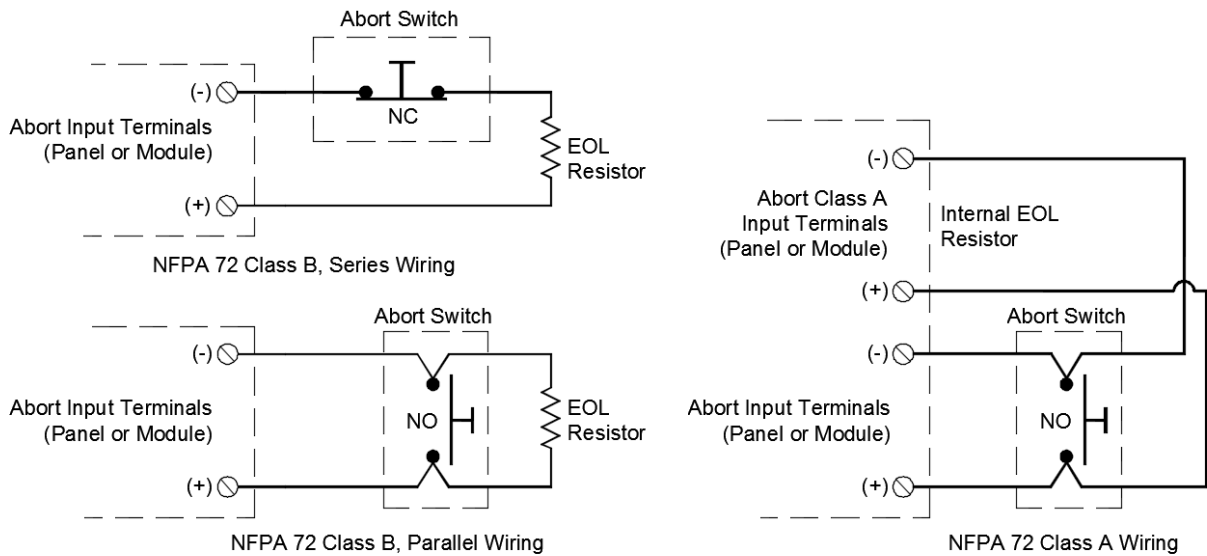
Switch Wiring

Note: Incoming and outgoing conductors must be separated at all terminal connections.



See Control Unit Manual for Specific Wiring Requirements.

Manual Release Switch Wiring



See Control Unit Manual for Specific Wiring Requirements.

Abort Switch Wiring