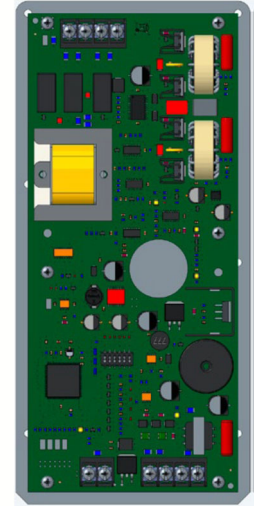


FIK-INT50W Intelligent 50 Watt Internal Amplifier

The FIK-INT50W is capable of producing 50 watts of audio power on one speaker circuit. It is designed to conveniently mount in the FCP-300ECS or the FCP-2100ECS cabinet, making it an ideal solution for small voice evacuation installations.

The FIK-INT50W is powered and supervised from the FCP-300ECS or FCP-2100ECS, eliminating the need for an additional AC source and battery backup.



COMPATIBILITY

- FCP-300ECS
- FCP-2100ECS

FEATURES

- SBUS addressable
- 50 watts of supervised audio power
- One speaker circuit
- UL 864 and UL 2572
- Easy to install the assembly in the ECS cabinet
- System Sensor speakers. See the FACP installation manual for a list of compatible speakers
- Six-wire connection to the ECS system: Two wires for the voice bus and two wires for the SBUS
- Two-wires for the 24VDC power source from a NAC circuit on the FACP programmed for constant auxiliary power
- UL listed for 520Hz signaling when used with compatible System Sensor speakers. See the FACP installation manual for a list of compatible speakers

APPROVALS

NFPA 13, NFPA 70, NFPA 72, UL 2572, UL 1711 & UL 864: Local Protective Signaling Systems.

- UL Listed
- Factory Mutual Approved
- CSFM

For exact certification listings, please reference the respective agency website.

SPECIFICATIONS

Physical	
Flush Mount Dimensions:	4.5" W x 10" H x 1.81" D (11.43 cm W x 25.4 cm H x 4.6 cm D)
Shipping Weight:	4 lbs.
Environmental	
Operating Temperature:	32°F to 120°F (0°C to 49°C)
Humidity:	10 to 93% relative humidity (non-condensing)
Electrical	
Power:	24Vdc
Standby Current:	52 mA
Alarm Current:	275 mA @ 25V 310 mA @ 70.7V
Full Alarm Load Current:	2.84 A @ 25V 2.9 A @ 70.7V
Total Power:	50W @ 25Vrms or 70.7Vrms
SBUS Current:	10 mA standby and alarm
Battery Charging Capacity:	7 – 35 AH
Voice Integration Wiring:	Six conductors (two voice bus and four SBUS)

ORDERING INFORMATION

Part Number	Description
FIK-INT50W	Intelligent 50 watt internal amplifier, 120 VAC
Accessories	
FIK-AMPMT	Mounting kit. It is needed when mounting in the ECS cabinet that contains a FIK-NVCM.