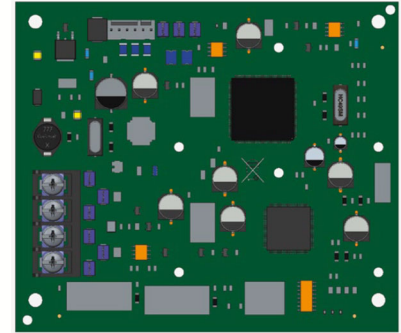


# FIK-NIC Network Interface Card

The FIK-NIC, Network Interface Card, is an optional component of the Fike FCP Series fire alarm control panels. It allows the subassemblies to connect to the Broadband network from remote locations.

The FIK-NIC card comes standard with network connections using unshielded, twisted-pair copper wire. The following optional fiber-optic network connections using add-on modules are available.

- FIK-FML multi-mode fiber module (optional)
- FIK-FSL single-mode fiber module (optional)



## INSTALLATION

The FIK-NIC is adaptable for installation in the standard Fike FCP series cabinets. Typically, the FIK-NIC card is mounted on standoffs under the motherboard (except with the FCP-75). For instructions on the installation of the FIK-NIC, refer to the following documents:

- P/N: LS10172-002FK-E FIK-NIC Installation Instruction
- P/N: LS10178-001FK-E Fiber Modules Installation Instruction

## COMPATIBILITY

The FIK-NIC is compatible with the following Fike FCP series panels:

- FCP-2100 / FCP-2100ECS / RFCP-2100
- FCP-300 / FCP-300ECS
- FCP-75

## FEATURES

- Listed under UL Standard 864, 9<sup>th</sup> Edition
- Provides the capability for networked FACP's to connect in Class A or Class B configurations
- Offers standard unshielded, twisted-pair copper wire network connections
- Provides add-on fiber-optic modules that allow the network connection through single or multi-mode fiber-optic cables
- FIK-NIC can be mounted within the FACP cabinet (except with the FCP-75)
- FIK-NIC-KIT accessory kit is available if you want to install the FIK-NIC outside of the FACP cabinet
- Has 625K baud ARCNET repeater
- Mounting hardware included

## APPROVALS

- UL Listed
- CSFM
- Factory Mutual Approved

*For exact certification listings, please reference the respective agency website.*

## SPECIFICATIONS

<b>Operating Temperature:</b>	32° - 120°F (0° - 49°C)
<b>Humidity:</b>	0% to 93% relative humidity (non-condensing)
<b>Operating Voltage:</b>	24 Vdc
<b>Current:</b>	21 mA (standby and alarm)
<b>Wire:</b>	16 to 18 AWG twisted-pair, unshielded Up to 3,000 ft. (914.4 m) between each node.
<b>Fiber-Optic Cable:</b>	<b>FIK-FML:</b> Up to 200 microns optimized for 62.5/125 microns; up to 8dB loss between nodes.
	<b>FIK-FSL:</b> Optimized for 9/125 micrometer cable @ 1310 nm; up to 30dB loss between nodes.

## ORDERING INFORMATION

Part Number	Description
<b>FIK-NIC</b>	Network Interface Card
<b>FIK-NIC-KIT</b>	Accessory kit for installing the FIK-NIC outside of the FACP cabinet. Includes one FIK-NIC card.
<b>FIK-FML</b>	Fiber Module, multi-mode
<b>FIK-FSL</b>	Fiber Module, single-mode