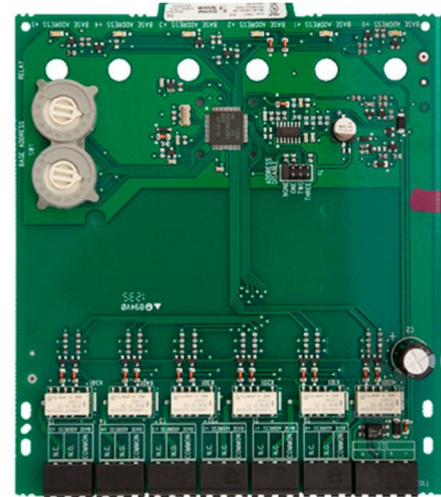


FIK-CR-6 Addressable Six Relay Module

The FIK-CR-6 is an addressable relay module for use with Fike FCP Series fire alarm control panels (FACPs). The FIK-CR-6 has six Form C relays. It allows a Fike FACP to switch discrete contacts by code command. If needed, you can disable a maximum of three unused modules on the FIK-CR-6 board.

The FIK-CR-6 contacts are used for virtually any normally open or normally closed application. Each FIK-CR-6 is programmed with a unique signaling line circuit (SLC) loop address. When an event occurs that controls the FIK-CR-6, the relay is triggered by the FACP.

The FIK-CR-6 module mounts in the BB-2 cabinet. The BB-2 cabinet has a built-in chassis that will accommodate one or two FIK-CR-6 modules.



COMPATIBILITY

- FCP-75
- FCP-300 / FCP-300ECS
- FCP-2100 / FCP-2100ECS / RFCP-2100

FEATURES

- Six Form C contacts
- Removable 12 to 18 AWG plug-in terminal blocks
- Relay programming is completely flexible – can be mapped to zone conditions
- Individual LED for each relay contact
- Two module mounting in the BB-2 cabinet
- Up to three unused relays can be disabled
- Rotary address switches for fast installation
- Mounting hardware included
- Class A or Class B operation

APPROVALS

- UL Listed
- Factory Mutual Approved
- CSFM

For exact certification listings, please reference the respective agency website.

SPECIFICATIONS

Dimensions (HxWxD):	6.8" x 5.8" x 1.25" (17.27 cm x 14.73 cm x 3.18 cm)
Shipping Weight:	6.3oz (196 g)
Operating Temperature:	32° -120°F (0° - 49°C)
Humidity:	10 to 85%, non-condensing
Operating Voltage:	15 to 32Vdc
Standby Current:	1.45 mA maximum
Alarm Current:	30 mA / relay pulse (15.6 mS pulse duration under panel control)
Relay Contact Ratings:	2 A @ 25 Vac (PF=.35), non-coded 3 A @ 30 Vdc resistive, non-coded 2 A @ 30 Vdc resistive, coded 0.46 A @ 30 Vdc (L/R=20 ms, non-coded) 0.7 A @ 70.7 Vac (PF=.35), non-coded 0.9 A @ 125 Vdc resistive, non-coded 0.5 A @ 125 Vac (PF=.75), non-coded 0.3 A @ 125 Vac (PF=.35), non-coded

ORDERING INFORMATION

Part Number	Description
FIK-CR-6	Six Relay Module
BB-2	Multi-Module Cabinet, two module, 15.25" H x 12.5" W x 3" D