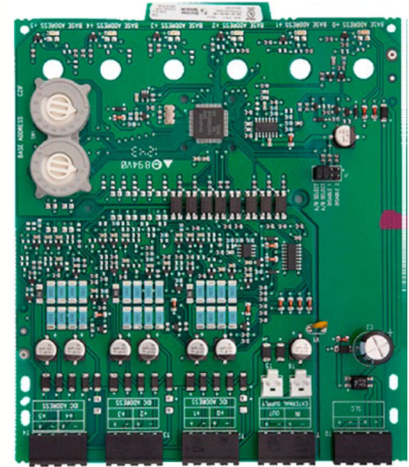


FIK-CZ-6 Six Zone Interface Module

The FIK-CZ-6 is an addressable zone interface module for use with the Fike FCP Series fire alarm control panels (FACPs). The FIK-CZ-6 provides six-zone inputs that allow a Fike FACP to interface and monitor two-wire conventional smoke detectors. This means you can retrofit an existing building and use existing conventional devices.

The inputs on the FIK-CZ-6 share a common FACP signaling line circuit (SLC) input and the initiating device circuits share a common external power supply. Otherwise, each input on the module operates independently from the others. If needed, you can disable a maximum of two unused inputs on the FIK-CZ-6 board.



It transmits the status of a zone of two-wire detectors to the FACP. Status conditions are reported as normal, open, or alarm. The FIK-CZ-6 supervises the zone of detectors and the connection of the external power supply. All two-wire detectors being monitored must be UL compatible with the FIK-CZ-6.

The FIK-CZ-6 mounts in the BB-2 cabinet. The BB-2 has a built-in chassis that will accommodate one or two FIK-CZ-6 modules.

COMPATIBILITY

- FCP-75
- FCP-300 / FCP-300ECS
- FCP-2100 / FCP-2100ECS / RFCP-2100

FEATURES

- Converts a conventional two-wire loop to an SLC loop
- Six zone inputs
- Fully supervised
- Support for Class B or Class A wiring
- Removable 12 to 18 AWG plug-in terminal blocks
- Individual LED for each relay contact
- Two module mounting in the BB-2 cabinet
- Up to two unused modules can be disabled
- Rotary address switches for fast installation
- Mounting hardware included

APPROVALS

- UL Listed
- CSFM
- Factory Mutual Approved

For exact certification listings, please reference the respective agency website.

SPECIFICATIONS

Dimensions (HxWxD):	6.8" x 5.8" x 1.25" (172.7 mm x 147.32 mm x 31.75 mm)
Shipping Weight:	6.3 oz (196 g)
Operating Temperature:	32° - 120°F (0° - 49°C)
Humidity:	10 to 93%, non-condensing
Operating Voltage:	15 to 32 Vdc
Standby Current:	2 mA
Alarm Current:	40 mA (assumes all six LEDs solid on)
Initiating Device Circuit:	Supervised, power-limited
IDC Wiring Resistance:	25Ω maximum
External Power Supply:	50 mA standby current 270 mA alarm current

ORDERING INFORMATION

Part Number	Description
FIK-CZ-6	Six Zone two-wire interface module
BB-2	Multi-Module Cabinet, two modules, 15.25" H x 12.5" W x 3" D