

# FIK-SC-6 Addressable Notification Module

The FIK-SC-6 is an addressable notification module for use with the Fike FCP Series fire alarm control panels (FACPs). The FIK-SC-6 has six integrated modules for maximum flexibility, allowing you to add notification circuits wherever needed on an FACP signaling line circuit (SLC) loop.

The FIK-SC-6 provides supervised monitoring of wiring to load devices that require an external power supply or amplifier to operate, such as bells, horns, and strobes. It is capable of supporting Class B and Class A wiring.

Upon command from the FACP, the FIK-SC-6 will disconnect the supervision and connect the external power supply across the load device. The disconnection of the supervision provides a positive indication to the panel that the control relay turned on. The external power supply is always relay isolated from the SLC loop so that a trouble condition on the power supply will never interfere with the rest of the system.

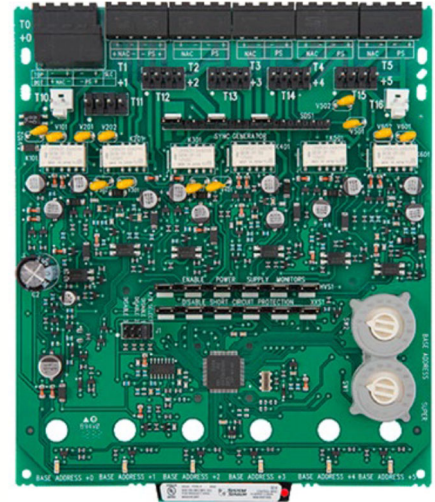
If needed, you can disable a maximum of three unused modules on the FIK-SC-6 board. Each module has terminals for connection to an external supply circuit for powering devices on its notification appliance circuit (NAC). One or more multiple power supplies can be used.

The FIK-SC-6 has a short circuit protection monitor for each module. The short circuit protection monitor protects external power supplies against short circuit conditions on the NAC. In addition, an algorithm is incorporated to find a short when the module is active. The module will close all circuits that are not shorted to find the NAC with the problem.

## COMPATIBILITY

The FIK-SC-6 is compatible with the following Fike FACPs:

- FCP-75
- FCP-300 / FCP-300ECS
- FCP-2100 / FCP-2100ECS
- RFCP-2100



## FEATURES

- Flexible solution for adding notification circuits where needed
- Removable 12 to 18 AWG plug-in terminal blocks
- Support for Class B or Class A wiring
- Individual LED for each module
- Two module mounting in the FIK-BB-2 cabinet
- Unused modules can be disabled
- Rotary address switches for fast installation
- Mounting hardware included

## APPROVALS

- UL Listed
- Factory Mutual Approved
- CSFM

*For exact certification listings, please reference the respective agency website.*

## SPECIFICATIONS

<b>Dimensions (HxWxD):</b>	6.8" x 5.8" x 1.25" (17.27 cm x 14.73 cm x 3.18 cm)
<b>Shipping Weight:</b>	6.3 oz (196 g)
<b>Operating Temperature:</b>	32° - 120°F (0° - 49°C)
<b>Humidity:</b>	10% to 85%, non-condensing
<b>Operating Voltage:</b>	15 to 32 Vdc
<b>Standby Current:</b>	2.65 mA @ 24V
<b>Alarm Current:</b>	35 mA maximum (assumes all six relays and LEDs on)
<b>End-of-Line Resistance:</b>	47kΩ
<b>SLC Wiring Resistance:</b>	41Ω
<b>NAC Wiring Resistance:</b>	40Ω

## ORDERING INFORMATION

Part Number	Description
<b>FIK-SC-6</b>	Six Input notification module
<b>FIK-BB-2</b>	Module cabinet (has built-in chassis that accommodates up to two FIK-SC-6 modules)