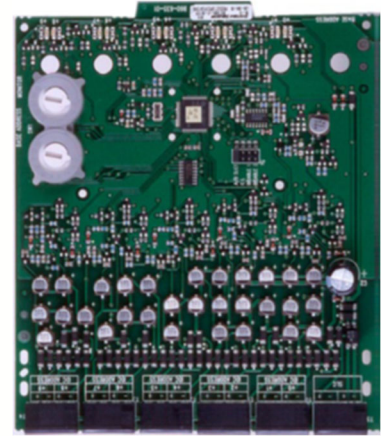


FIK-IM-10 Intelligent Ten Input Monitor Module

The FIK-IM-10 is a 10 point addressable monitor module for use with Fike FCP Series fire alarm control panels. The FIK-IM-10 acts as an interface to contact devices, such as waterflow switches and pull stations. The multiple input design allows for easy and effective installation.

The FIK-IM-10 supports ten Class B supervised contact inputs, or five Class A supervised contact inputs. Conventional 4-wire smoke detectors can be monitored for alarm and trouble conditions.

You can install up to two FIK-IM-10 modules in a BB-2 accessory cabinet.



COMPATIBILITY

- FCP-75
- FCP-300 / FCP-300ECS
- FCP-2100 / FCP-2100ECS
- RFCP-2100

FEATURES

- Ten contact monitor
- Support for Class A or Class B wiring
- Fully supervised
- LED indicator for each input
- Disable unused addresses
- Rotary address switches for fast installation
- Mounting hardware included

APPROVALS

- UL Listed
- CSFM
- Factory Mutual Approved

For exact certification listings, please reference the respective agency website.

SPECIFICATIONS

Dimensions (HxWxD):	6.8" x 5.8" x 1.25" (172.7 mm x 147.3 mm x 31.7 mm)
Weight:	6.3 oz (196 g)
Operating Temperature:	32°F to 120°F (0°C to 49°C)
Humidity:	10 to 93%, non-condensing
Wire Gauge:	12 – 18 AWG
Operating Voltage:	15 – 32 Vdc
Standby Current:	3.5 mA
Alarm Current:	55 mA max. (all ten LEDs on)
IDC Voltage:	10.2 Vdc maximum
IDC Current:	240 µA maximum
SLC Wiring Resistance:	40 Ω maximum

ORDERING INFORMATION

Part Number	Description
FIK-IM-10	10 Input monitoring module
BB-2	Module Cabinet, red