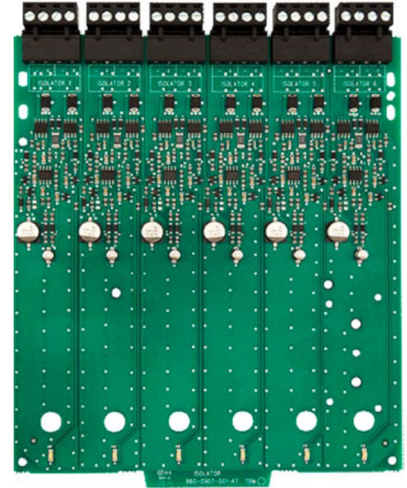


## FIK-ISO-6 Six Fault Isolator Module

The FIK-ISO-6 Fault Isolator Module provides six equivalent circuits that will allow a portion of the communications loop to continue operating when a short circuit occurs on that loop. The FIK-ISO-6 module is an automatic switch that opens when the line voltage drops below four volts.

The FIK-ISO-6 module has an amber LED indicator that will blink in the normal state for each of the six inputs and will latch on during a short circuit condition. The module will automatically restore the communications loop to normal condition when the short circuit is removed.

The FIK-ISO-6 Isolator Module should be spaced between groups of sensors or modules (maximum of 25) in a loop to protect the rest of the loop. If a short occurs between any two isolators, then both isolators immediately switch to an open circuit state, isolating the devices between them. The remaining units on the loop continue to operate fully.



### COMPATIBILITY

The FIK-ISO-6 is compatible with the following Fike FCP series panels:

- FCP-75
- FCP-300 / FCP-300ECS
- FCP-2100 / FCP-2100ECS
- RFCP-2100

### FEATURES

- Removable 12 to 18 AWG plug-in terminal blocks
- Individual LED status indicators
- Six individual, Class B isolator circuits
- Mount up to two modules in BB-2 cabinet
- Mounting hardware included

### APPROVALS

- UL Listed
- CSFM
- Factory Mutual Approved

*For exact certification listings, please reference the respective agency website.*

## SPECIFICATIONS

<b>Dimensions (HxWxD):</b>	6.8" x 5.8" x 1" (17.27 cm x 14.73 cm x 2.54 cm)
<b>Shipping Weight:</b>	1.1 lb. (0.50 kg) includes packaging
<b>Mounting Options:</b>	FIK-BB-2
<b>Operating Temperature:</b>	32° - 120°F (0° - 49°C)
<b>Humidity:</b>	10% – 85%, non-condensing
<b>Operating Voltage:</b>	15 – 32 Vdc
<b>Standby Current:</b>	450 µA per circuit 2.7 mA all circuits
<b>Current Draw:</b>	17 mA per circuit maximum per circuit in isolation 102 mA with all circuits in isolation

## ORDERING INFORMATION

Part Number	Description
<b>FIK-ISO-6</b>	Six Isolator Module
<b>BB-2</b>	Module Cabinet (up to two FIK-ISO-6 modules)