

# FIK-PULL-DA Addressable Pull Station (Dual-Action)

704 SW 10th Street  
Blue Springs, MO 64015  
Phone: 816.229.3405; Fax: 816.228.9277  
www.fike.com

**SPECIFICATIONS**

Normal Operating Voltage:	24VDC.
Average Operating Current (LED Flash):	375 µA.
Maximum Operating Current (LED On):	5 mA.
Temperature Range:	32°F – 120°F (0°C – 49°C).
Relative Humidity Range:	10% - 93% non-condensing.
Dimensions:	5.5" (139.7 mm) H x 4.1" (104.14 mm) W x 2.1" (53.34 mm) D

For system/product documentation including installation, operation, and maintenance, scan QR code or enter URL provided.



<http://www.fike.com/06-912>

**BEFORE INSTALLING**

This pull station must be installed in compliance with the control panel system installation manual, applicable NFPA standards, national and local Fire codes and the requirements of the AHJ (Authority Having Jurisdiction). Regular testing of the devices should be done in accordance with the appropriate NFPA standards. Pull stations offer maximum performance when installed in compliance with the National Fire Protection Association (NFPA); see NFPA 72.

NOTICE: This manual should be left with the owner/user of this equipment.

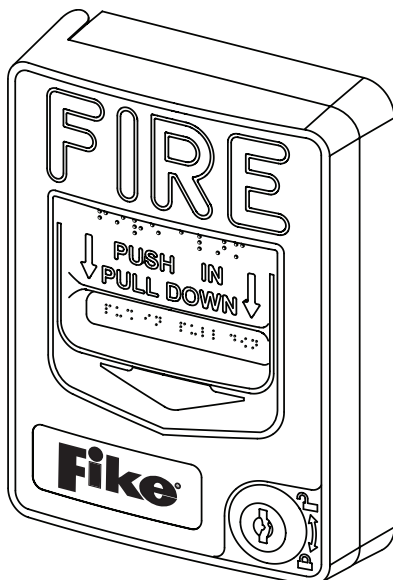
**GENERAL DESCRIPTION**

The FIK-PULL-DA addressable pull station is a non-coded, dual-action manual pull station with a key-lock reset feature. It provides Fike intelligent fire alarm control panels (FACP) with one addressable alarm initiating input. The addressable module is housed inside the pull station. The FIK-PULL-DA is compatible with all Fike intelligent panels that use Fike IDP mode. Refer to the FACP Installation Manual to determine if Fike IDP mode is supported. Operating instructions are molded into the pull station handle along with Braille text. Molded Terminal numbers are also present.

The pull station meets the Americans with Disabilities Act Accessibility Guidelines (ADAAG) controls and operating mechanisms guidelines (section 4.1.3[13]), the Americans with Disabilities Act (ADA) requirement for a 5 lb. maximum pull force to activate the pull station and conforms to ANSI/UL Standard 38.

Rotary dial switches are provided for setting the pull station's address. (See Figure 3.)

**FIGURE 1. ADDRESSABLE MANUAL PULL STATION (DUAL-ACTION)**



P0237-00

**COMPATIBILITY REQUIREMENTS**

To ensure proper operation, this module shall be connected to a compatible Fike system control panel (list available from Fike).

**MOUNTING AND SPACING**

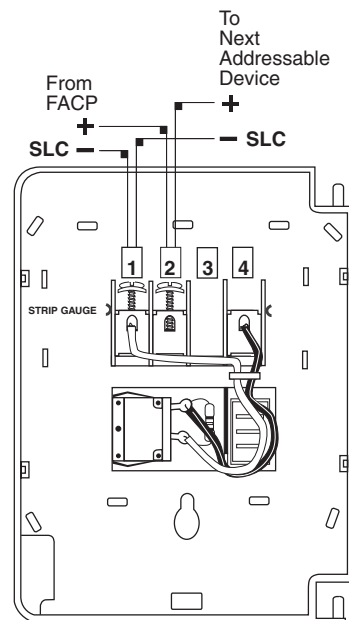
The FIK-PULL-DA Addressable pull station can be surface mounted to a SB-I/O surface backbox or semi-flush mounted on a standard single-gang, double-gang or 4" (10.16 cm) square electrical box. The optional BG-TR trim ring can be used if the FIK-PULL-DA is to be semi-flush mounted.

For specific information regarding pull station placement refer to NFPA 72, ADAAG, and ADA.

**SETTING THE ADDRESS**

The FIK-PULL-DA Addressable pull station is factory preset with address '00'. Set the address for the pull station by turning the rotary address switches on the addressable module mounted inside the pull station. Only one device per address is allowed. Multiple modules may not be set to the same address on the Signaling Line Circuit. Once the address is set, record it in the space provided on the product ID label located inside the pull station.

**FIGURE 2. WIRING DIAGRAM**



P0267-00



Do not loop wiring under any terminals. Break wire run to maintain IDC supervision.

**OPERATION**

**To activate the dual-action pull station:**

Push in and pull down on the handle. The word 'ACTIVATED' appears after the handle is pulled down. This will remain until the pull station is reset.

The pull station includes one Single Pole, Single Throw (SPST) Normally Open (N/O) switch which closes upon activation of the pull station.

**To reset the pull station:**

1. Insert the key into the lock and rotate ¼ turn counterclockwise.
2. Open the door until the handle returns to normal.
3. Close and lock the door.

NOTE: Closing the door automatically resets the switch to the 'Normal' position. Opening the door will not activate or deactivate the alarm switch.

**CAUTION**

Do not detach the door of the pull station during installation. The door of the pull station cannot be reattached to the backplate after the backplate has already been installed onto an electrical box.

**CAUTION**

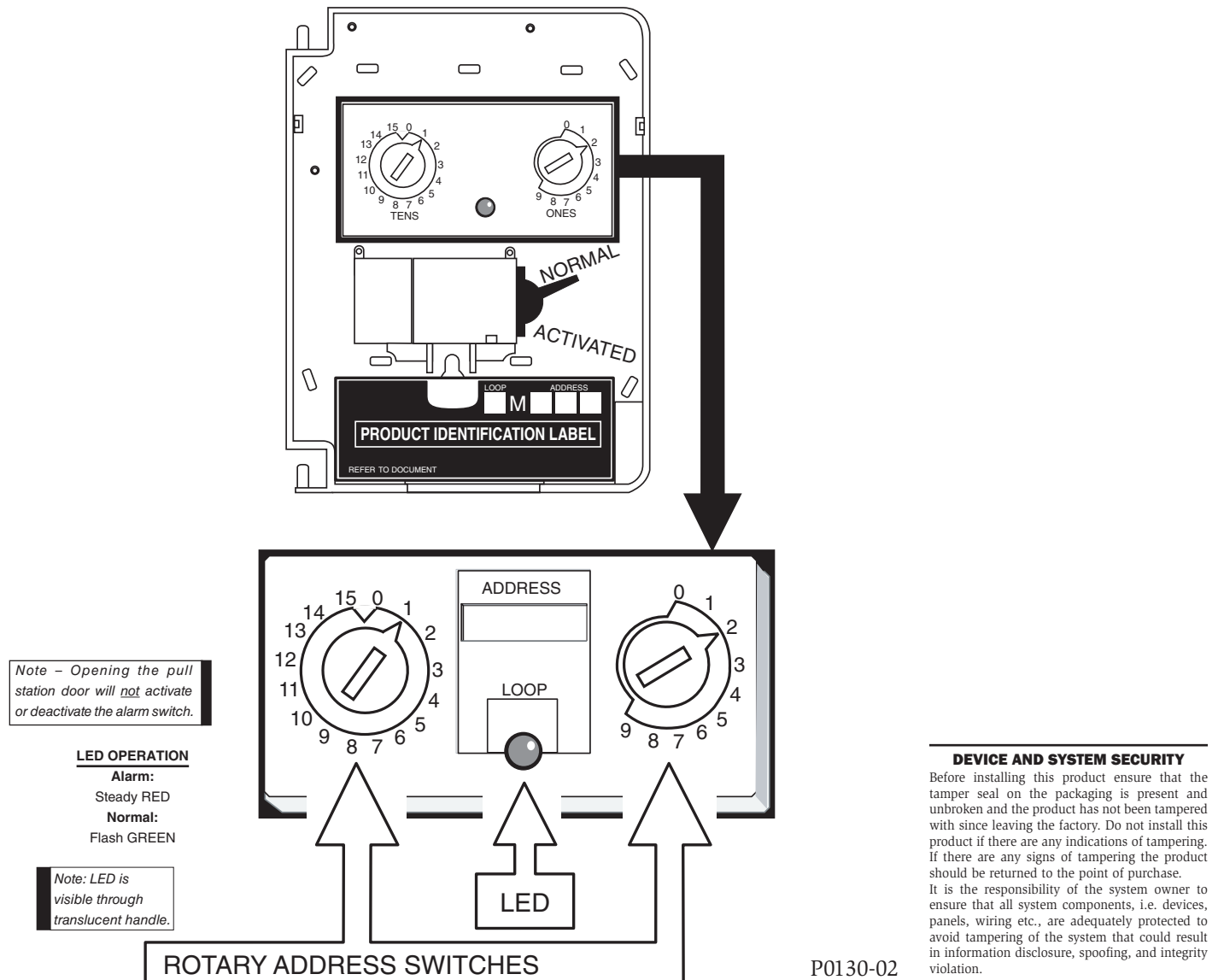
Install the FIK-PULL-DA addressable pull station in accordance with these instructions, applicable NFPA standards, national and local Fire and Electrical codes and the requirements of the AHJ (Authority Having Jurisdiction). Regular testing of the devices should be conducted in accordance with the appropriate NFPA standards. Failure to follow these directions may result in failure of the device to report an alarm condition. For specific information regarding sensor spacing, placement, and special applications, refer to NFPA 72 or the System Smoke Detector Application Guide, available from System Sensor.

Fike is not responsible for devices that have been improperly installed, tested or maintained.

**ADA Compliance**

For ADA compliance, if the clear floor space only allows forward approach to an object, the maximum forward reach height allowed is 48 inches (121.92 cm). If the clear floor space allows parallel approach by a person in a wheelchair, the maximum side reach allowed is 54 inches (137.16 cm).

**FIGURE 3.**



P0130-02