




FIKE CORPORATION
704 SW 10th Street
Blue Springs, MO 64015
www.fike.com

FIK-125WBD Product Installation Document

PN LS10003-002FK-E:A 03/04/2021 ECN: 151526

1 Description

The Installation Instructions provide information on how to install the FIK-125WBD.

 **NOTE 1:** The installation and wiring of this device must be done in accordance with the NFPA 72 and the local ordinances. For more information, see the Fike Series, ECS Installation Manual PN:LS10262-001FK-E.

2 Mounting the FIK-125WBD

1. Make certain the AC and the DC power are removed from the panel.
2. If this module is a replacement for an existing FIK-125W, remove the screws which secure the board to the enclosure.
3. Secure the supplied bracket with the two mounting screws to the top mounting bracket on the FIK-125WBD. See Figure 1.
4. Align the mounting holes on the bracket with the enclosure.
5. Secure the board to the enclosure.
6. Restore the AC power and reconnect the backup batteries.

Figure 1 shows the FIK-125WBD mounting bracket.

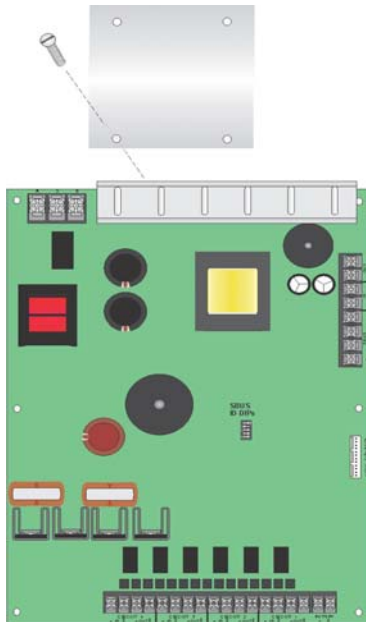


Figure 1 FIK-125WBD Mounting Bracket

Figure 2 shows the FIK-125WBD installed to the enclosure.

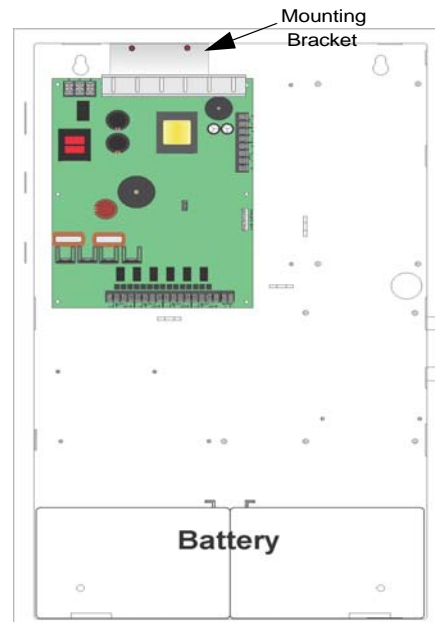


Figure 2 FIK-125WBD Installed in the Enclosure