



**FIKE CORPORATION**  
704 SW 10th Street  
Blue Springs, MO 64015  
www.fike.com

# FIK-EMG Product Installation Document

PN LS10191-002FK-E:A 03/04/2021 ECN: 151526

## 1 Description

The FIK-EMG board provides sixteen zone select buttons and eight ECS message buttons. The FIK-EMG is contained within the Fike Series, ECS panel enclosure.



**NOTE:** The installation and wiring of this device must be done in accordance with the NFPA 72 and the local ordinances.

### 1.1 Compatibility

The FIK-EMG is compatible with the following Fike Series, Fire Alarm Control Panels (FACPs):

- FCP-2100ECS
- FCP-300ECS



**NOTE:** For programming, addressing, and wire connections, refer to the FACP Installation Manual.

## 2 Mounting

1. Remove the AC power from the FACP.
2. Open the cabinet to access the FIK-EMG board.
3. Remove the four screws holding the FIK-EMG as shown in Figure 1.
4. Install the new FIK-EMG board and tighten the screws.

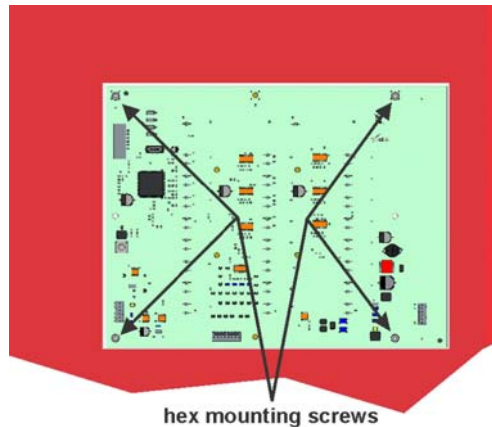


Figure 1 FIK-EMG Mounting Screws

### 2.1 Board Layout

Figure 2 shows the FIK-EMG board layout.

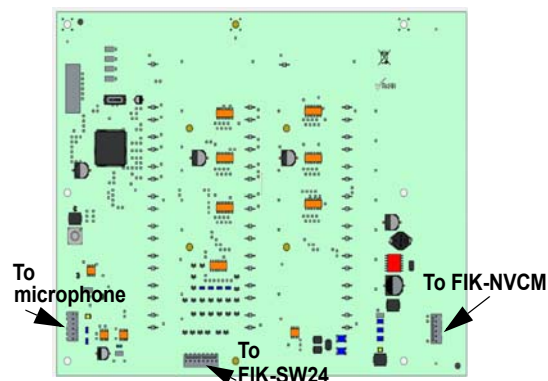
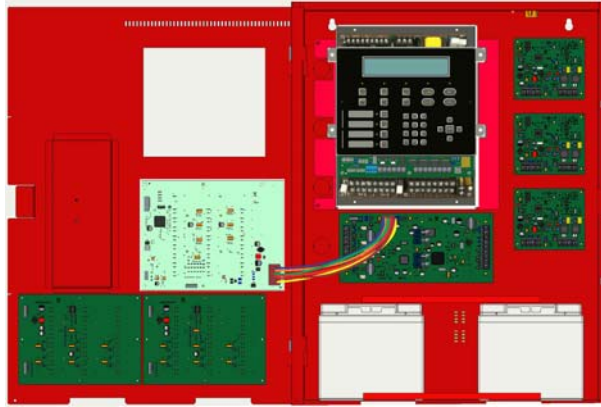


Figure 2 FIK-EMG Board

### 3 Wiring Connection to the FACP

Connect the FIK-NVCM connector to the FIK-EMG touchpad. To properly connect the FIK-NVCM to the FIK-EMG board, refer to Figure 1 and Figure 3.



**Figure 3 FIK-NVCM Connection to the FIK-EMG Touchpad**