



**FIKE CORPORATION**  
704 SW 10th Street  
Blue Springs, MO 64015  
www.fike.com

# FIK-SW24 Product Installation Document

PN LS10264-001FK-E:A 03/03/2021 ECN: 151526

## 1 Description

The FIK-SW24 adds 24 additional switches to the Fike Series, ECS Series controls providing a total of 40 switches (with the FIK-RVM).



**NOTE:** The installation and wiring of this device must be done in accordance with the NFPA 72 and the local ordinances.

### 1.1 Compatibility

The FIK-SW24 is compatible with the Fike Series, Fire Alarm Control Panels, (FACPs).

- FCP-300ECS
- FCP-2100ECS

## 2 Mounting

To install the FIK-SW24, do the following.

1. Open the cabinet door and the dead front panel.
2. Remove the AC power from the main control panel.
3. Disconnect the backup batteries.
4. Install the FIK-SW24 on the mounting studs located on the inside of the dead front panel on the FCP-300ECS. Refer to Figure 1.  
The FCP-2100ECS can hold up to two FIK-SW24s, See Figure 2.
5. Use the supplied 1/4" Hex nuts to secure the switch expander(s) to the dead front panel.

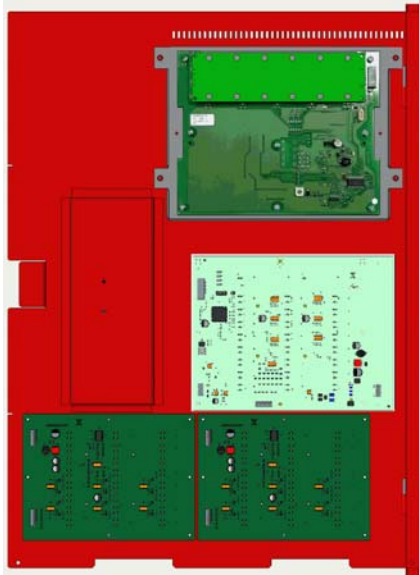
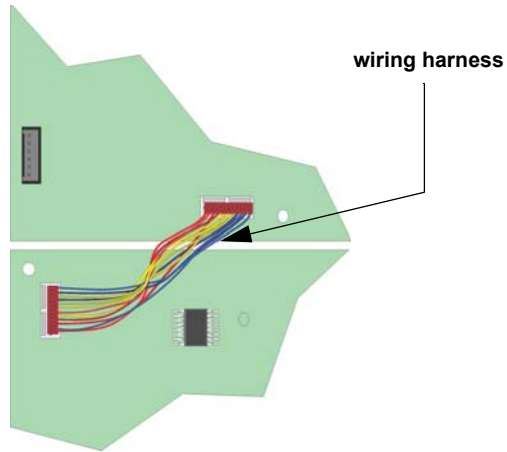


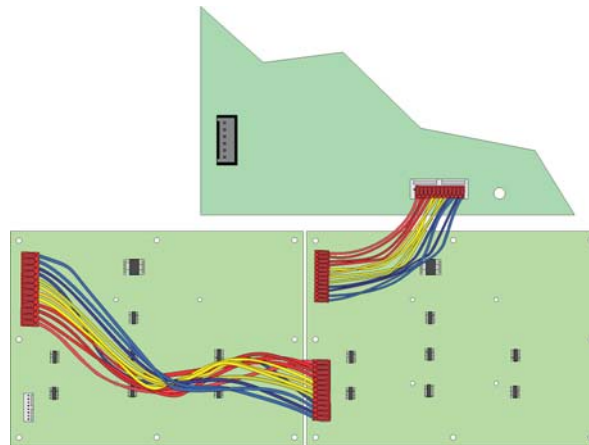
Figure 1 FCP-300ECS and FCP-2100ECS Mounting Location for the FIK-SW24

### 3 Wiring

1. Connect one end of the supplied wiring harness (PN 130398) to the FIK-RVM and connect the other end of the wiring harness to the FIK-SW24 as shown in Figure 2.
2. For the FCP-21000ECS, connect the one end of the supplied wiring harness (PN 130398) to the FIK-RVM and connect the other end of the wiring harness to the FIK-SW24.
3. Then connect one FIK-SW24 to the other FIK-SW24 as shown in Figure 3.

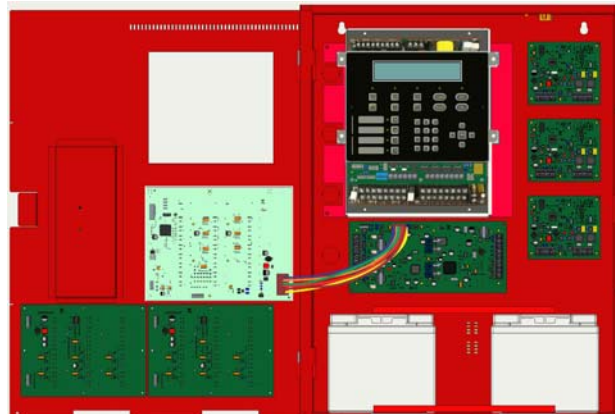


**Figure 2 Wiring Harness Connection for the FCP-300ECS**



**Figure 3 Wiring Harness Connection for the FCP-2100ECS**

4. Restore the AC power.
5. Reconnect the backup batteries.
6. For the FCP-300ECS or FCP-2100ECS, using the FIK-NVCM, connect the FIK-NVCM (P3) connector to the FIK-EMG touchpad. See Figure 4 to properly connect the FIK-NVCM to the FIK-EMG.



**Figure 4 FIK-NVCM Connection to the FIK-EMG Touchpad**