



FIKE CORPORATION
704 SW 10th Street
Blue Springs, MO 64015
www.fike.com

The FIK-BB-2 cabinet provides mounting space for two Fike multi-modules.



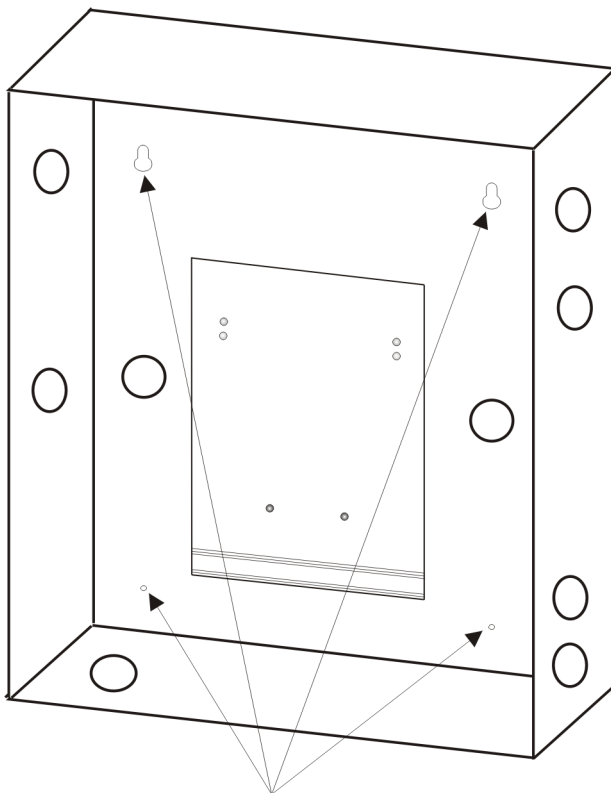
NOTE: Installation and wiring of this device must be done in accordance with NFPA 72 and local ordinances.

1 Specifications

- Mounting: surface
- Dimensions: 12.5" W x 15.25" H x 3.0" D
(31.8cm W x 38.7cm H x 7.6cm D)
- Weight: 6.25lbs (2.8kg)

2 Mounting

Mount the FIK-BB-2 using the four mounting holes as shown below in a dry, indoor location.



Mounting Holes
Figure 1 Mounting the FIK-BB-2

**FOR SYSTEM/PRODUCT DOCUMENTATION INCLUDING
INSTALLATION, OPERATION, AND MAINTENANCE, SCAN
QR CODE OR ENTER URL PROVIDED.**



<http://www.fike.com/06-912>

FIK-BB-2

Product Installation Document

PN LS10300-001FK-E:A 2/4/2021 ECN: 151526

3 Installing Modules

The mounting process for Fike multi-modules is described below. All mounting hardware is included with Fike multi-modules.

To install Fike Multi-Modules in the FIK-BB-2

1. Insert the extended lip of the module into the rear slot on the mounting plate. Figure 2 illustrates steps 1 through 3.

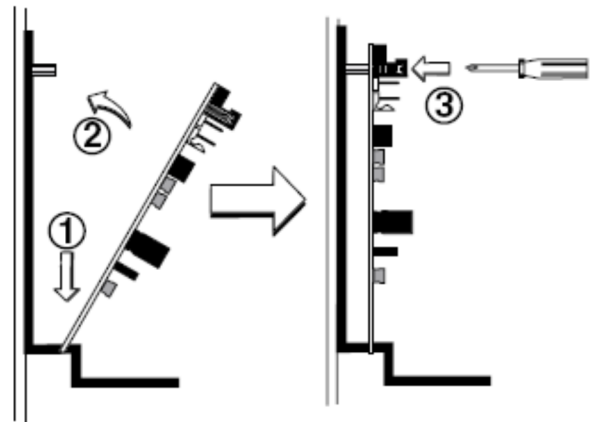


Figure 2 Installing the First Fike Multi-Module

2. Carefully swing the lower edge of the board toward the back of the cabinet until it touches the two standoffs.
3. Go to step 5 if you are mounting a second module into the FIK-BB-2. If mounting only one module, align two 4-40 screws with the two standoffs and tighten.
4. Address and wire the module as described in the compatible fire alarm control panel installation manual.
5. Align the long standoffs with the short standoffs and tighten.
6. Insert the lip of the second module board into the front slot on the mounting plate. Figure 3 illustrates steps 6 through 8.

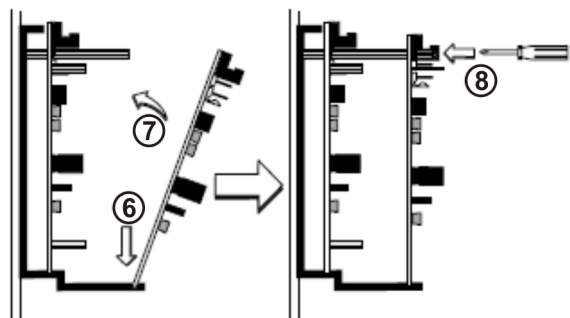


Figure 3 Installing the Second Fike Multi-Module

7. Carefully swing the module board toward the back of the cabinet until it touches the 1.25" (31.75 mm) standoffs installed on the rear module.
8. Align two 4-40 screws with the two standoffs and tighten.
9. Address and wire the module as described in the compatible fire alarm control panel installation manual.