

AMBIENT TEMPERATURE REFERENCING SOURCE



Features

- Reference radiator with high emissivity ideal for IR camera based fever screening applications
- Integrated 16-bit digital temperature sensor with 0.1°C accuracy
- Mounting bracket – adjustable for either ceiling or wall mounting
- Plug-and-play installation with 20 m [65.6 ft] cable and PI 400i suitable PIF-connector

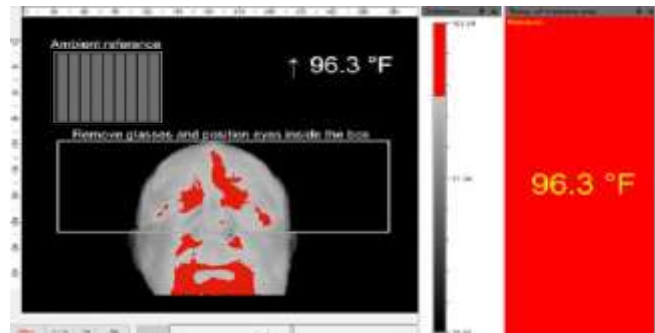
Ordering

Part Number	Description
28-0060	Ambient temperature reference source, incl. 16-bit temperature sensor with 0.1°C accuracy, 20 m [65.6 ft] connection cable with PIF plug for connecting to PI 400i camera, mounting bracket for wall and ceiling mount

Description

To improve the specified camera accuracy of the PI 400i camera (P/N 28-0024), a reference source with a high emissivity and a stable and known temperature must be positioned in the scene proximate to the subject to be scanned. The ambient referencing source is equipped with a temperature probe with $\pm 0.1^\circ\text{C}$ accuracy.

By integrating this highly accurate reference signal to the PIX Connect software, the camera uncertainties resulting from device adjustment, ambient temperature drift and short term stability can be reduced down to a system accuracy of $\pm 0.5^\circ\text{C}$.



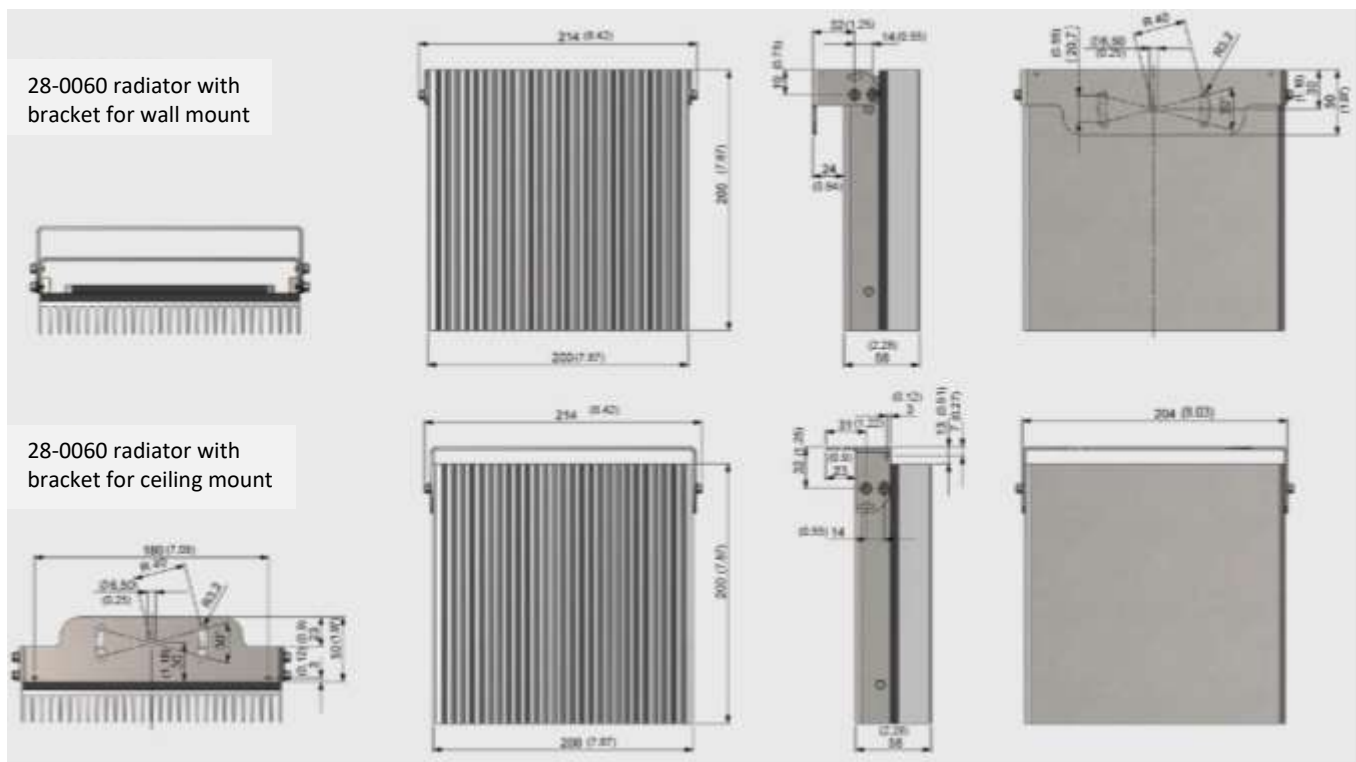
The PIX Connect software is referencing the entire IR image to the known temperature of the Ambient reference which is placed inside the FOV.

Specifications

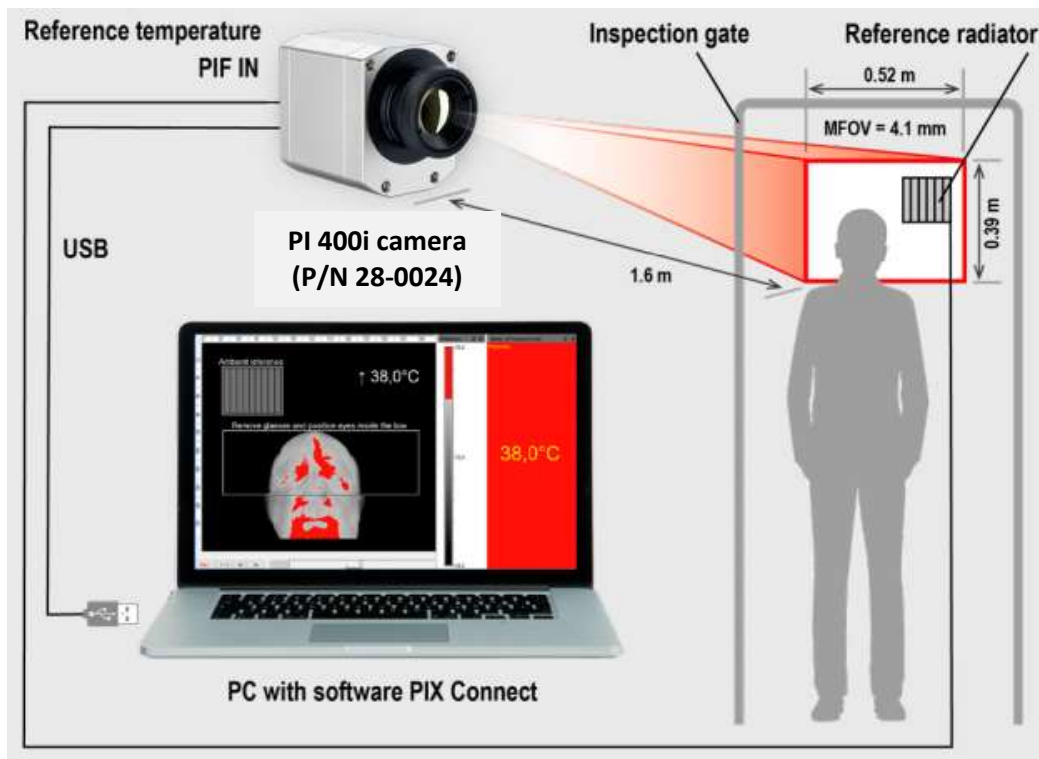
Dedicated temperature range	30°C (86°F) to 40°C (104°F)
Emissivity	0.95 \pm 0.02 (for 8 - 14 μm)
Temperature probe (integrated)	Digital 16-bit temperature sensor
Accuracy of temperature probe	$\pm 0.1^\circ\text{C}$ (25°C [77°F] to 50°C [122°F]) / drift: 0.0073°C
Accuracy of 28-0024 with 28-0060	$\pm 0.5^\circ\text{C}$ [0.9°F] (T _{Amb} 18°C [64°F] to 33°C [91°F]) (T _{Obj} 30°C [86°F] to 40°C [104°F])
Interface	5-pin connector fitting to PIF-connector of 28-0024 cameras
Dimensions	20 cm x 20 cm x 8.2 cm (7.87 in x 7.87 in x 3.23 in)
Weight (with mtg. bracket / without cable)	2.5 kg (5.5 lbs)

This document is only intended to be a guideline and is not applicable to all situations. Information is subject to Fike's full disclaimer at <http://www.fike.com/disclaimer>.

Dimensions



Ambient Temperature Referencing Installation



This document is only intended to be a guideline and is not applicable to all situations.
Information is subject to Fike's full disclaimer at <http://www.fike.com/disclaimer>.