



CIE-A-400 LOOP CARD 540-0003

Unit 31 Springvale Industrial Estate | Cwmbran NP44 5BD, United Kingdom | +44 (0) 1633 865 558

General description.

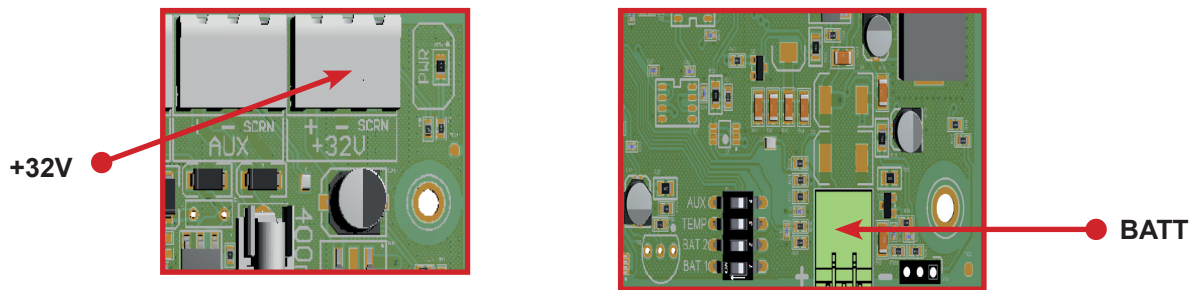
The CIE-A-400 loop card allows a CIE-A-400 1 Loop panel to be converted to a 2 loop panel giving an extra 200 device capability.

Installation.

The panel **must be completely powered down** before this card is fitted.

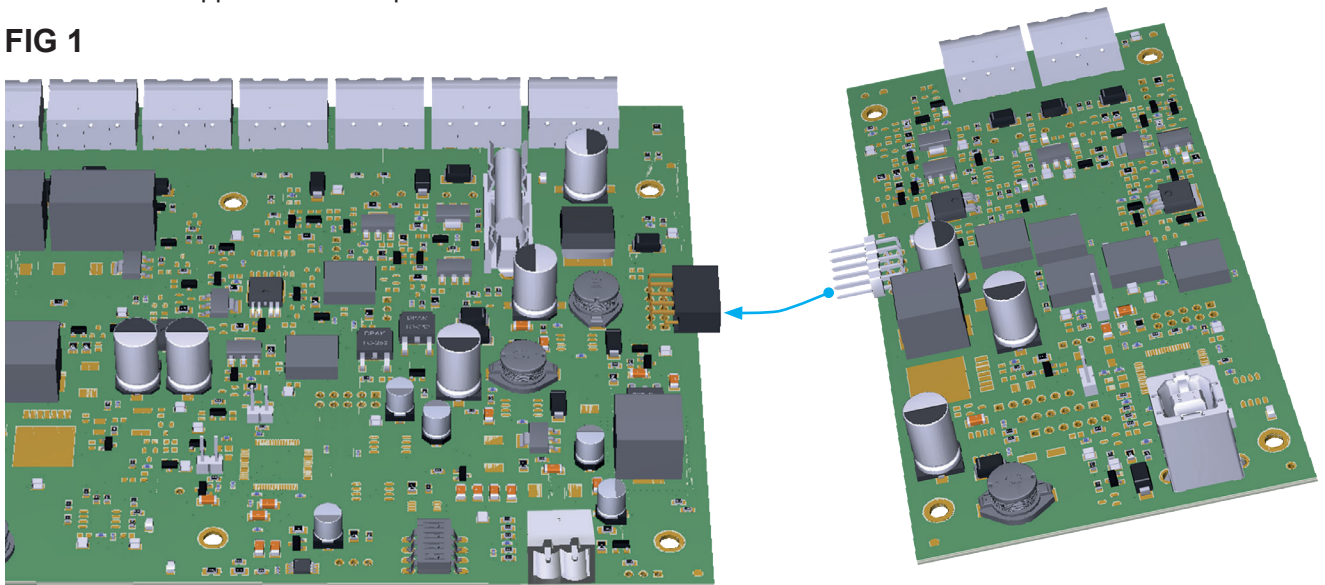
1. Open the door moulding from the unit by unscrewing the two right hand fixing screws under the door flap.
2. Unplug the +32V connector and the battery connector, As shown below.

Note: Immediately prior to handling any PCB's or other static sensitive devices, it is essential to ensure that a personal connection to earth is made with an anti-static wrist-strap or similar apparatus.



3. Slide the pins on the loop card into the connector on the backboard as shown in Fig 1. Then use the 4 M3X6 screws supplied to fix into place.

FIG 1



The panel will automatically identify when Loop 2 has been connected on power up.

4. To switch on the Loop Card once it has been installed go to Panel Engr Menu:

9. Loop Controls > 7. Loops ON / OFF.

Using the Up & Down keys to Navigate between Loops and the Enter key to switch **ON or OFF**.

