

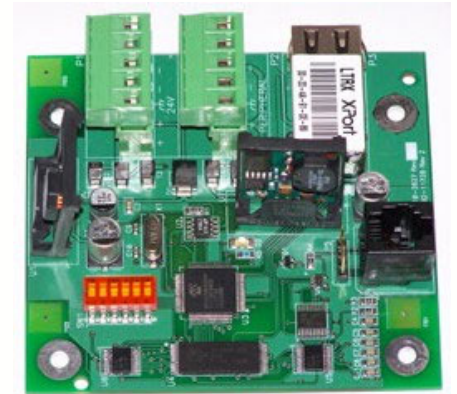
## ETHERNET MODULE

The Ethernet Module is an ancillary device that connects to a compatible Fike fire alarm control unit (FACU) via its RS485 peripheral bus connection. The module provides a means to connect the FACU to the Internet (i.e., local or wide area). This connection enables the FACU to supervise (receive history events from) up to 127 remote panels or transmit its event history to a single supervising (monitoring) FACU. The control panels can be located in different buildings or remote sites. Event status between Ethernet Modules is one-way.

The Ethernet Module is NOT to be used to network control panels located in a single building together or as a primary means of annunciation for single building use.

### FEATURES

- It can be located up to 4000 feet (1219 m) from the FACU.
- It can be powered by the FACU or by a regulated 24 VDC, battery-backed, power-limited power supply listed for fire protective signaling use.
- Communicates on the FACU's RS485 peripheral bus.
- Status LED to provide an instant indication of module communication.
- Must be programmed with a static IP address, subnet mask, and default gateway (provided by the site's IT personnel) using the Lantronix software utility.
- Ability to operate as a proprietary, protected premises unit (PPU) and proprietary receiving unit.
- Compatible with the Cheetah® Xi, Cheetah Xi 50, CyberCat® 254, CyberCat 1016, and CyberCat 50 control panels, Firmware versions 3.00 and higher.
- Mounts within the control panel enclosure or remotely mounted in a custom enclosure purchased separately.



#### APPROVALS:

- UL
- FM
- CSFM
- COA

*Refer to the applicable agencies web site for approval file numbers.*



## SPECIFICATIONS

<b>OPERATING TEMPERATURE</b>	32°F to 120°F (0°C to 49°C)
<b>POWER INPUT</b>	15 to 30 VDC (from the host FACU or a regulated 24 VDC, battery-backed, power-limited power supply listed for Fire Protective Signaling Use.)
<b>INPUT CURRENT</b>	97mA (standby), 134mA (alarm)
<b>PANEL COMMUNICATION</b>	RS485 peripheral bus, 4000 ft (1219 m) maximum distance from the FACU.
<b>ETHERNET COMMUNICATION</b>	RJ45 jack – 10 Base-T LAN connection (UL compliant installation requires a router, switch, or hub to be located in the same room as the Ethernet module.)
<b>PANEL COMMUNICATION STATUS LED</b>	Indicates module communication with host FACU. Blinks every 3 to 5 seconds under normal conditions. Blinks rapidly if communication with the panel is lost.
<b>MOUNTING OPTIONS</b>	Mounted within the FACU enclosure (Cheetah Xi or CyberCat 254/1016) or mounted in a remote enclosure (P/N 10-074).

## ORDERING

<b>PART NUMBER</b>	<b>Description</b>
10-074	Ethernet module assembly and mounting enclosure
10-2627	Ethernet module (included in 10-074)
40-1023	Surge Suppressor, 24 VDC
40-1027	Surge Suppressor, RS485
40-1031	Surge Suppressor, RJ45
<b>Spare part (items included in the 10-074 assembly).</b>	
70-2043	Mounting plate (black finish)
02-4494	Enclosure back-box (red finish)
02-11767	Generic Fike label for mounting plate
02-1361	6-32 hex nut (qty. 4)
02-3846	1-1/4" M/F standoff (qty. 4)
02-4558	#6 x 1/2" Phillips screw (qty. 4)

PRODUCT APPLICATION

A digital alarm communicator/transmitter (DACT) can be connected to the monitoring FACU to provide a single point of communication for all panels to the Central or Remote receiving station.

