

# EXP™ DETECTOR INPUT BOARDS

## DESCRIPTION

The Detector Input Boards are optional components that can be added to the EXP panel using the standoffs provided on the Main Controller and the Field Connection Board. Each Detector Input Board provides a connection point for up to five input devices (i.e., 4-20mA detectors, contact closure devices, or burst indicators), one per circuit, any combination. Up to two Detector Input Boards can be installed in a single EXP panel for a maximum of ten detector inputs per panel. For system activation, at least one Detector Input Board must be installed per EXP system (stand-alone panel or networked panels).

### Approvals

- Factory Mutual (FM)
- Conformité Européenne (CE)
- Atmosphères Explosibles (ATEX)

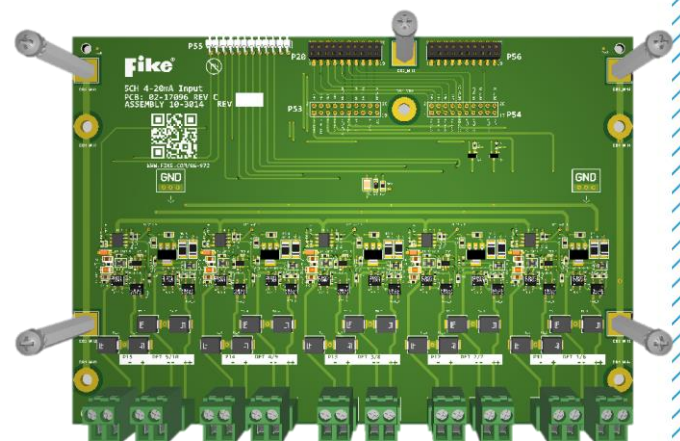
*For exact certification listings, please reference the respective agency website.*

## BOARD VERSIONS

The Detector Input Boards come in two versions, as described below.

### Class A/B (P/N 10-3014)

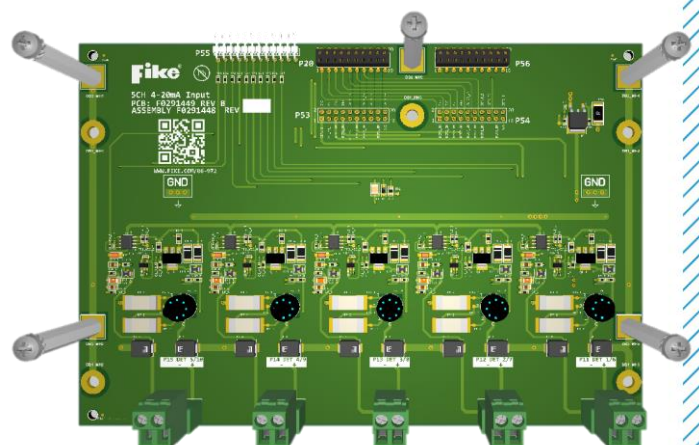
This board provides five non-intrinsically safe detector input circuits that can be wired NFPA Class A or B.



P/N 10-3014

### Class B (P/N F0291448)

This board provides five non-intrinsically safe detector input circuits that can only be wired NFPA Class B. A three-position rotary switch is provided for each input circuit. The switch setting must be set according to the type of input device that will be connected to the circuit.



P/N F0291448

## SPECIFICATIONS

<b>Compatible devices</b>	4-20mA devices <sup>1</sup> Contact closure-type devices <sup>2</sup> Burst indicator devices <sup>2</sup>
<b>Supervision</b>	Power-limited and supervised
<b>Circuit pathway</b>	Class B (1.5K ohm EOL, P/N F0292837) or Class A
<b>Output voltage</b>	19.9 – 27.6 VDC
<b>Current</b>	50 mA maximum
<b>Resistance</b>	30Ω maximum
<b>Wire type</b>	Twisted shielded pair with drain wire (LiYCY cable or Belden 9318, 9316 preferred)
<b>Wire gauge</b>	20AWG minimum to 16AWG maximum (0.52mm <sup>2</sup> min. to 1.31mm <sup>2</sup> max.)
<b>Mounting</b>	Mounts to the Main Controller and Field Connection Board.

<sup>1</sup> Compatible with all Detector Input boards.

<sup>2</sup> Compatible with Class B Non-Intrinsically Safe (P/N F0291448) Detector Input Board.

## ORDERING

The Detector Input Board(s) is ordered separately to meet the project requirements.

PART NUMBER	DESCRIPTION
10-3014	Class A or B, Non-Intrinsically Safe Detector Input Board
F0291448	Class B, Non-Intrinsically Safe Detector Input Board

NOTE: Mounting hardware is included with each board.