

ACTUATOR FIELD MODULE (AFM) MOUNTING BRACKETS

The AFM mounting brackets provide a means to mount the AFM directly to the explosion protection component it serves. In most cases, one or more of the bracket components identified below are used in tandem to facilitate the attachment of the AFM to the various Fike explosion protection components. Unless indicated otherwise, the brackets must be ordered separately to suit the specific project requirements.

NOTE: The F0292627 and F0293929 Cast aluminum AFM enclosures CAN NOT be used with the AFM mounting brackets. These enclosures must be mounted separately due to their weight.

AFM Box Mount (P/N F0293968)

The Box Mount provides mounting holes to facilitate its attachment to the back of the associated AFM enclosure (i.e., P/N 06-16910, 06-16911, F0292626, and F0290389). Mounting hardware for attaching the mount to the enclosure is not included. The Box Mount is included as part of the Box Mount/Adapter Assembly (P/N F0295436).

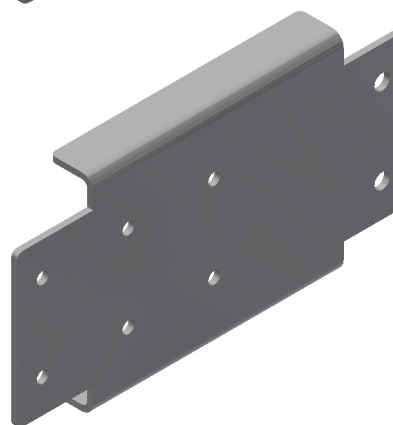
The Box Mount provides four threaded standoffs to facilitate the attachment of the Box Adapter (P/N F0294027), also included in the Box Mount/Adapter Assembly (P/N F0295436). Attachment hardware is included in the assembly.



AFM Box Adapter (P/N F0294027)

The Box Adapter provides mounting holes to facilitate attachment to the Box Mount (P/N F0293968). Hardware for attaching the adapter to the Box Mount is included in the assembly. The Box Adapter is included as part of the Box Mount/Adapter Assembly (P/N F0295436).

The Box Adapter provides two holes to facilitate the attachment of the Box Adapter (P/N F0294027) directly to the explosion protection component or one of the flange brackets detailed below. Attachment hardware is included in the assembly.



Flange Bracket (P/N F0294569)

The Flange Bracket is used in conjunction with the AFM Box Mount/Adapter Assembly (P/N F0295436) to facilitate the attachment of the AFM to any Fike explosion protection component that utilizes ANSI150 2, 3, 4 inch or ANSI300 4 and 6 inch flanges (i.e., HRDs, EIVs*, and EIPVs).

The Flange Bracket provides two slotted mounting holes to facilitate its attachment to the backside of the explosion protection components mating flange using the existing mounting studs and hardware.

Four holes are provided in the Flange Bracket to facilitate the attachment of the AFM Box Adapter (P/N F0294027). The hole configurations enable the AFM to be installed so it is oriented parallel to or perpendicular to the explosion protection component.

*Retrofit applications only. New EIVs are equipped with P/N F0294928 or F0294026.

Flange Bracket (P/N F0294584)

The Flange Bracket is used in conjunction with the AFM Box Mount/Adapter Assembly (P/N F0295436) to facilitate the attachment of the AFM to any Fike explosion protection component that utilizes ANSI150 6, 8, 10, and 12 inch flanges (i.e., EIPVs).

The Flange Bracket provides two slotted mounting holes to facilitate its attachment to the backside of the explosion protection components mating flange using the existing mounting studs and hardware.

Four holes are provided in the Flange Bracket to facilitate the attachment of the AFM Box Adapter (P/N F0294027). The hole configurations enable the AFM to be installed so it is oriented parallel to or perpendicular to the explosion protection component.

Flange Bracket (P/N F0294585)

The Flange Bracket is used in conjunction with the AFM Box Mount/Adapter Assembly (P/N F0295436) to facilitate the attachment of the AFM to any Fike explosion protection component that utilizes ANSI150 14, 16, 18, 20, and 24-inch flanges (i.e., EIVs*).

The Flange Bracket provides two slotted mounting holes to facilitate attachment to the backside of the explosion protection components mating flange using the existing mounting studs and hardware.

Four holes are provided in the Flange Bracket to facilitate the attachment of the AFM Box Adapter (P/N F0294027). The hole configurations enable the AFM to be installed so it is oriented parallel to or perpendicular to the explosion protection component.

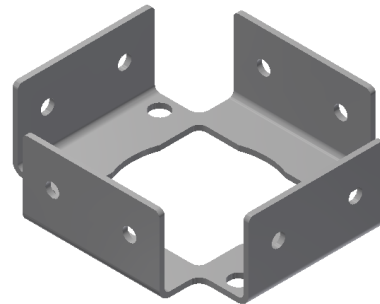
*Retrofit applications only. New EIVs are equipped with P/N F0294928 or F0294026..



EIV Flange Bracket (P/N F0294928 or F0294026)

The EIV Flange Bracket is a new component incorporated into all new EIVs. The bracket facilitates the attachment of the AFM Box Mount/Adapter Assembly (P/N F0295436) to the base of the EIVs piston cylinder. Bracket P/N F0294928 is provided on 2, 3, 4, 6, 8, and 10-inch EIVs. P/N F0294026 is provided on 12, 14, 16, 18, 20 and 24-inch EIVs.

The Flange Bracket provides two mounting holes on each side to facilitate the attachment of the AFM Box Mount/Adapter Assembly (P/N F0295436).



7 Inch Diameter, SRD Container Bracket (P/N F0293949)

The updated SRD Container Bracket provides two mounting holes on each side to facilitate the attachment of the AFM Box Adapter (P/N F0294027).

Existing AFM container brackets must be replaced with the F0293949 container bracket to facilitate the attachment of the AFM.



AFM ATTACHMENT TO STANDARD RATE DISCHARGE (SRD) CONTAINERS

Fike has modified the mounting bracket (P/N F0293949) for the Standard Rate Discharge (SRD) container to enable the AFM to be mounted to the mounting bracket. The AFM cannot be mounted to existing SRD mounting brackets and must be remotely mounted.

Use the following instructions to mount the AFM to the SRD container's mounting bracket (See Figure 1).

Step 1. Secure the AFM Box Mount (P/N F0293968) to the back of the AFM enclosure using the four mounting holes provided in the AFM enclosure. The mounting hardware is not included.

NOTE: The AFM Mounting Bracket (P/N F0294027) allows the AFM Adapter Bracket (P/N F0293970) to be mounted horizontally or vertically to suit project requirements. The preferred orientation is horizontal, with the hinge of the AFM enclosure facing up. This orientation protects from inclement weather should the enclosure door be left open.

Step 2. Secure the AFM Box Adapter (P/N F0294027) to the flange of the SRD mounting bracket using the M8 hardware provided.

Step 3. Insert the threaded studs provided on the AFM Box Mount (P/N F0293968) into the mounting holes provided on the AFM Box Adapter (P/N F0294027); then secure using the M6 nuts and lock-washer provided.

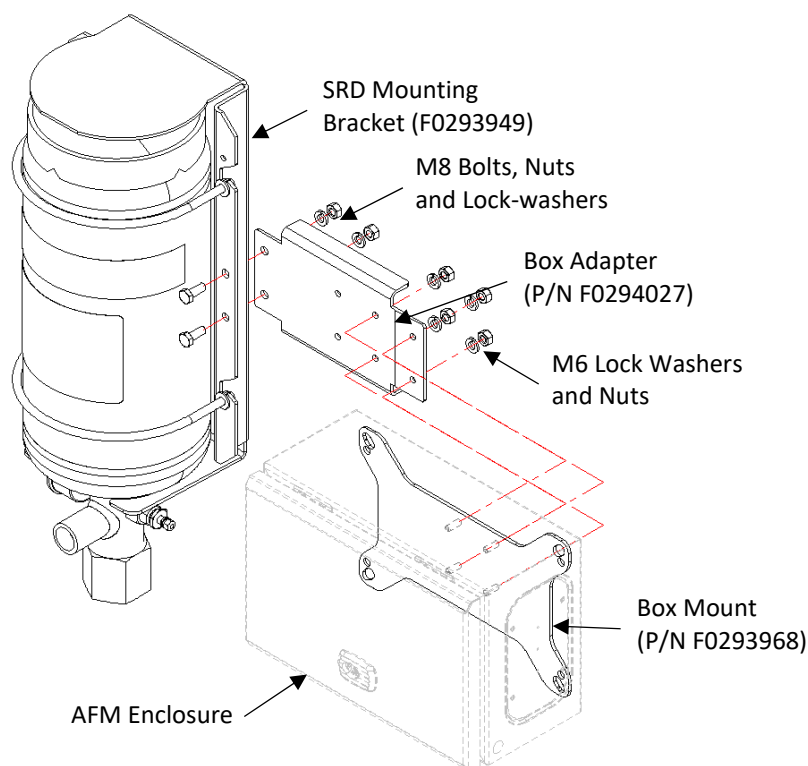


Figure 1 – AFM Attachment to SRD Container

AFM ATTACHMENT TO HIGH-RATE DISCHARGE (HRD) CONTAINERS

The AFM Flange Brackets (P/N F0294569, F0294584, and F0294585) are secured to the back side of the SRD bolting flange using the HRD mounting hardware.

Use the following instructions to mount the AFM to the HRD container (See Figures 2 and 3).

- Step 1. Secure the AFM Box Mount (P/N F0293968) to the back of the AFM enclosure using the four mounting holes provided in the AFM enclosure. The mounting hardware is not included.

NOTE: The AFM Mounting Bracket (P/N F0294027) allows the AFM Adapter Bracket (P/N F0293970) to be mounted horizontally or vertically to suit project requirements. The preferred orientation is horizontal, with the hinge of the AFM enclosure facing up. This orientation protects from inclement weather should the enclosure door be left open.

- Step 2. Secure the Flange Bracket to the HRD flange using the HRD mounting hardware.
- Step 3. Secure the AFM Box Adapter (P/N F0294027) to the HRD Flange using the M8 hardware provided.
- Step 4. Insert the threaded studs provided on the AFM Box Mount (P/N F0293968) into the mounting holes provided on the AFM Box Adapter (P/N F0294027); then secure using the M6 nuts and lock-washer provided.

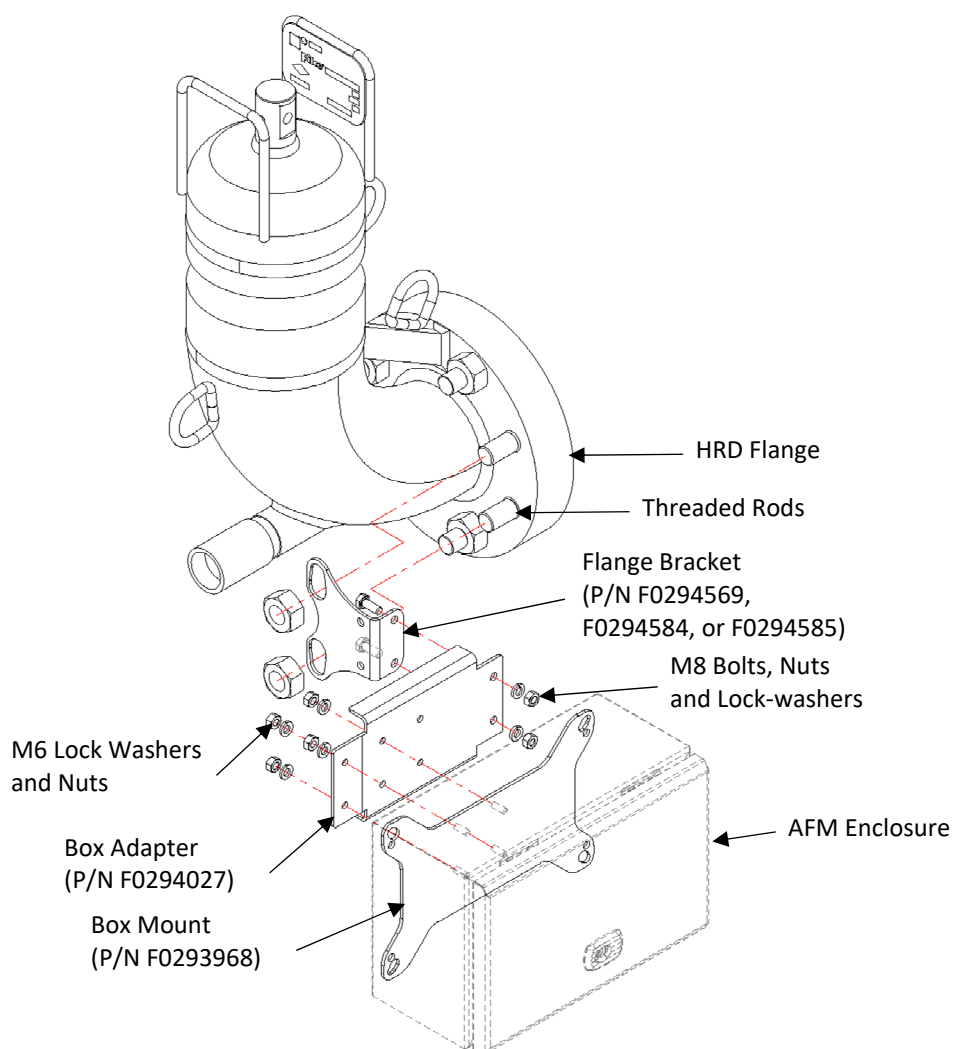


Figure 2 – AFM Attachment to HRD Container, Parallel Mount

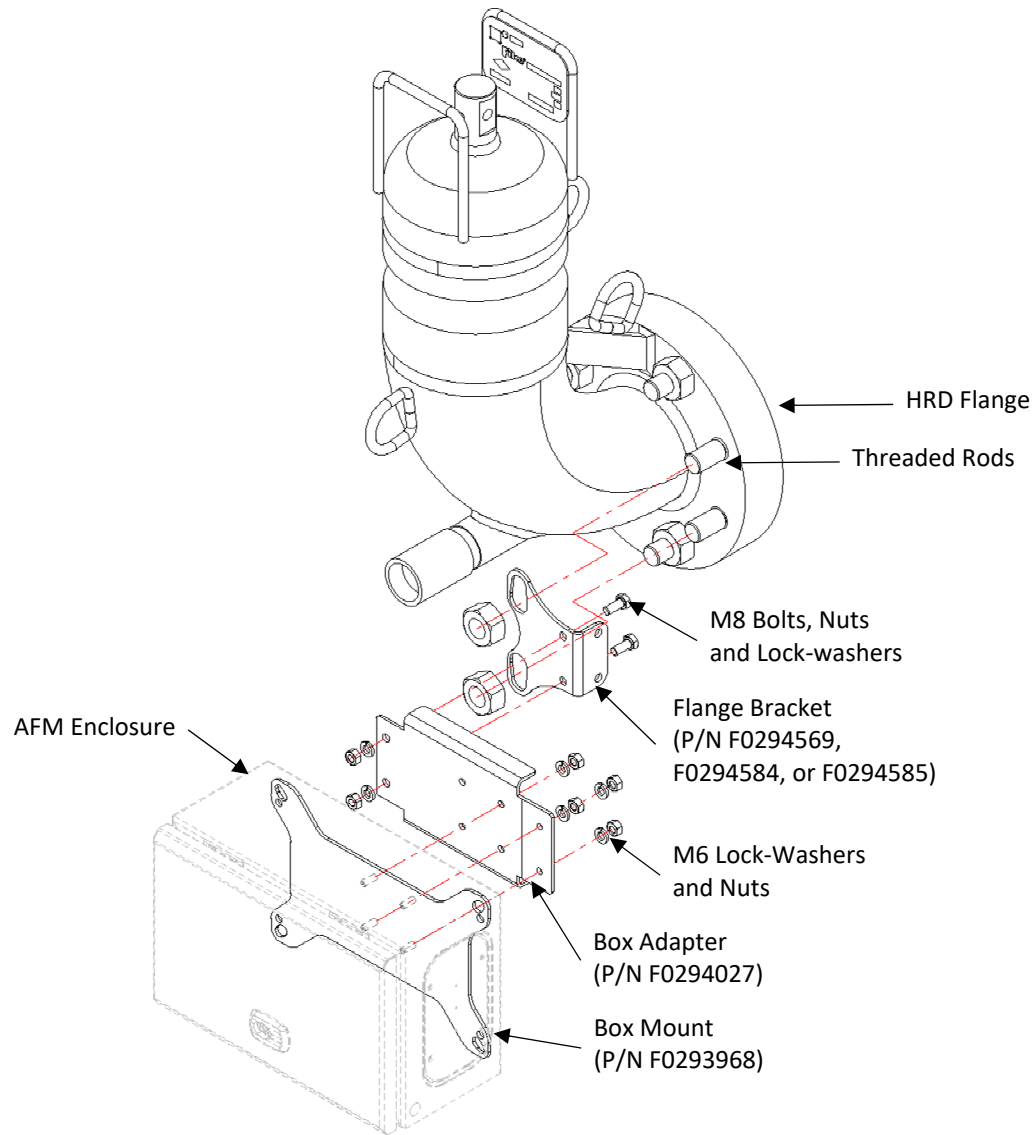


Figure 3 – AFM Attachment to HRD Container, Perpendicular Mount

AFM Attachment to New Explosion Isolation Valves (EIV)

New Fike Explosion Isolation Valves (EIVs) have been updated to add a flange bracket (P/N F0294928 or F0294026) to the base of the piston cylinder, depending on the valve size. Each bracket is equipped with mounting holes on each side to facilitate the attachment of the AFM Mounting Bracket (F0294027) to any side of the valve.

Use the following instructions to mount the AFM to the EIV (See Figure 4).

- Step 1. Secure the AFM Box Mount (P/N F0293968) to the back of the AFM enclosure using the four mounting holes provided in the AFM enclosure. The mounting hardware is not included.

NOTE: The AFM Mounting Bracket (P/N F0294027) allows the AFM Adapter Bracket (P/N F0293970) to be mounted horizontally or vertically to suit project requirements. The preferred orientation is horizontal, with the hinge of the AFM enclosure facing up. This orientation protects from inclement weather should the enclosure door be left open.

- Step 2. Secure the AFM Box Adapter (P/N F0294027) to the EIV Flange Bracket using the M8 hardware provided.
- Step 3. Insert the threaded studs provided on the AFM Box Mount (P/N F0293968) into the mounting holes provided on the AFM Box Adapter (P/N F0294027); then secure using the M6 nuts and lock-washer provided.

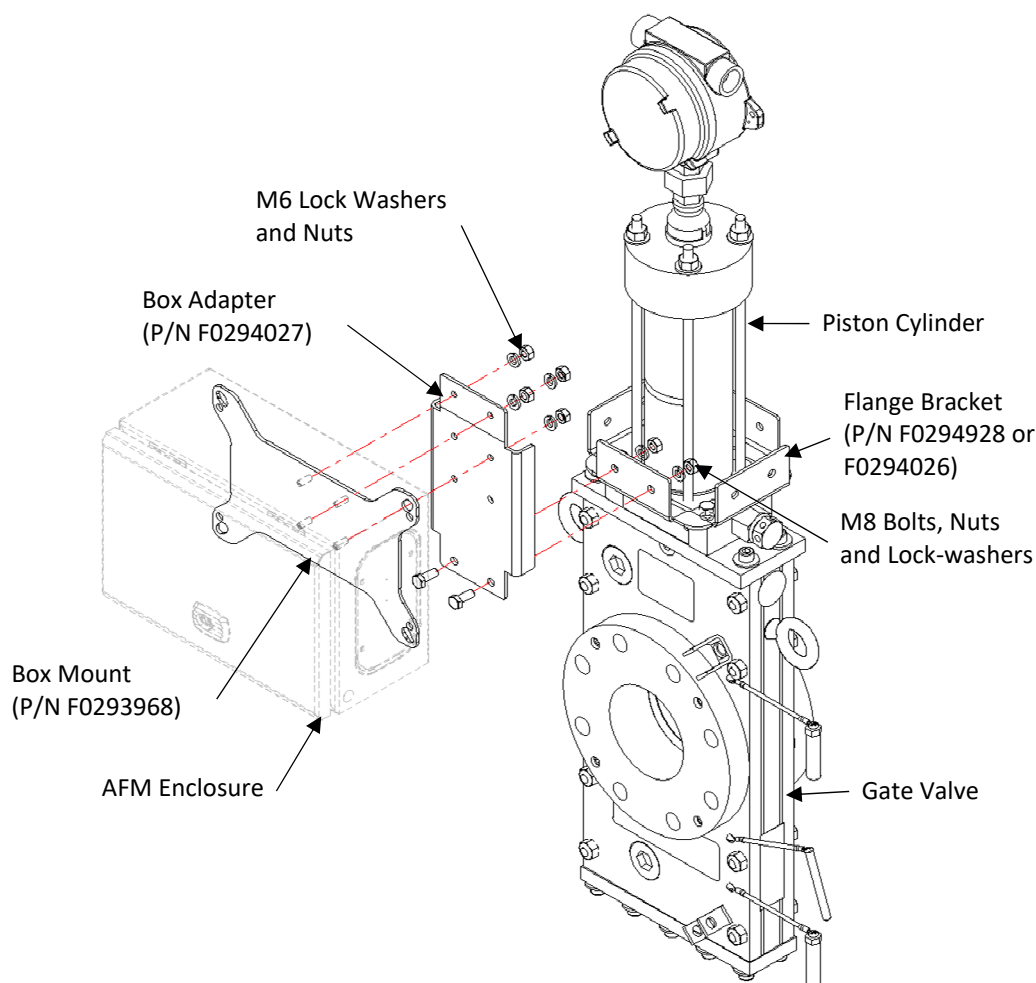


Figure 4 – AFM Attachment to New EIVs Equipped with Flange Bracket

AFM Attachment to Existing Explosion Isolation Valves (EIVs) and Explosion Isolation Pinch Valves (EIPVs)

The AFM Flange Brackets (P/N F0294569, F0294584, and F0294585) are secured to the back side of the EIV or EIPV bolting flange using the components mounting hardware.

Use the following instructions to mount the AFM to the EIV or EIPV (See Figures 5 and 6).

Step 1. Secure the AFM Box Mount (P/N F0293968) to the back of the AFM enclosure using the four mounting holes provided in the AFM enclosure. The mounting hardware is not included.

NOTE: The AFM Mounting Bracket (P/N F0294027) allows the AFM Adapter Bracket (P/N F0293970) to be mounted horizontally or vertically to suit project requirements. The preferred orientation is horizontal, with the hinge of the AFM enclosure facing up. This orientation protects from inclement weather should the enclosure door be left open.

Step 2. Secure the Flange Bracket to the bolting flange using the component mounting hardware.

Step 3. Secure the AFM Box Adapter (P/N F0294027) to the Flange Bracket using the M8 hardware provided.

Step 4. Insert the threaded studs provided on the AFM Box Mount (P/N F0293968) into the mounting holes provided on the AFM Box Adapter (P/N F0294027); then secure using the M6 nuts and lock-washer provided.

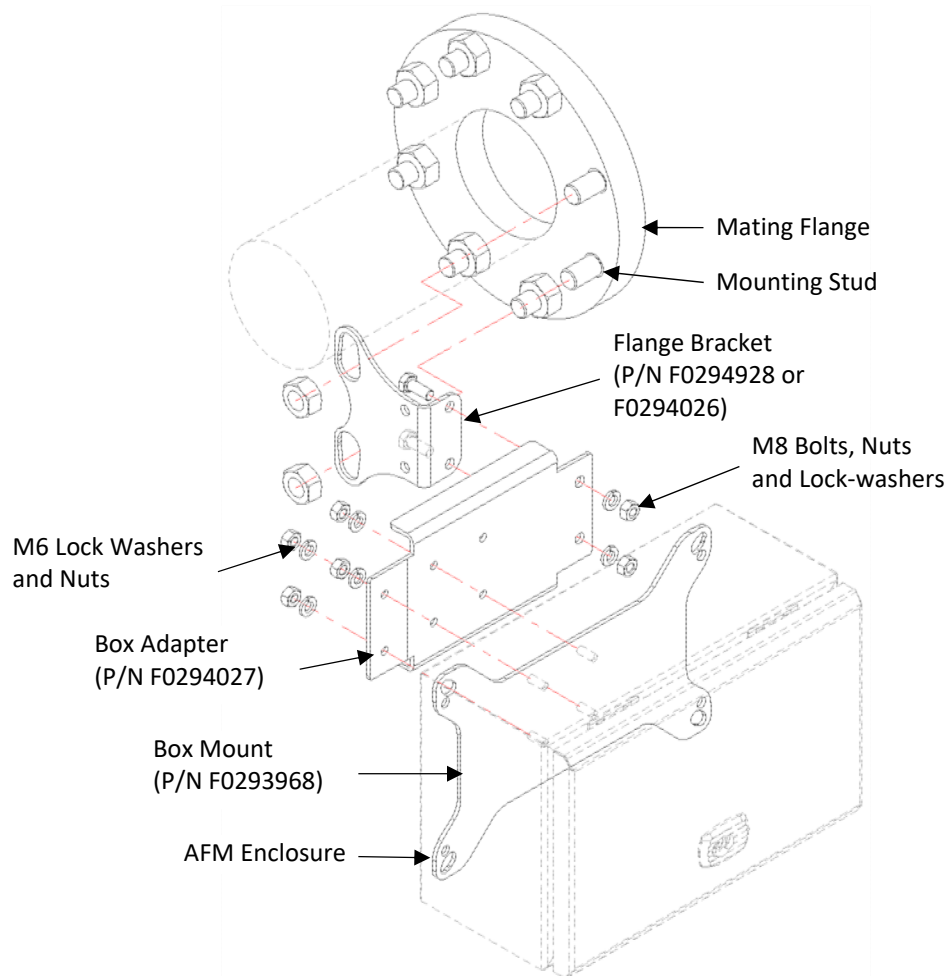


Figure 5 – AFM Attachment to Existing EIVs and EIPVs, Parallel Mount

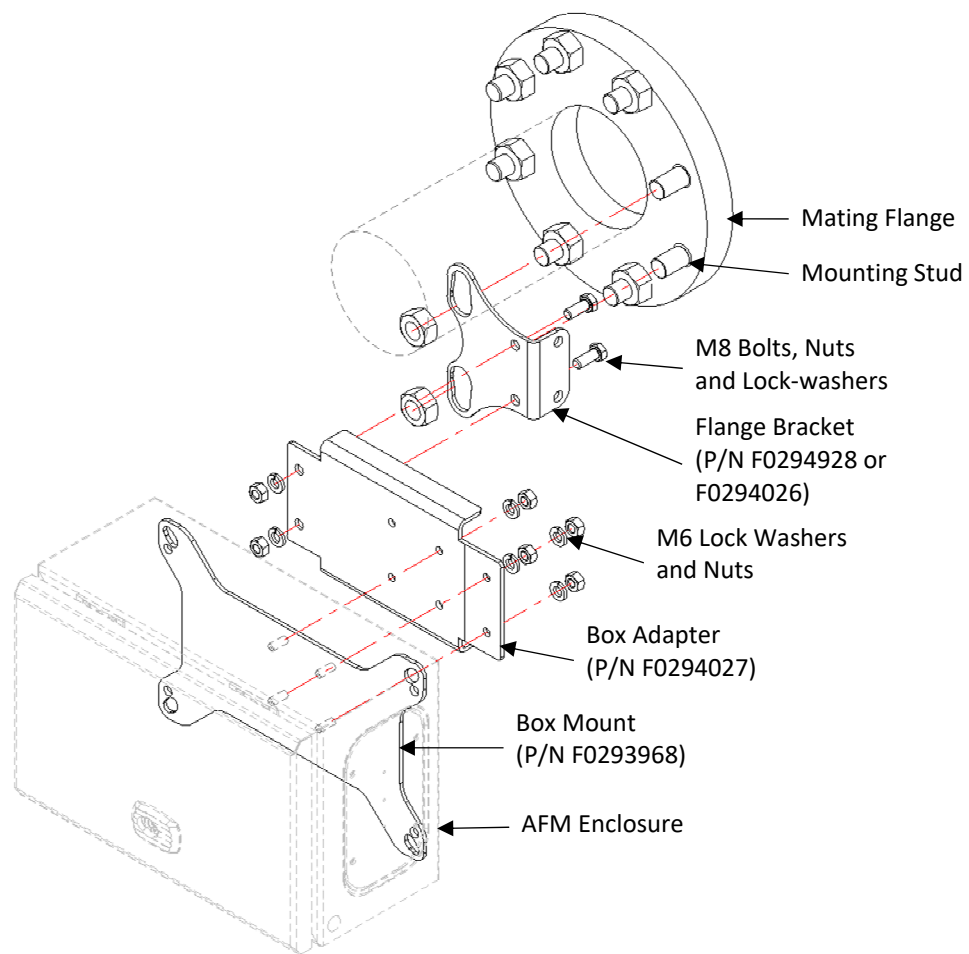


Figure 6 – AFM Attachment to Existing EIVs and EIPVs, Perpendicular Mount

Intentionally left blank.