

PRESSURE DETECTOR MOUNTING CONFIGURATIONS

APPLICATION

The ceramic pressure detector can be installed in several configurations. Rigid, flush, and flex mount are available depending on the application.

Rigid Mount Kit:

Typically used when the detector is installed on a process vessel that requires a hygienic process connection.

Fike P/N	Description
E61-063-1	Rigid Mount Kit for EP Detector w/ 2" Tri-Clamp 304 SST, PTFE Gasket, 316L SST Detector Flange
E61-063-2	Rigid Mount Kit for EP Detector w/ 2" Tri-Clamp 304 SST, Viton Gasket, 316L SST Detector Flange
E61-063-5	Rigid Mount Kit for EP Detector w/ 2" Tri-Clamp 304 SST , PTFE Gasket, HC276 Detector Flange

- Process temperature range based on detector rating.
- Purge spool kit available (see below).



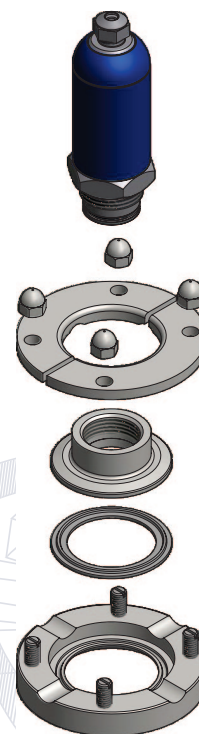
Rigid Mount Kit
Detector sold separately.

NA® Connect Flush Mount Kit:

Typically used when the detector is installed on surfaces where the detector is required to be flush with the inside of the process.

Fike P/N	Description
E61-065-1	NA® Connect EP Detector Kit w/ PTFE Gasket, 316L SST Flange
E61-065-2	NA® Connect EP Detector Kit w/ Viton Gasket, 316L SST Flange

- Process temperature range based on detector rating.



NA® Connect Flush Mount Kit
Detector sold separately.

FLEX MOUNT KITS

Flex Mount Kit:

Typically used when the detector is installed on a vibrating process vessel.

Fike P/N	Description
E61-061	Flex Mount Kit for EP Detector with 2" Tri-Clamp 304 SST, PTFE Gasket, 316L SST Detector Flange, 12" LG (305 mm) PVC Flex Hose, Mounting Bracket, 10" LG (254 mm) Neoprene Mounting Strap

Process Temperature Range: 0 to 175°F (-20 to 80°C).

Hi-Temp Flex Mount Kit:

Typically used when the detector is installed on a vibrating process vessel or a high temperature process vessel.

Fike P/N	Description
E61-062	Hi-Temp Flex Mount Kit for EP Detector with 2" Tri-Clamp 304 SST, PTFE Gasket, 316L SST Detector Flange, 18" LG (457 mm) Hi-Temp Flex Hose, Mounting Bracket, 10" LG (254 mm) Neoprene Mounting Strap

Process Temperature Range: 0 to 450°F (-20 to 230°C).



Flex Mount Kit
Detector sold separately.

Hi-Temp Flex Mount Kit
Detector sold separately.

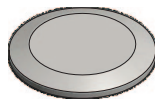
PROCESS CONNECTORS

The selection of a Process Connector is determined by temperature, CFM, process turbulence, media conglomeration, and detector mounting orientation.

Weld Ferrules:

Weld ferrules are typically used in applications that are installed directly on the process vessel.

Fike P/N	Description
02-9073	30° Weld Ferrule 2" Tri-Clamp 316L SST 6" (152 mm) LG
02-9341	30° Weld Ferrule 2" Tri-Clamp HC 276 x 6" (152 mm) LG
02-8598	Short Weld Ferrule 2" Tri-Clamp 316L SST x 1 ¼" (44 mm) LG
02-9395	End Cap Solid 2" Tri-Clamp



End Cap



Short Weld Ferrule

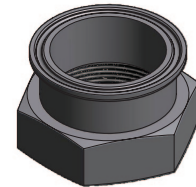


30° Weld Ferrule

Adapter:

The Tri-Clamp to NPT adapter is used with processes that have a 2" NPT pipe nipple welded to the process vessel.

Fike P/N	Description
02-9081	2" Tri-Clamp to 2" NPT Adapter 316L SST



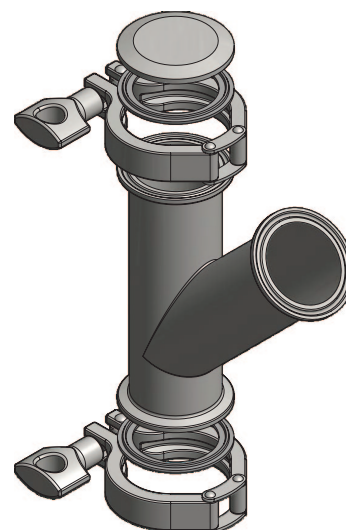
Threaded Adapter

OBSTRUCTION ACCESSORIES

Lateral “Y” Kit:

The Lateral Y kit is used when the detector is installed on a highly turbulent process.

Part Number	Description
E61-049	Lateral “Y” Kit for EP Detector with 2’ Tri-Clamp 304 SST, PTFE Gasket, 316L SST Lateral Y x 6.13” (156 mm) LG, End Cap Solid 2”

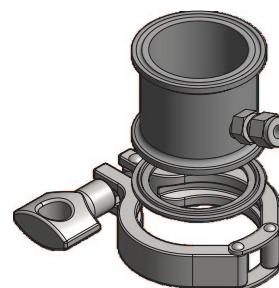


Lateral “Y”

Purge Spool Kit:

The Purge Spool Kit is used on a process vessel with product that has a tendency to conglomerate in the weld ferrule. A light flow of nitrogen or house air will help keep product from accumulating.

Part Number	Description
E61-048	Purge Spool Kit for EP Detector with 2” Tri-Clamp 304 SST, PTFE Gasket, 2” 316L SST Purge Spool x 2” (51 mm) LG



Purge Spool