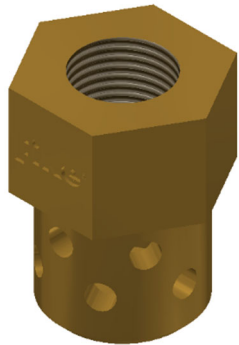
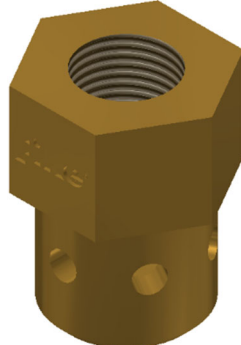


HFC-125 PRE-ENGINEERED DISCHARGE NOZZLES



180° Nozzle



360° Nozzle

Description

The pre-engineered discharge nozzles are made of brass and are available in a 180° and 360° discharge patterns. The nozzles are designed to control the agent flow and to distribute the agent throughout the protected enclosure in a uniform, predetermined pattern and concentration.

Five sizes of discharge nozzles are available, 3/8" (10 mm) through 1 1/2" (40 mm). The size refers to the size of schedule 40 or 80 pipe that the nozzle can be connected to. Each nozzle has NPT female threads for connection to the pipe network.

The nozzle size and orifice code for pre-engineered nozzles are pre-determined based on the layout of the system pipe network. Refer to the Pre-Engineered Design section of the HFC-125 Design Manual for details. Only the nozzles and corresponding orifice codes listed can be used on a Fike pre-engineered system.

Approvals

Underwriters Laboratories (UL)
 Underwriters Laboratories of Canada (ULC)
 Factory Mutual (FM)

For exact certification listings, please reference the respective agency web site.

Ordering

Part Number	Description
360° Nozzles	
80-077-1015	3/8" (10 mm) 360° nozzle
80-077-1495	3/8" (10 mm) 360° nozzle
80-077-1610	3/8" (10 mm) 360° nozzle
80-078-1935	1/2" (15 mm) 360° nozzle
80-078-2130	1/2" (15 mm) 360° nozzle
80-079-2969	3/4" (20 mm) 360° nozzle
80-080-3770	1" (25 mm) 360° nozzle
80-082-5781	1 1/2" (40 mm) 360° nozzle
180° Nozzles	
80-084-0935	3/8" (10 mm) 180° nozzle
80-084-0960	3/8" (10 mm) 180° nozzle
80-084-1405	3/8" (10 mm) 180° nozzle
80-084-1610	3/8" (10 mm) 180° nozzle
80-085-1800	1/2" (15 mm) 180° nozzle
80-085-2090	1/2" (15 mm) 180° nozzle
80-086-2770	3/4" (20 mm) 180° nozzle
80-087-3480	1" (25 mm) 180° nozzle
80-089-5312	1 1/2" (40 mm) 180° nozzle

This document is only intended to be a guideline and is not applicable to all situations. Information is subject to Fike's full disclaimer at <http://www.fike.com/disclaimer>.