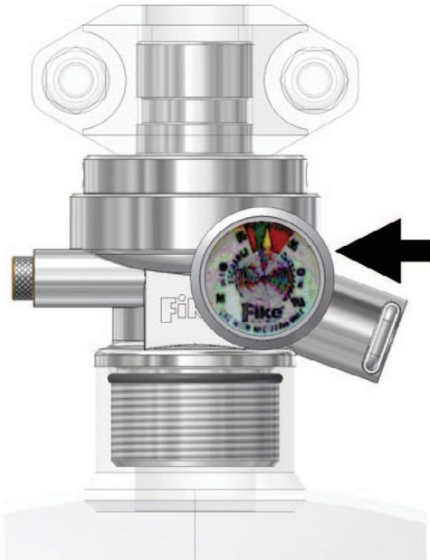
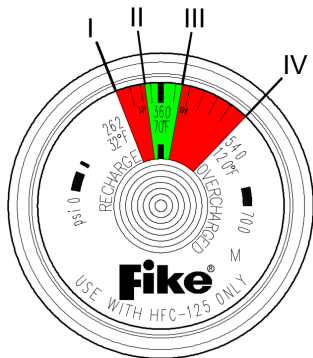


HFC-125 CONTAINER PRESSURE GAUGE



Description

The pressure gauge is mounted to each HFC-125 container to provide visual indication of the container pressure. The gauge scale is calibrated to show the actual pressure and is color-coded to show the following pressure ranges.



Gauge Color Fields:

0 to I = Recharge or below minimum storage temperature

I to II = Red

II to III = Green

III to IV = Red

IV to M = Overcharge or above maximum storage temperature

Gauge Indicating Range:

I = Pressure at minimum temperature 32°F (0°C)

II to III = Pressure from 90% to 110% of working pressure at 70°F (21°C)

IV = Pressure at maximum temperature 120°F (49°C)

The pressure gauge can be installed, removed or replaced on a charged container without removing the agent first.

Specifications

Part Number	02-10279
Pressure Connection	1/8 in. NPT
Pressure Range	0 to 700 psi (0 to 48 bar)
Type	Bourdon Tube
Diameter	1.6 inches (40 mm)
Accuracy	±4% (±14 PSI) at charge
Materials	Polycarbonate Lens
	Brass Process Connection
	Stainless Steel Case
	EPDM Rubber Gasket
	Brass Pointer

Approvals

Underwriters Laboratories (UL)

Underwriters Laboratories of Canada (ULC)

Factory Mutual (FM)

For exact certification listings, please reference the respective agency web site.

This document is only intended to be a guideline and is not applicable to all situations.

Information is subject to Fike's full disclaimer at <http://www.fike.com/disclaimer>.