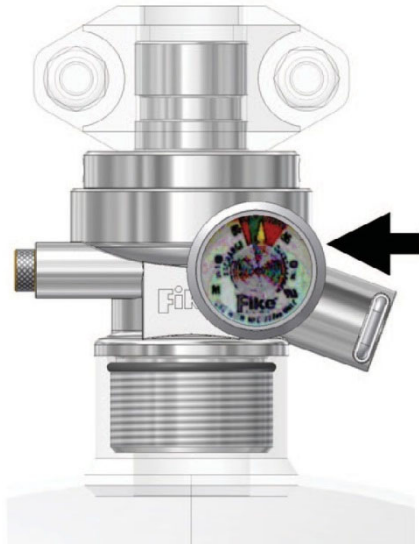
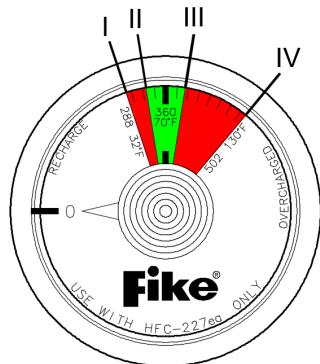


## HFC-227ea CONTAINER PRESSURE GAUGE



### Description

The pressure gauge is mounted to each HFC-227ea container to provide visual indication of the container pressure. The gauge scale is calibrated to show the actual pressure and is color-coded to show the following pressure ranges.



### Gauge Color Fields:

- 0 to I** = Recharge or below minimum storage temperature
- I to II** = Red
- II to III** = Green
- III to IV** = Red
- IV to M** = Overcharge or above maximum storage temperature

### Gauge Indicating Range:

- I** = Pressure at minimum temperature 32°F (0°C)
- II to III** = Pressure from 90% to 110% of working pressure at 70°F (21°C)
- IV** = Pressure at maximum temperature 130°F (54.4°C)

The pressure gauge can be installed, removed or replaced on a charged container without removing the agent first.

### Specifications

Part Number	02-3594
Pressure Connection	1/8 in. NPT
Pressure Range	0 to 700 psi (0 to 48 bar)
Type	Bourdon Tube
Diameter	1.6 inches (40 mm)
Accuracy	±4% (±14 PSI) at charge
Materials	Polycarbonate Lens
	Brass Process Connection
	Stainless Steel Case
	EPDM Rubber Gasket
	Brass Pointer

### Approvals

- Underwriters Laboratories (UL)
- Underwriters Laboratories of Canada (ULC)
- Factory Mutual (FM)

*For exact certification listings, please reference the respective agency web site.*

This document is only intended to be a guideline and is not applicable to all situations. Information is subject to Fike's full disclaimer at <http://www.fike.com/disclaimer>.