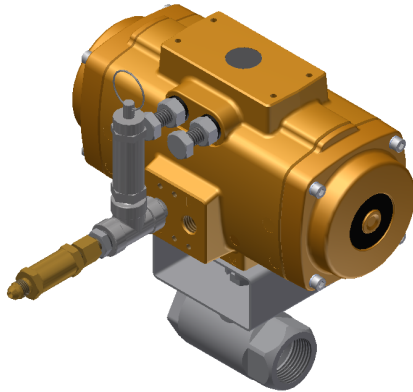


## HFC-227ea, HFC-125 AND FK-5-1-12 SELECTOR VALVES



### Description

Selector valves allow a single agent supply to be utilized for protection of multiple hazards by directing the flow of agent into one specific hazard. This reduces the total amount of agent required to protect multiple hazards. *Selector valve systems can only be used to protect one hazard at a time and will not be effective if two or more hazards are involved in a fire simultaneously.*

Selector valves are closed during normal operation, blocking the flow of agent through the piping network. A nitrogen actuator with compatible actuator must be installed and connected to each selector valve actuator via a stainless steel pilot line connection. This connection allows the pressure from the nitrogen actuator to be delivered to the selector valve actuator for valve activation. After activation, the selector valve must be manually closed (reset).

*It is extremely important that the system designer evaluate the final design concentration that will be reached in each hazard area served by the selector valve system to determine the impact on exposure limitations.*

### Approvals

Underwriters Laboratories (UL)  
Factory Mutual (FM)

### Specifications

Valve	<ul style="list-style-type: none"> <li>Standard Port Ball Valve</li> <li>NPT Threads</li> <li>Body: Carbon Steel or Stainless Steel</li> <li>Ball: Stainless Steel</li> <li>Pressure Rating: 1" (25 mm) = 2000 psi (138 bar) All others = 1500 psi (103 bar)</li> </ul>
Actuator	<ul style="list-style-type: none"> <li>Rack and Pinion Pneumatic Actuator, ¼ turn, spring return</li> <li>Pressure Rating 80 – 142 psi (5.5 – 9.8 bar)</li> <li>Factory Installed on Ball Valve</li> </ul>
Pop-Off Valve	<ul style="list-style-type: none"> <li>¼" NPT ASME Relief Valve for Air or Gas Service</li> <li>Set Pressure: 100 psi (6.9 bar)</li> <li>Relief Capacity: 92 SCFM</li> <li>Body, Nozzle, Stem and Spring Material: Stainless Steel</li> <li>Seat Material: Silicone</li> <li>Conforms to ASME Section VIII Pressure Vessel Code</li> </ul>

### Ordering

The base selector valve can be ordered separately for replacement purposes as identified in the following table.

Part Number	Description
02-15708-10	Selector Valve, Carbon Steel, 1" NPT
02-15708-15	Selector Valve, Carbon Steel, 1.5" NPT
02-15708-20	Selector Valve, Carbon Steel, 2" NPT
02-15708-30	Selector Valve, Carbon Steel, 3" NPT
02-15708-40	Selector Valve, Carbon Steel, 4" NPT
02-15709-10	Selector Valve, Stainless Steel, 1" NPT
02-15709-15	Selector Valve, Stainless Steel, 1.5" NPT
02-15709-20	Selector Valve, Stainless Steel, 2" NPT
02-15709-30	Selector Valve, Stainless Steel, 3" NPT
02-15709-40	Selector Valve, Stainless Steel, 4" NPT

This document is only intended to be a guideline and is not applicable to all situations. Information is subject to Fike's full disclaimer at <http://www.fike.com/disclaimer>.

## Selector Valve Assembly Ordering Format

The following ordering format must be used to order the selector valve as part of an assembly that includes the components required to install and activate the valve.

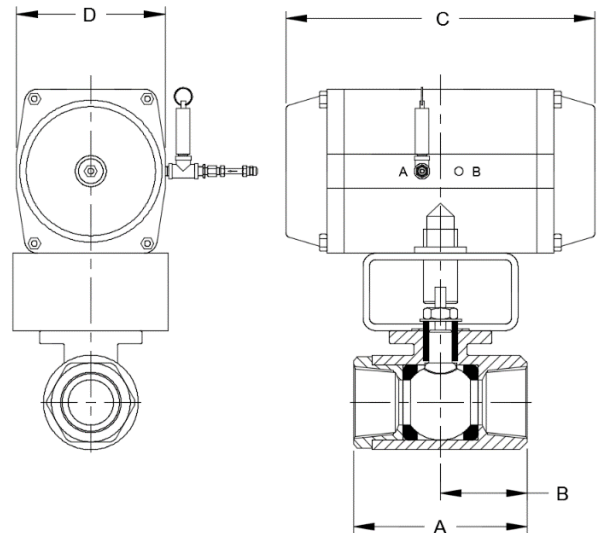
Part Number: 70-396-XX-XXX A BCD
A = 10 – 1" NPT (25 mm) 15 – 1 ½" NPT (40 mm) 20 – 2" NPT (50 mm) 30 – 3" NPT (80 mm) 40 – 4" NPT (100 mm)
B = C – Carbon Steel Body S – Stainless Steel Body
C = D – UVO Completer Kit S – Pneumatic Relay Completer Kit M – UEA Completer Kit
D = F – Nitrogen Actuator Assembly (Filled) U – Nitrogen Actuator Assembly (Unfilled)

Each selector valve assembly may include the following parts depending upon the part number ordered.

Part Number	Description	Notes
02-15708-XX-CX	Carbon Steel Selector Valve	Valve material supplied is based on selector valve assembly part number.
02-15709-XX-SX	Stainless Steel Selector Valve	
70-325-X	Nitrogen Actuator Assembly	X indicates filled (1) or unfilled (3)
70-335	Universal Valve Operator (UVO) Primary Completer Kit	Completer kit furnished is based on selector valve assembly part number.
70-336	Pneumatic Relay Secondary Completer Kit	
70-400	Universal Energetic Actuator (UEA) Primary Completer Kit	

## Dimension and Weight Information

Part Number	Size In. (mm)	Type	A	B	C	D	Wt. lb. (kg.)
			In. (mm)				
70-396-10-XXX	1 (25)	Threaded	3.37 (86)	1.68 (43)	7.55 (192)	3.74 (95)	7.8 (3.54)
70-396-15-XXX	1 ½ (40)	Threaded	4.37 (111)	2.18 (55)	8.53 (217)	4.09 (104)	11.76 (5.33)
70-396-20-XXX	2 (50)	Threaded	5.50 (140)	2.75 (70)	9.72 (247)	4.53 (115)	16.67 (7.56)
70-396-30-XXX	3 (80)	Threaded	6.75 (171)	3.37 (86)	8.80 (234)	5.00 (127)	30.10 (13.65)
70-396-40-XXX	4" (100)	Threaded	9.09 (231)	4.55 (116)	10.58 (269)	6.50 (165)	69.80 (31.66)



This document is only intended to be a guideline and is not applicable to all situations. Information is subject to Fike's full disclaimer at <http://www.fike.com/disclaimer>.