

### IMPULSE VALVE CHECK VALVES

#### Description

Check Valves are used to prevent agent loss from the open end of a manifold and/or piping system in the event that one or more containers are removed for servicing / maintenance.

Check Valves are required for multiple containers connected in a manifold arrangement and for containers used in a main / reserve system, without the need for redundant piping systems, to prevent agent loss and reduce the risk of injury if the system is operated when any containers are removed for maintenance. All containers must be the same size and same weight.

#### Approvals

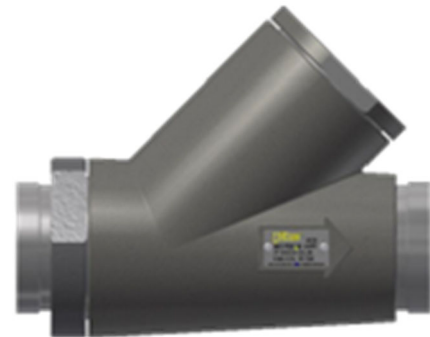
Underwriters Laboratories (UL)

Factory Mutual (FM)

*For exact certification listings, please reference the respective agency web site.*



**02-2980-1, 02-4158-1 and 70-317  
Check Valves**



**70-356 Check Valve**



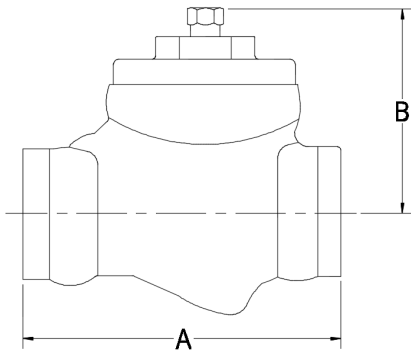
**02-16557 and 02-16558 Check Valves**

*Images are for reference only. Actual product may vary.*

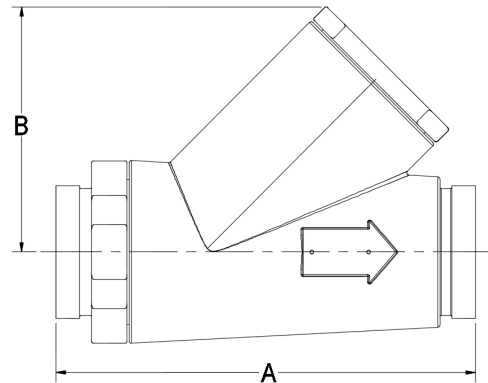
This document is only intended to be a guideline and is not applicable to all situations.  
Information is subject to Fike's full disclaimer at <http://www.fike.com/disclaimer>.

## Ordering and Specifications

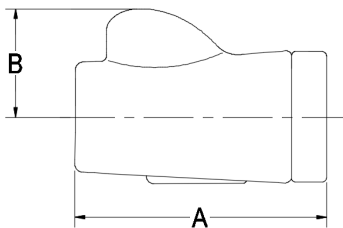
Part No.	02-2980-1	02-4158-1	70-317	02-16557	02-16558	70-356
Type	Swing Gate			Ball Check		
Size	1.0" (25 mm)	2.0" (50 mm)	3.0" (80 mm)	1.0" (25 mm)	2.0" (50 mm)	3.0" (80 mm)
Length (A)	4.3" (108 mm)	6.0" (152 mm)	8.0" (203 mm)	4.2" (106.9 mm)	6.4" (162 mm)	11.0" (281 mm)
Height (B)	3.6" (91 mm)	4.4" (111 mm)	5.8" (147 mm)	2.8" (69.9 mm)	1.8" (45.7 mm)	6.5" (165 mm)
Weight	5 lbs. (2.3 kg)	13 lbs. (5.9 kg)	28 lbs. (12.7 kg)	5 lbs. (2.3 kg)	16 lbs. (7.26 kg)	37 lbs. (16.8 kg)
Equivalent Length Sch. 40	2.0 ft. (0.61 m)	4.0 ft. (1.22 m)	4.0 ft. (1.22 m)	15.8 ft. (4.82 m)	50.0 ft. (15.24 m)	14.0 ft. (4.27 m)
Material	Carbon Steel	Carbon Steel	Ductile Iron	Carbon Steel	Carbon Steel	Ductile Iron
Threads	NPT Female	NPT Female	NPT Female	NPT Female	NPT Female	Grooved
Working Pressure	750 psi (50 bar)	750 psi (50 bar)	750 psi (50 bar)	2000 psi (138 bar)	2000 psi (138 bar)	750 psi (50 bar)
Mounting	Horizontal or Vertical (with flow arrow up)					



**02-2980-1, 02-4158-1 and 70-317 Check Valves**



**70-356 Check Valve**



**02-16557 and 02-16558 Check Valves**

This document is only intended to be a guideline and is not applicable to all situations.  
Information is subject to Fike's full disclaimer at <http://www.fike.com/disclaimer>.