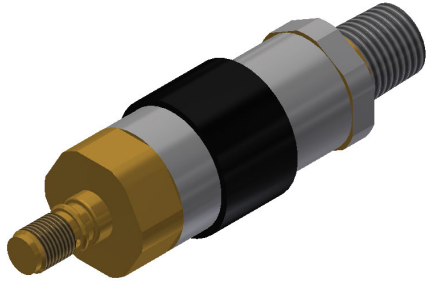


## IMPULSE VALVE LOW PRESSURE SWITCH

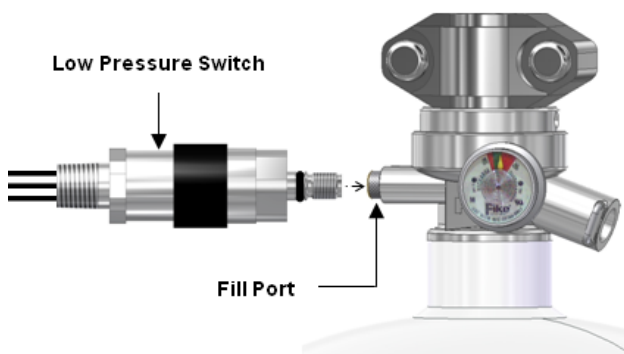


### Description

The low pressure switch (LPS) is an optional item that can be added to Impulse Valve containers for the purpose of continuously monitoring the container pressure for a low-pressure condition. If the pressure inside the container drops below 288 psig (1986 kPa), the LPS contacts will transfer and invoke a “Supervisory” indication on the control panel.

The LPS may be ordered along with a configured Impulse Valve container or as a separate item that can be installed on a fully pressurized container without loss of agent or pressure.

The switch is mounted in the fill port on the container valve.



### Specifications

Part Number	02-12533
Temperature Limits	32 to 130°F (0 to 54°C)
Enclosure Classification	NEMA 4
Contact Rating	Single pole, double throw; 5 amps resistive, 3 amps inductive @ 30 VDC (can be wired for normally open or normally closed operation)
Body Material	Aluminum with irridite finish
Pressure Connection	M10 x 1-6G, Brass
Approximate Length	4.375" (111 mm) (including both connectors)
Electrical Connection	1/2" (15 mm) NPT
Wire Leads	(3) 18 gauge x 48" (122 cm) long Violet (C), Blue (NO), Black (NC)
Pressure Setting	288 psig (20 bar), decreasing
Weight	6.5 ounces (184 g)

### Approvals

Underwriters Laboratories (UL)  
 Underwriters Laboratories of Canada (ULC)  
 Factory Mutual (FM)

*For exact certification listings, please reference the respective agency web site.*

This document is only intended to be a guideline and is not applicable to all situations. Information is subject to Fike’s full disclaimer at <http://www.fike.com/disclaimer>.