

## CO<sub>2</sub> CYLINDER RACK ASSEMBLY DOUBLE ROW

### APPROVALS:

- USCG - 162.038/12/0

### DESCRIPTION

Cylinder Rack Assemblies are designed to rigidly support CO<sub>2</sub> cylinders on multiple or main/reserve cylinder applications.

Double Row Cylinder Rack Assemblies with weigh rail are available in 4, 6, 8, 10 and 12 cylinder configurations. For applications with more than 12 cylinders, "Add-on" Cylinder Rack Assemblies are available in the same 4 through 12 cylinder configurations. This will allow any combination of cylinders to be housed in a double row rack arrangement.

All cylinders are mounted on 12" centers. Maximum height of rack: 86". See rack assembly dimensions on back page.

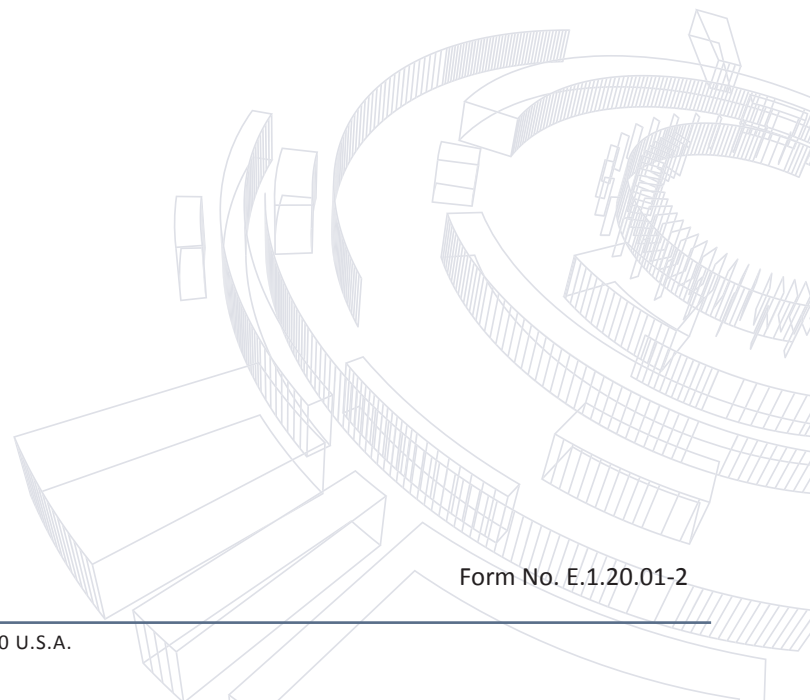
### SPECIFICATIONS

Rack: Steel Unistrut® construction with galvanized finish  
 Mounting Hardware: Steel with galvanized finish  
 Fasteners: Plated finish  
 Marine: All marine material is stainless steel

### ORDERING INFORMATION

CO <sub>2</sub> Part Number	Basic Rack Assembly
C70-040-22	4 Cylinder
C70-040-33	6 Cylinder
C70-040-44	8 Cylinder
C70-040-55	10 Cylinder
C70-040-66	12 Cylinder
CO <sub>2</sub> Part Number	Add-on Rack Assembly
C70-040-22A	4 Cylinder
C70-040-33A	6 Cylinder
C70-040-44A	8 Cylinder
C70-040-55A	10 Cylinder
C70-040-66A	12 Cylinder

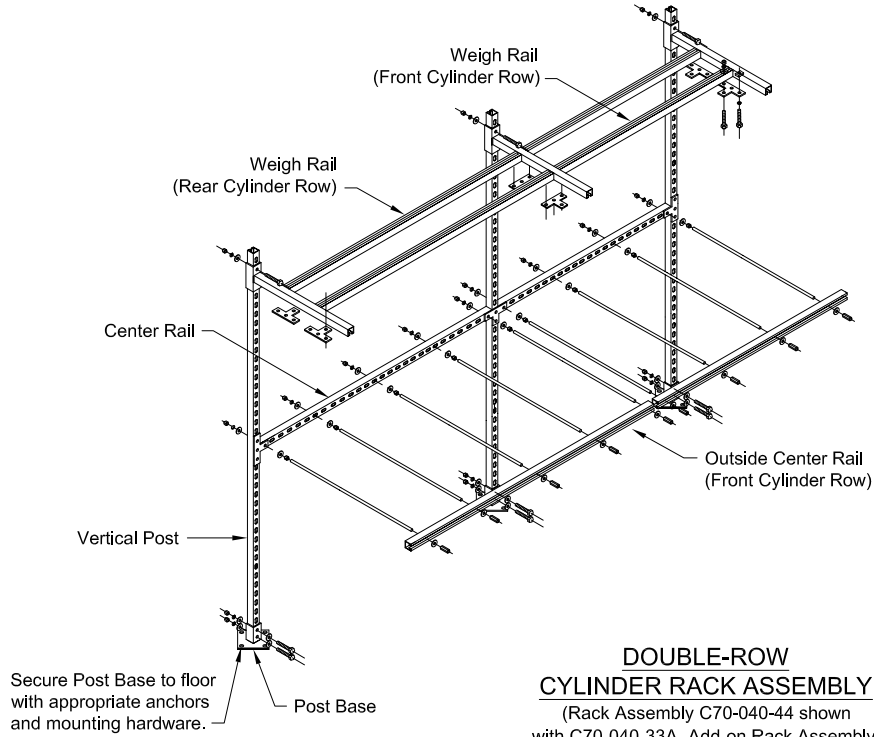
Marine Part Number	Basic Rack Assembly
C70-040-22-N	4 Cylinder
C70-040-33-N	6 Cylinder
C70-040-44-N	8 Cylinder
C70-040-55-N	10 Cylinder
C70-040-66-N	12 Cylinder
Part Number	Add-on Rack Assembly
C70-040-22A-N	4 Cylinder
C70-040-33A-N	6 Cylinder
C70-040-44A-N	8 Cylinder
C70-040-55A-N	10 Cylinder
C70-040-66A-N	12 Cylinder



Form No. E.1.20.01-2

## CYLINDER RACKING ASSEMBLY

The figure and table below illustrate the vertical height at which the center/front rails and weigh rails should be located.



Recommended Cylinder Rack Mounting Dimensions		
Cylinder Size	Dimension "A"	Dimension "B"
50 lb. (22.7 kg)	67 1/2" (1716 mm)	33" (838 mm)
75 lb. (34.0 kg)	72 1/2" (1842 mm)	38 1/2" (978 mm)
100 lb. (45.4 kg)	74 1/2" (1892 mm)	43" (1092 mm)

