

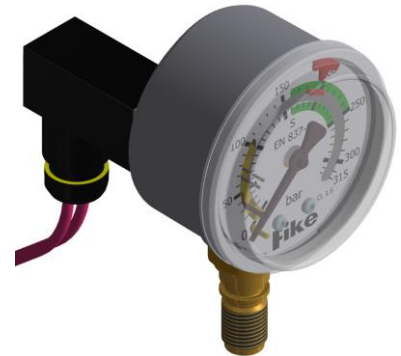
PROINERT^{®2} PRESSURE GAUGE ASSEMBLY (IG-01)

DESCRIPTION

Each Fike ProInert Cylinder is equipped with a Pressure Gauge and Switch Assembly to provide a visual pressure indication at the cylinder, as well as continuous cylinder pressure monitoring at the control panel. The pressure gauge scale is calibrated to show the actual pressure, as well as a color-coded acceptable operating range, under-pressure range, and over-pressure range.

The low pressure switch continuously monitors the container pressure for a low-pressure condition. If the pressure inside the container drops below the set pressure, the switch contacts will invoke a “supervisory” indication on the control panel.

The pressure gauge assembly is design to allow this gauge to be installed and/or removed from the ProInert cylinder without removing the agent first.



SPECIFICATIONS

Part Number	02-12561
Working Pressure	2,900psi (200bar)
Connection	Hirschmann L-Plug
Switch Settings	Normally closed Open between 2,392psi (165bar) and 2,247psi (155bar) falling
Contact Rating	5-100mA / Max Load 3W
Body Material	Stainless Steel Case Copper Alloy Connection