

PRE-ENGINEERED DUST COLLECTOR STOP/MAINTENANCE VALVES

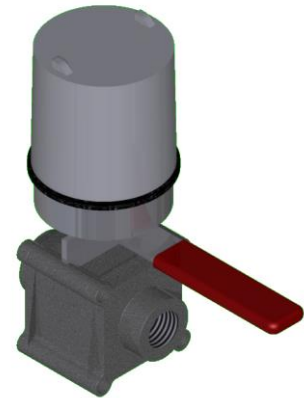
DESCRIPTION

Stop valves are used for lock-out purposes to prevent the discharge of suppression gas from the nozzles during system maintenance. The valves are equipped with a handle that can be locked in either the open or closed position for added security. Lock and key are not included.

The valve is equipped with two direct-drive micro switches which can be tied into the system control panel for the purpose of providing a trouble indication when the valve is closed. The valve is also provided with an open/closed visual indicator.

The ball valve is a high pressure valve with a stainless steel body and ball, lubetal seats and a Buna-N body seal. The valves are equipped with female NPT connections on each end for piping connections.

The two micro switches are UL listed and hazardous rated for Class I, Group C, D and Class II, Group E, F and G installations. Both micro switches are direct driven and can annunciate a trouble condition to the control panel when the valve is closed. The micro switches are rated for 5 amps @ 24 Vdc.



SPECIFICATIONS

The stop/maintenance valve provided shall be a high pressure ball valve with a lockable handle, two micro switches and position indicator. The ball valve, handle and associated hardware are made of stainless steel materials. The valve seat is made of lubetal or equal.

The micro switches are an integral part of the stop valve assembly and constructed of stainless steel and anodized aluminum materials. The micro switches are UL listed for hazardous environments Class I, Group C, D and Class II, Group E, F, G.

A visual indicator is included to indicate the valve position.

Part Number:	C02-1210 1/2" Stop Valve Assembly C02-1211 3/4" Stop Valve Assembly
Materials:	Body - 316 SST Ball - 316 SST Locking Kit - 300 SST Micro Switch Housing - Anodized Aluminum, NEMA 4, 4X
Switch Rating:	5 amps @ 24 Vdc
Pressure Rating:	5,000 psig - 1/2" and 3/4"