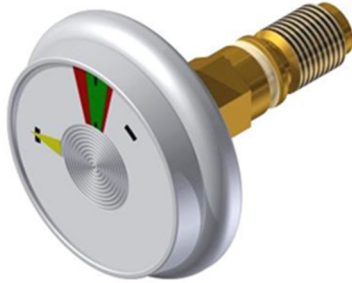


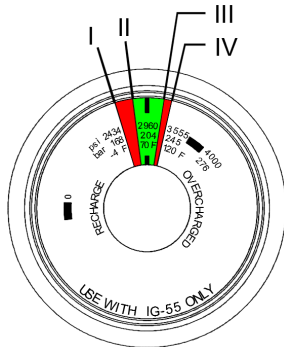
PROINERT®2 IG-55 PRESSURE GAUGE



Description

The pressure gauge is mounted to each IG-55 'Secondary' cylinder to provide visual indication of the cylinder pressure.

The gauge scale is calibrated to show the actual pressure and is color-coded to show the following pressure ranges.



Below I = Container is below the minimum operating temperature and must be recharged.

I to II (Red) = Container pressure is below 95% of normal operating pressure but container is still operable.

II to III (Green) = Container pressure is between 95% and 110% of normal operating pressure at 70°F (21°C)

III to IV (Red) = Container pressure is above 110% of normal operating pressure but container is still operable.

Over IV = Container is above the minimum operating temperature and is overcharged.

The pressure gauge can be installed, removed or replaced on a charged cylinder without removing the agent first.

Specifications

Part Number	02-13441 (200 bar)
	02-13541 (300 bar)
Temperature Limits	-4°F to +120°F (-20°C to +49°C)
Pressure Connection	M10 x 1
Pressure Range	0 to 4000 psi (0 to 276 bar)
Working Pressure	204/311 bar @ 21°C
Materials	Polycarbonate lens
	Brass Process Connection
	Stainless Steel Case
	EPDM Rubber Gasket
	Stainless Steel Bourdon Tube

Ordering Information

The pressure gauge can be ordered separately using the part numbers listed above or it can be ordered as part of the discharge valve completer kit. Refer to Data Sheet C.1.93.01.

Approvals

Underwriters Laboratories (UL)
Underwriters Laboratories of Canada (ULC)
Factory Mutual (FM)

For exact certification listings, please reference the respective agency web site.

This document is only intended to be a guideline and is not applicable to all situations. Information is subject to Fike's full disclaimer at <http://www.fike.com/disclaimer>.