

PROINERT®2 DISCHARGE PRESSURE SWITCH



Description

The discharge pressure switch is used to provide an electrical input to the control panel to indicate that the suppression system has discharged. The switch is activated by the pressure from the agent during discharge. The switch latches on operation and must be manually reset using the reset plunger prior to resetting the control panel.

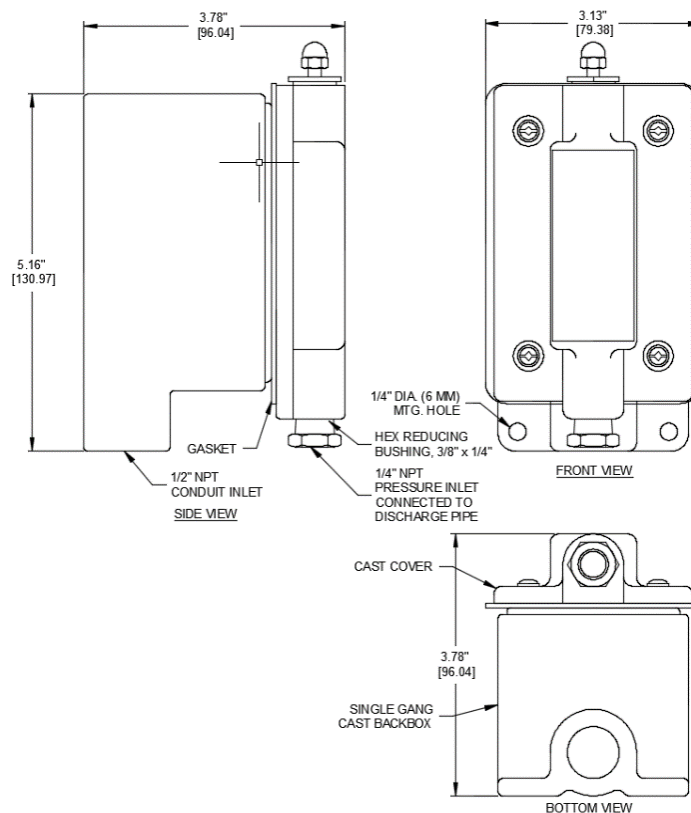
Specifications

Part Number	IG71-202
Switch	Double-pole, Single-throw
Electrical Rating	15 amps @ 120 VAC or 8 amps @ 240 VAC
Connections	1/4" NPT Female (piping network)
	1/2" NPT (conduit inlet)
Operating Pressure	100 psi (690 kPa) minimum

Approvals

Underwriters Laboratories (UL)
Underwriters Laboratories of Canada (ULC)
Factory Mutual (FM)

For exact certification listings, please reference the respective agency web site.



This document is only intended to be a guideline and is not applicable to all situations. Information is subject to Fike's full disclaimer at <http://www.fike.com/disclaimer>.