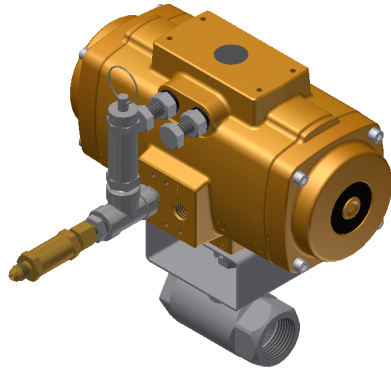


## PROINERT®2 SELECTOR VALVES



### Description

Selector valves allow a single agent supply to be utilized for protection of multiple hazards by directing the flow of agent into one specific hazard. This reduces the total amount of agent required to protect multiple hazards. *Selector valve systems can only be used to protect one hazard at a time and will not be effective if two or more hazards are involved in a fire simultaneously.*

Selector valves are closed during normal operation, blocking the flow of agent through the piping network. A release fitting and compatible actuator must be installed in the distribution piping network adjacent to the valve. These components allow the agent discharge pressure from the distribution piping network to be diverted to the selector valve actuator through a pneumatic hose for valve activation. After activation, the selector valve must be manually closed (reset).

*It is extremely important that the system designer evaluate the final design concentration that will be reached in each hazard area served by the selector valve system to determine the impact on exposure limitations.*

### Approvals

Underwriters Laboratories (UL)  
Factory Mutual (FM)

### Specifications

Valve	<ul style="list-style-type: none"> <li>▪ Standard Port Ball Valve</li> <li>▪ NPT Threads</li> <li>▪ Body: Carbon Steel or Stainless Steel</li> <li>▪ Ball: Stainless Steel</li> <li>▪ Pressure Rating: 1" (25 mm) = 2000 psi (138 bar) All others = 1500 psi (103 bar)</li> </ul>
Actuator	<ul style="list-style-type: none"> <li>▪ Rack and Pinion Pneumatic Actuator, ¼ turn, double-acting</li> <li>▪ Pressure Rating 80 – 142 psi (5.5 – 9.8 bar)</li> <li>▪ Factory Installed on Ball Valve</li> </ul>
Pop-Off Valve	<ul style="list-style-type: none"> <li>▪ ¼" NPT ASME Relief Valve for Air or Gas Service</li> <li>▪ Set Pressure: 100 psi (6.9 bar)</li> <li>▪ Relief Capacity: 92 SCFM</li> <li>▪ Body, Nozzle, Stem and Spring Material: Stainless Steel</li> <li>▪ Seat Material: Silicone</li> <li>▪ Conforms to ASME Section VIII Pressure Vessel Code</li> </ul>

### Ordering

The base selector valve can be ordered separately for replacement purposes as identified in the following table.

Part Number	Description
02-15708-10	Selector Valve, Carbon Steel, 1" NPT
02-15708-15	Selector Valve, Carbon Steel, 1.5" NPT
02-15708-20	Selector Valve, Carbon Steel, 2" NPT
02-15708-30	Selector Valve, Carbon Steel, 3" NPT
02-15709-10	Selector Valve, Stainless Steel, 1" NPT
02-15709-15	Selector Valve, Stainless Steel, 1.5" NPT
02-15709-20	Selector Valve, Stainless Steel, 2" NPT
02-15709-30	Selector Valve, Stainless Steel, 3" NPT

This document is only intended to be a guideline and is not applicable to all situations. Information is subject to Fike's full disclaimer at <http://www.fike.com/disclaimer>.

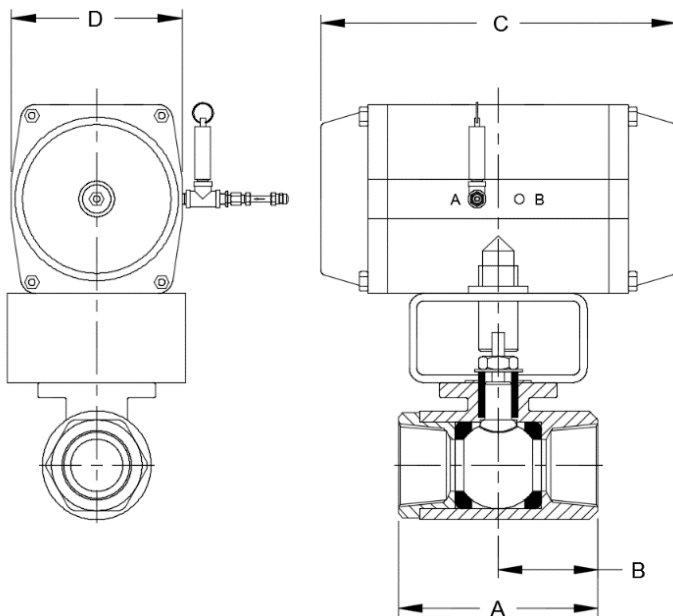
## Selector Valve Assembly Ordering Format

The following ordering format must be used to order the selector valve as part of an assembly that includes the components required to install and activate the valve.

Part Number: 70-395-XX-XX
A BC
A = 10 – 1" NPT (25 mm) 15 – 1 ½" NPT (40 mm) 20 – 2" NPT (50 mm) 30 – 3" NPT (80 mm)
B = C – Carbon Steel Body S – Stainless Steel Body
C = D – Release Fitting with UVO Completer Kit S – Release Fitting with Pneumatic Relay Completer Kit M – Release Fitting with UEA Completer Kit

## Dimension and Weight Information

Part Number	Size In. (mm)	Type	A	B	C	D	Wt. lb. (kg.)
			In. (mm)				
70-395-10-XX	1 (25)	Threaded	3.37 (86)	1.68 (43)	7.95 (202)	3.34 (85)	7.8 (3.54)
70-395-15-XX	1 ½ (40)	Threaded	4.37 (111)	2.18 (55)	9.05 (230)	3.85 (98)	11.76 (5.33)
70-395-20-XX	2 (50)	Threaded	5.50 (140)	2.75 (70)	10.66 (271)	4.33 (110)	16.67 (7.56)
70-395-30-XX	3 (80)	Threaded	6.75 (171)	3.37 (86)	14.17 (360)	5.51 (140)	30.10 (13.65)



This document is only intended to be a guideline and is not applicable to all situations.  
Information is subject to Fike's full disclaimer at <http://www.fike.com/disclaimer>.