

## IMPULSE VALVE CHECK VALVES

### Description

Check Valves are used to prevent agent loss from the open end of a manifold and/or piping system in the event that one or more containers are removed for servicing / maintenance.

Check Valves are required for multiple containers connected in a manifold arrangement and for containers used in a main / reserve system, without the need for redundant piping systems, to prevent agent loss and reduce the risk of injury if the system is operated when any containers are removed for maintenance. All containers must be the same size & same weight.

### Specifications

Part No.	02-2980-1	02-4158-1	70-317	70-356
Size	1" (25 mm)	2" (50 mm)	3" (80 mm)	3" (80 mm)
Height	3.75" (95 mm)	4.5" (144 mm)	6" (152 mm)	6.5" (165 mm)
Length	4.25" (108 mm)	6" (152 mm)	8" (203 mm)	11" (281 mm)
Weight*	9 lbs. (4.1 kg)	12 lbs. (5.4 kg)	31 lbs. (14.1 kg)	37 lbs. (16.8 kg)
Equivalent Length	2.0 ft. (0.61 m)	4.0 ft. (1.22 m)	4.0 ft. (1.22 m)	14.0 ft. (4.27 m)
Material	Carbon Steel		Ductile Iron	
Threads	FNPT			
Working Pressure	750 psi (50 bar)			
Mounting	Horizontal or Vertical (with flow arrow up)			

\*Approximate



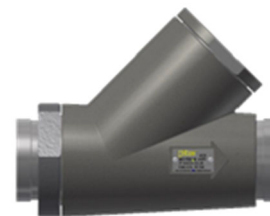
1" (25 mm) Check Valve



2" (50 mm) Check Valve



3" (80 mm) Check Valve



3" (80 mm) Ball Check Valve

*Images are for reference only. Actual product may vary.*

### Approvals

Underwriters Laboratories (UL)  
Underwriters Laboratories of Canada (ULC)  
Factory Mutual (FM)

*For exact certification listings, please reference the respective agency web site.*

This document is only intended to be a guideline and is not applicable to all situations. Information is subject to Fike's full disclaimer at <http://www.fike.com/disclaimer>.