

## PRESSURE SWITCH (POTTER)



### Description

The Potter Pressure Actuated Switch is equipped with a ½" NPT male pressure connection that can be connected to the discharge side of the DuraQuench™ deluge valve or to the alarm port outlet of an approved deluge valve to provide waterflow detection in the system due to manual activation of the valve's trim. The pressure switch will actuate when the alarm line pressure reaches 4 - 8 PSI (0.27 - 0.55 BAR).

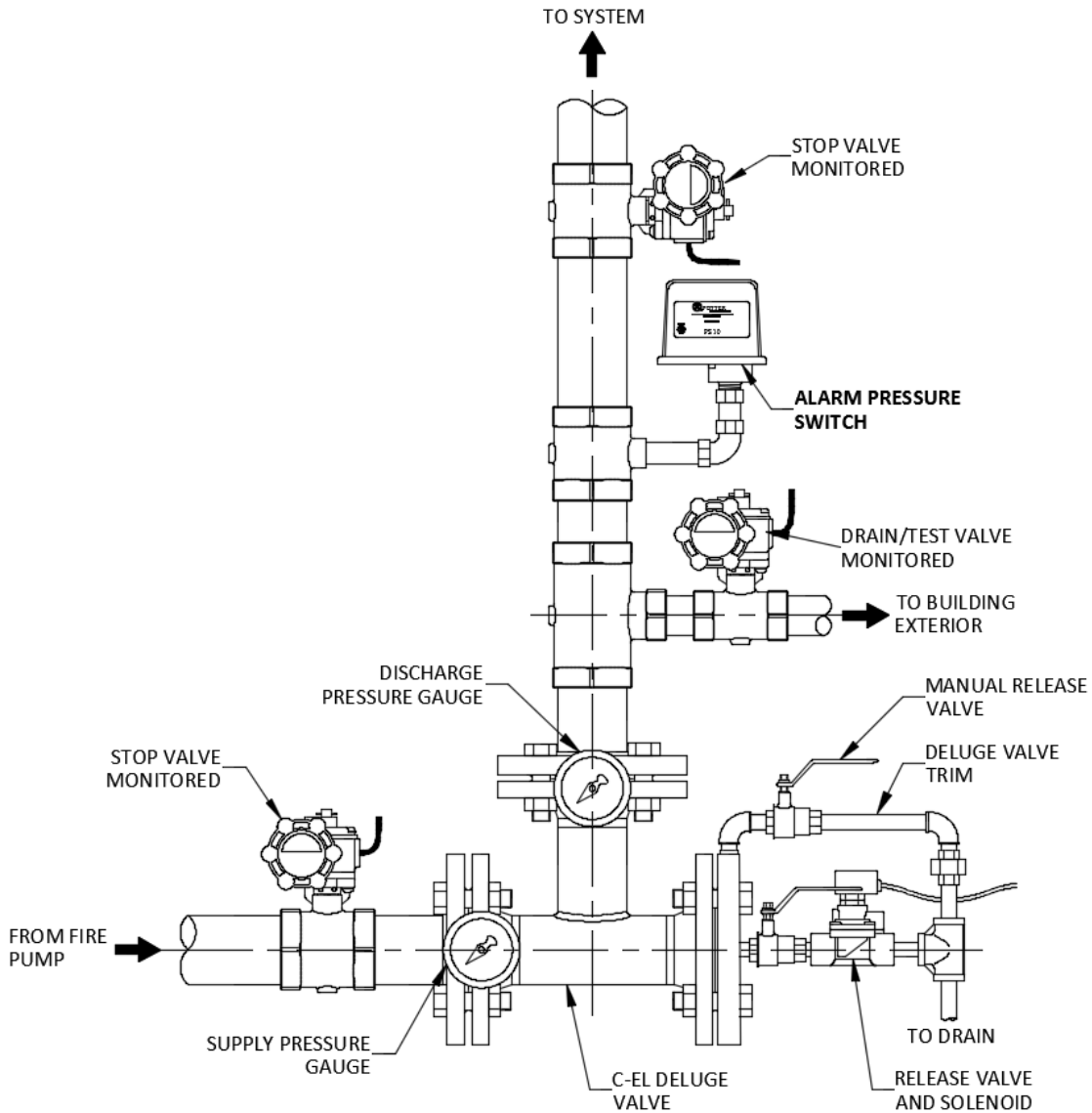
The SPDT contacts within the switch can be used to signal a waterflow condition to a listed fire alarm control panel for activation of the DuraQuench pump skid and alarm notification.

### Specifications

Fike Part Number	02-15245
Dimensions	3.78" (W) x 3.20" (D) x 4.22" (H) 96 mm (W) x 81 mm (D) x 107 mm (H)
Enclosure	Cover – Die-cast w/ textured red powder coat finish, single cover screw & rain lip
	Base – Die-cast
Pressure Connection	Nylon 1/2" NPT male
Factory Adjustment	4 – 8 psi (0.28 – 0.55 bar)
Differential	2 psi (0.14 bar)
Maximum System Pressure	300 psi (20.68 bar)
Contact Ratings (One set of SPDT (Form C))	10.1 Amps at 125/250 VAC
	2.0 Amps at 30 VDC resistive
	10 mA min. at 24 VDC
Conduit Entrances	Two knockouts provided for 1/2" conduit
Enclosure Rating	NEMA 4 / IP66 (indoor or outdoor)
Temperature Range	-40°F - 140°F (-40°C - 60°C)
Listing / Approval	FM Approved UL ULC & CSFM Listed LPC Approved NYMEA Accepted

This document is only intended to be a guideline and is not applicable to all situations. Information is subject to Fike's full disclaimer at <http://www.fike.com/disclaimer>.

## Typical Application



**Typical DuraQuench C-EL Valve Installation**

This document is only intended to be a guideline and is not applicable to all situations. Information is subject to Fike's full disclaimer at <http://www.fike.com/disclaimer>.