

UNION TYPE AND HAMMER UNION TYPE RUPTURE DISC HOLDERS

UNION TYPE DESCRIPTION

The typical Union Type Rupture Disc Holder is a three-piece unit consisting of a base flange (inlet), a holddown flange (outlet) and a union nut. The 30° angular seating surfaces of these holders are machined to grip Conventional Pre-bulged P/CPV Series and HO/HOV Series Rupture Discs. The base and holddown flanges grip the rupture disc while the union nut provides the compression necessary to create a metal-to-metal seal. (See Figure 1)

Fike's Union Type Rupture Disc Holders can be incorporated into a pressure system by welded or threaded connections, or any combination of the two. Standard Union Type Disc Holder dimensions and configurations, with assembly letter designations are displayed in Table 1.

Carbon Steel and 316 SST are standard materials of construction for Union Type Holders. However, other materials are available upon request and their dimensions may vary. When ordering Union Type Rupture Disc Holders, it is necessary to specify size, pressure rating, assembly letters (BU, CU, EU or FU) and material requirements. Rupture discs are ordered separately and must be specified as Union Type with size, material, rupture pressure and operating temperature. Threaded base and holddowns are supplied with standard pipe size NPT threads.



FIGURE 1

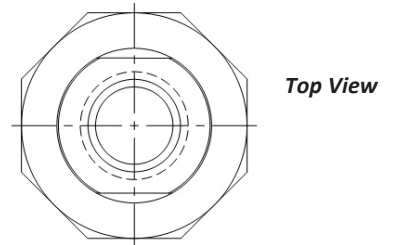
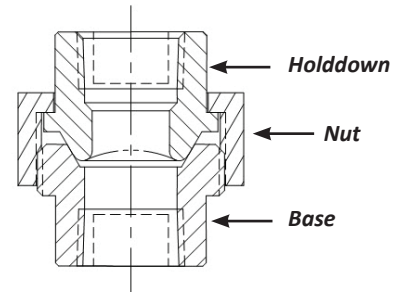


TABLE 1
STANDARD UNION TYPE HOLDER DIMENSIONS, CONFIGURATIONS, AND ASSEMBLY LETTER DESIGNATIONS

Pipe Size (IN)	Max. Rating at 100°F	**Seating Lip Designation	Flats	Approximate Height (IN)			
				BU	CU	EU	FU
				Threaded Base Threaded Holddown	Threaded Base Welding Holddown	Welding Base Threaded Holddown	Welding Base Welding Holddown
1/2	3000 PSIG	LL	1 3/4	* 2 3/8	2 1/4	2 3/8	2 1/4
1/2	6000 PSIG	HL	2 1/2	* 2 5/8	2 5/8	2 5/8	2 5/8
3/4	3000 PSIG	LL	2 1/2	* 2 3/4	2 1/2	2 7/8	2 5/8
3/4	6000 PSIG	LL	2 3/16	2 1/4	2 1/2	2 7/8	2 5/8
1	3000 PSIG	LL	2 9/16	* 2 1/2	3 1/16	3 3/8	3 5/16
1	6000 PSIG	LL	3	* 3 1/8	3 1/1	3 3/8	3 5/16
1 1/2	3000 PSIG	LL	3 7/16	* 3 7/16	3 1/8	3 1/2	3 3/8
2	750 PSIG	LL	5	3 7/16	3 7/16	3 5/8	3 5/8

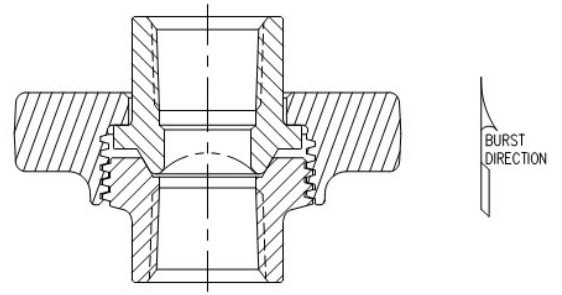
* Stocked UT Holders (Stocked materials: CS & SST. 1/2" size SST stock only.)

** LL- Light Lip, HL- Heavy Lip
ASME UD available with P Series or HO/HOV Series rupture discs.
Consult factory for more information.

HAMMER UNION TYPE DESCRIPTION

The typical Hammer Union Holder, sometimes referred to as a Wing Nut Union Holder, is a three-piece unit consisting of a base (inlet), a holddown (outlet) and a wing nut. The 30° angular seating surfaces of these holders provide the compression necessary to clamp the rupture disc securely into place. This design is ideal for installation locations that are hard to reach allowing easier dismantling of the unit and can withstand the force of a hammer for optimum field use.

Carbon Steel is the standard material of construction for the Hammer Union Type Holder. Standard Hammer Union Type Holder dimensions and configurations are displayed in Table 2. Fike Hammer Unions are supplied with standard pipe size NPT threads.



**TABLE 2
STANDARD HAMMER UNION TYPE DIMENSIONS AND CONFIGURATIONS**

Fike P/N	Pipe Size (IN)	Assembly Rating	Approx. Height (IN)
1 60HU	1	6000	3 3/32
1.50 60HU	1 1/2	6000	3 9/32
2 20HU	2	2000	3 15/16

