

Warning

- Read these instructions carefully and completely before attempting to unpack, install or service the PAD.
- Do not vent the PAD to an area where it would endanger personnel.
- Install the PAD in such a way that equipment in the area will not prevent the rupture disc from opening or be damaged by system discharge.
- Do not touch, poke or scratch the rupture disc.

Materials

- PAD-A, PAD-IBP, PAD-I, High Pressure PAD-A or High Pressure PAD-I
- 1/4 hex key
- O-ring

Inspection/Preparation

- Carefully remove the PAD from the packaging container.
- Verify the part number, burst pressure, temperature and burst direction.
- Inspect the rupture disc for damage.
- Look for dents, scratches or dings in the dome of the rupture disc and o-ring groove.
- If foreign material is present, carefully clean the PAD with petroleum based solvent and air dry.
- The o-ring is supplied by others.
- The o-ring material should be based on pressure, temperature and media.
- The recommended o-ring size, material and durometer are 2-013, Viton, 90D.

Installation

- Reference Figure 1 for o-ring installation on the PAD.
- Reference Figure 2 for the PAD hole dimensions.
- Thread the PAD in to the tapped hole using a 1/4 hex key and torque to a maximum of 120 in-lb.

Removal

- Remove the burst PAD using a 1/4 hex key.
- Dispose of the burst PAD.
- Clean the tapped hole before installing a new PAD.

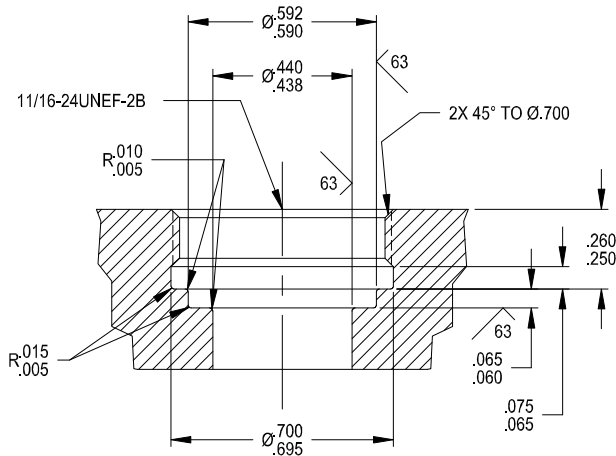
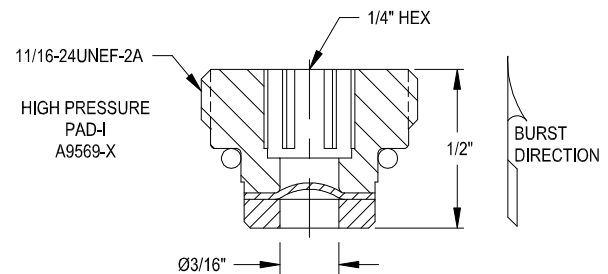
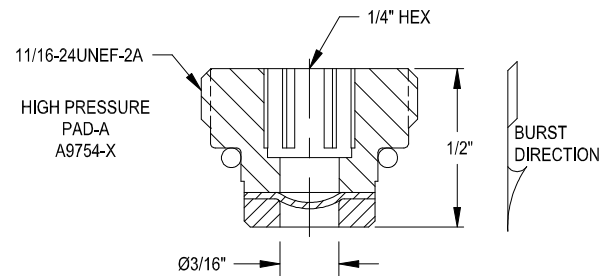
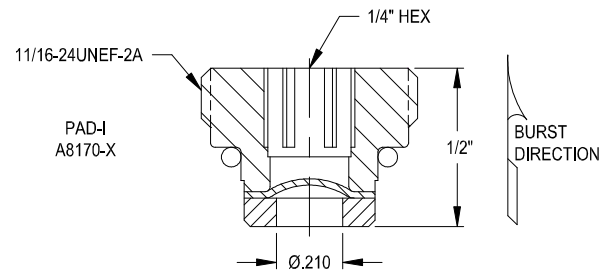
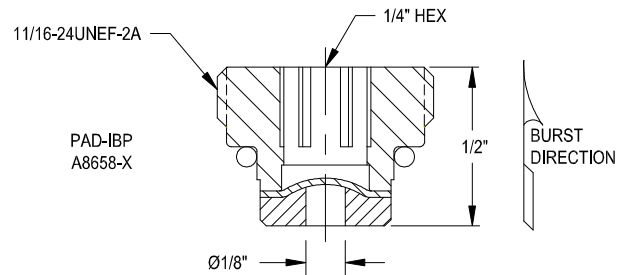
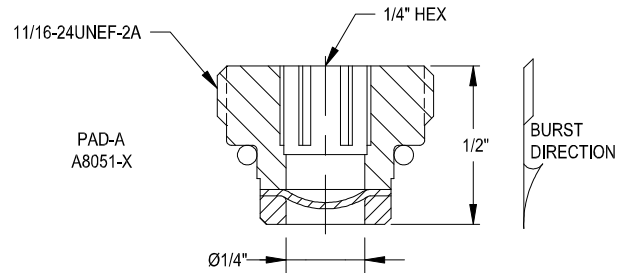


FIGURE 2: PAD PORT DETAIL

FIGURE 1: PAD ASSEMBLY