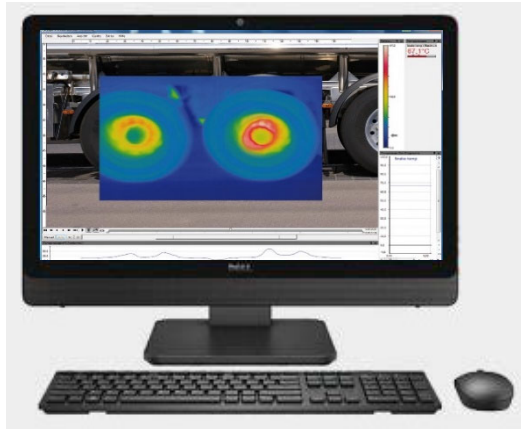


Thermal Video Management System



Thermal Video Management Workstation

Description

The Thermal Video Management System is a 1TB desktop network video recorder (NVR) preloaded with the PIX Connect IR analysis software. The software set benchmarks within the thermography branch by offering its users extensive recording and real-time analysis options. The software can measure moving objects via line scan function.

Ordering Information

Part Number	Description
28-0063	Thermal Video Management System (capable of monitoring six cameras maximum)

Computer Specifications

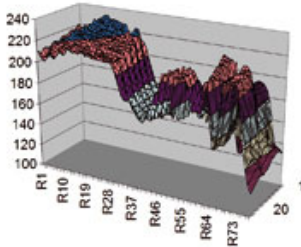
Operating System	Windows® 10 Home
Processor	6 th generation Intel® Core™ i3-6100T, Dual-Core, 3.20GHz
Cache	3MB Cache
Memory	8GB DDR3L-1600 SDRAM, (expandable to 16GB)
Hard Drive	1TB 7200RPM SATA
Optical Drive(s)	Ultra Slim-tray SuperMulti DVD Burner
Video Graphics	Intel® HD Graphics 530
Network Interface	10/100/1000 Base-T Network
Wireless Connectivity	Wireless LAN 802.11a/b/n/ac (1x1) and Bluetooth® 4.0 M.2 combo
Sound	Integrated Speakers
Memory Slots	2 DDR3L DIMM (SO-DIMM) (occupied)
Expansion Slots	1 M.2 (available)
Memory Card Reader	HP 3-in-1, Supports SD, SDHC, SDXC
External Ports	<ul style="list-style-type: none"> - Headphone/Microphone combo - HDMI Out - Rear I/O: 4 USB 2.0 - Bottom: 2 USB 3.0 (1 supports charging)
Mouse and Keyboard	Black and white wireless keyboard and mouse
Web Camera	Intel® RealSense™ Camera (1920x1080, 2MP), with integrated microphone; infrared (640x480) camera
Integrated Display	10-point touch-enabled 23-inch diagonal widescreen IPS FHD LED backlit display (1920x1080) full HD
Power Supply	120W Power Supply (external)
Dimensions	22.35 in (L) x 7.60 in (W) x 17.74 in (H) approx. (unpackaged)
Weight	17.75 lb. approx. (unpackaged)

This document is only intended to be a guideline and is not applicable to all situations. Information is subject to Fike's full disclaimer at <http://www.fike.com/disclaimer>.

Software Advantages

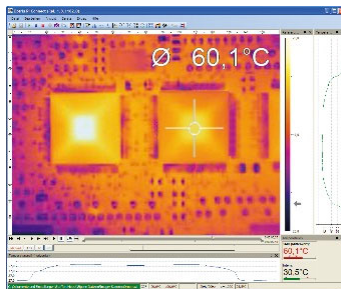
- No restrictions in licensing
- Remote control of camera via software
- Modern software with intuitive user interface
- Display of multiple images in different windows
- Compatible with Windows® 7, 8, and 10

Analysis and Documentation Temperature Data



- Triggered data collection
- Radiometric video sequences (*.ravi, *.wmv)
- Radiometric snap shots (*.tiff)
- Text files including complete temperature information for analysis in Excel (*.csv)
- Data with color information for standard programs such as Photoshop or Windows Media Player (*.tiff, *.bmp, *.jpg, *.png)
- Data transfer in real time to other software programs via DLL or comport interfaces

Automatic Process and Quality Control



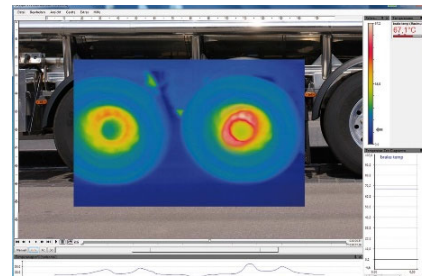
- Individual setup of alarm levels depending on the process
- BI-SPECTRAL process monitoring (IR and VIS) for easy orientation at point of measurement
- Definition of visual or acoustic alarms and analog data output via the process interface
- Analog and digital signal input (process parameter)
- External communication of software via reference values
- Corrections of thermal image using referential values

High Level of Customization



- Different layout options for an individual setup (arrangement of windows, toolbar)
- Temperature display in °C or °F
- Various language options including a translation tool
- Range of individual measurement parameters appropriate for each application
- Adaption of thermal image (mirror, rotate)
- Individual start options (full screen, hidden, etc.)

Video Recording and Snap Shot Function



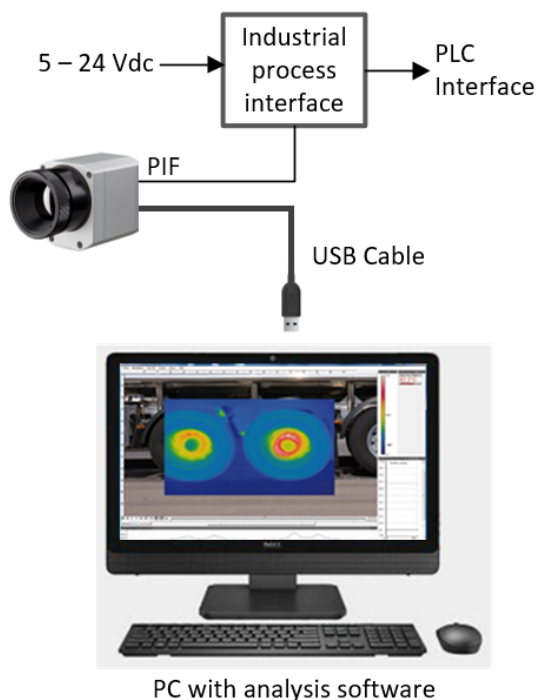
- Recording of video sequences and detailed frames for further analysis or documentation
- BI-SPECTRAL video analysis (IR and VIS) in order to highlight critical temperatures
- Adjustments of recording frequency to reduce data volume
- Display of snap shot history for immediate analysis

Extensive Online and Offline Data Analysis

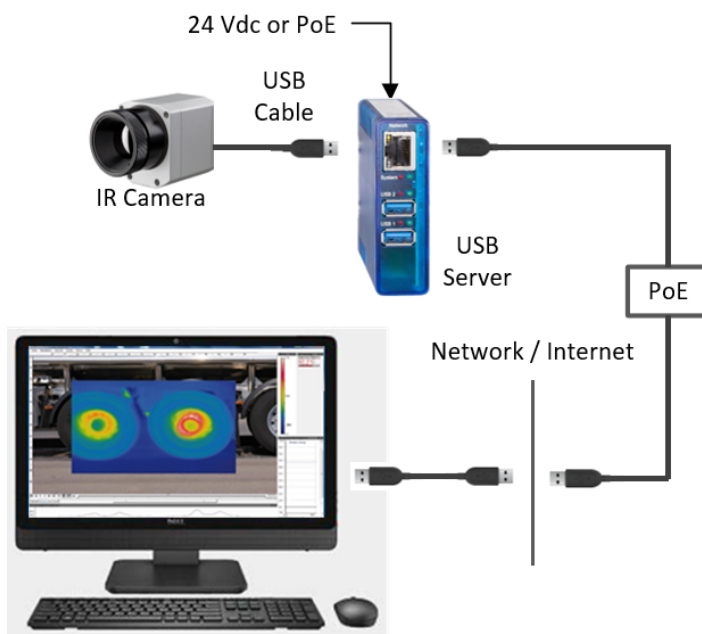
- Real-time temperature information within main window as digital or graphic display
- Analysis supported by measurement fields, automatic hot and cold spot detection
- Logic operation of temperature information (measurement fields and image subtraction)
- Slow motion repeat of radiometric files and analysis without camera being connected
- Editing of sequences such as cutting and saving of individual images
- Various color palettes to highlight thermal contrasts

This document is only intended to be a guideline and is not applicable to all situations.
Information is subject to Fike's full disclaimer at <http://www.fike.com/disclaimer>.

System Integration



Single Camera USB Direct Connection



Multiple Camera Network Connection

This document is only intended to be a guideline and is not applicable to all situations.
Information is subject to Fike's full disclaimer at <http://www.fike.com/disclaimer>.