

### IMPULSE STORAGE CONTAINERS USING 3M™ NOVEC™ 1230 FIRE PROTECTION FLUID



#### Description

Fike's clean agent containers are painted steel containers available in various sizes and varying fill densities. Each container is supplied with an internal syphon tube, Fike Impulse Valve assembly, pressure gauge, container nameplate and applicable mounting hardware. Refer to page 3 for illustration of items supplied with the container.

The Impulse Valve contains a fast-acting rupture disc that retains the agent within the container until the disc is ruptured by an Impulse Valve Actuator (ordered separately) allowing the agent to be released from the container.

Each container is factory filled with 3M™ Novec™ 1230 fire protection fluid in 0.5 kg increments up to its required capacity and is then super-pressurized with dry nitrogen to 34.5 bar at 21°C. Fill density must be specified when ordering. Containers sharing the same manifold must be equal in size and fill density.

#### Specifications

Fill Range	481 to 1121 kg/m <sup>3</sup>
Fill Increments	0.5 kg
Super - Pressurization Level	34.5 bar at 21°C after filling with dry nitrogen
Storage Temp Limits*	0°C minimum 54.4°C maximum
Construction	Carbon steel alloys
Rating	π marked to TPED Designed to EN 13322-1
Color Options	red (default) or white
Actuation Methods	Electric/Pneumatic/Manual

\* If container pressure reaches 49.6 to 55 bar, valve will open automatically.

#### Reliability

Each container is manufactured in strict accordance to EN 13322-1 and π marked to TPED. Each container is leak tested and pressure tested prior to shipment.

#### Approvals

Loss Prevention Certification Board (LPCB)

*For exact certification listings, please reference the respective agency web site.*

This document is only intended to be a guideline and is not applicable to all situations. Information is subject to Fike's full disclaimer at <http://www.fike.com/disclaimer>.

## Container Data

Container		Fill Range		Tare Weight	Dimensions (approximate)		Valve Size
Size (L)	Base P/N	Minimum (kg)	Maximum (kg)		Diameter (mm)	Height (mm)	
5	70-377-R-NA-NV	2.5	5.5	11	178	414	1 (25)
9	70-378- R-NA-NV	4.5	10.0	13	178	609	1 (25)
16	70-379- R-NA-NV	8.0	17.5	16	229	635	1 (25)
26	70-380- R-NA-NV	12.5	29.5	23	229	876	1 (25)
45	70-381- R-NA-NV	22.0	50.0	35	324	816	1 (25)
83	70-382- R-NA-NV	40.0	93.0	62	324	1316	3 (80)
150	70-383- R-NA-NV	72.5	168.0	82	406	1483	3 (80)

FLOOR LOADING / AREA BY CONTAINER SIZE					
Container Size	Total Container Weight *	Container Floor Area	Container Floor Loading	Container Floor Area w/Plate **	Container Floor Loading w/Plate ***
L	kg	m <sup>2</sup>	kg/m <sup>2</sup>	m <sup>2</sup>	kg/m <sup>2</sup>
5	16.5	0.025	660	0.36	75
9	23.0	0.025	920	0.36	93
16	33.5	0.041	818	0.36	122
26	52.0	0.041	1269	0.36	173
45	85.0	0.082	1037	0.36	265
83	155.0	0.082	1891	0.36	459
150	250.0	0.129	1938	0.36	723

**Notes:**

\* Total container weight is based on container tare weight + maximum fill weight

\*\* Plate size = 6.4mm x 0.6m x 0.6m

\*\*\* Total container weight 10.2 kg added for plate used to calculate container with plate floor loading

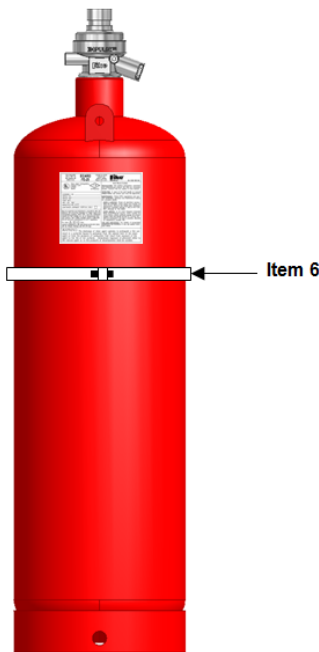
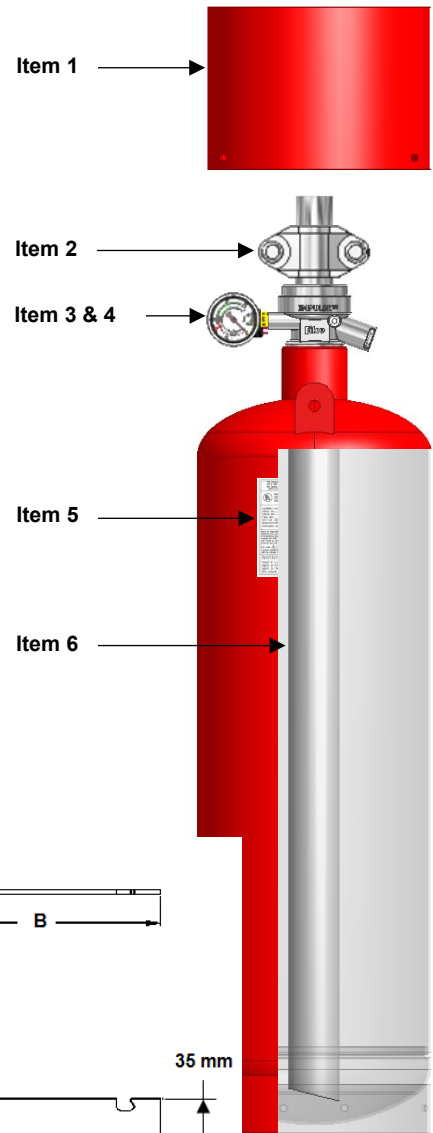
This document is only intended to be a guideline and is not applicable to all situations. Information is subject to Fike's full disclaimer at <http://www.fike.com/disclaimer>.

## Items Supplied with Container Assembly

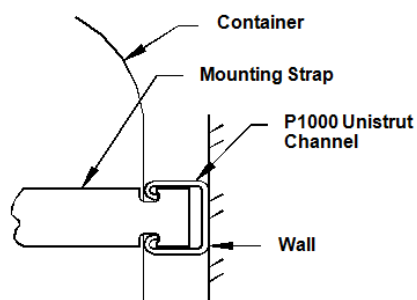
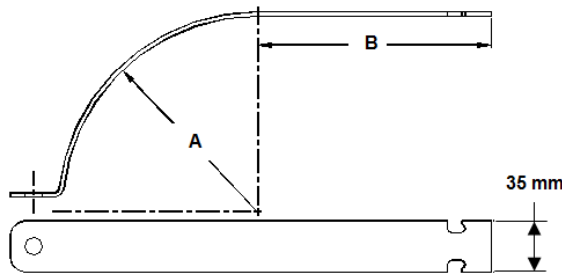
Item No.	Description	Data Sheet
1	Shroud	n/a
2	Grooved Coupling & Adaptor Nipple	n/a
3	Impulse Valve	26-1753
4	Pressure Gauge with Low Pressure Switch	26-1754
5	Nameplate <sup>1</sup>	n/a
6	Siphon Tube <sup>2</sup>	n/a
7	Mounting Straps & Brackets	26-1747

### Notes:

- 1) Fike nameplate provides the information that is specific to each container: Assembly and serial number of the container, weight information: tare, gross and agent and installation, operation and safety information.
- 2) All Fike Clean Agent containers are equipped with a siphon tube. All containers must be mounted upright (valve up).



Front View – Container & Mounting Strap



This document is only intended to be a guideline and is not applicable to all situations. Information is subject to Fike's full disclaimer at <http://www.fike.com/disclaimer>.